

## INSPECTION

### 1. CHECK FLUID LEVEL

- Keep the vehicle level.
- With the engine stopped, check the fluid level in the oil reservoir.

If necessary, add fluid.

**Fluid: ATF DEXRON® II or III**

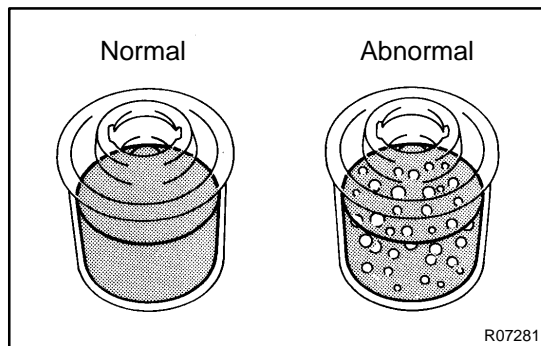
#### HINT:

Check that the fluid level is within the HOT LEVEL range on the reservoir cap dipstick.

If the fluid is cold, check that it is within the COLD LEVEL range.

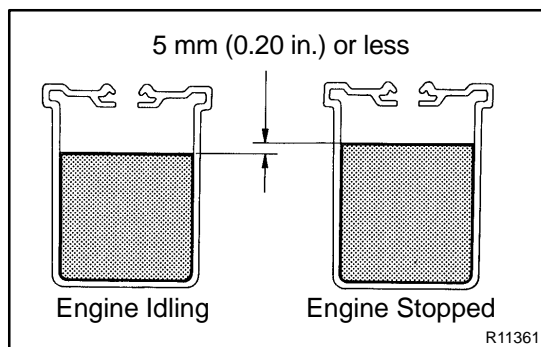
- Start the engine and run it at idle.
- Turn the steering wheel from lock to lock several times to boost fluid temperature.

**Fluid temperature: 80°C (176°F)**



- Check for foaming or emulsification.

If there is foaming or emulsification, bleed power steering system. (See page [SR-3](#))



- With the engine idling, measure the fluid level in the oil reservoir.

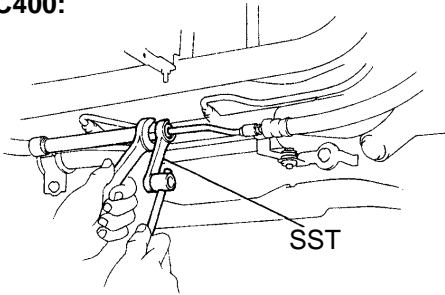
- Stop the engine.

- Wait a few minutes and remeasure the fluid level in the oil reservoir.

**Maximum fluid level rise: 5 mm (0.20 in.)**

If a problem is found, bleed power steering system (See page [SR-3](#)).

- Check the fluid level.

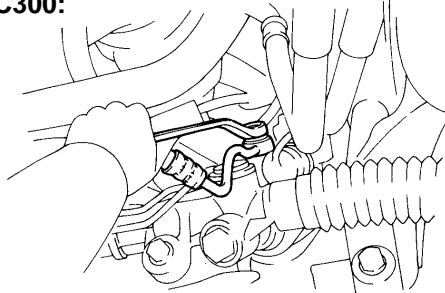
**SC400:**

F04513

**2. CHECK STEERING FLUID PRESSURE****(a) SC400:**

Using SST, disconnect the pressure feed tube.

SST 09631-22020

**SC300:**

F04514

**(b) SC300:**

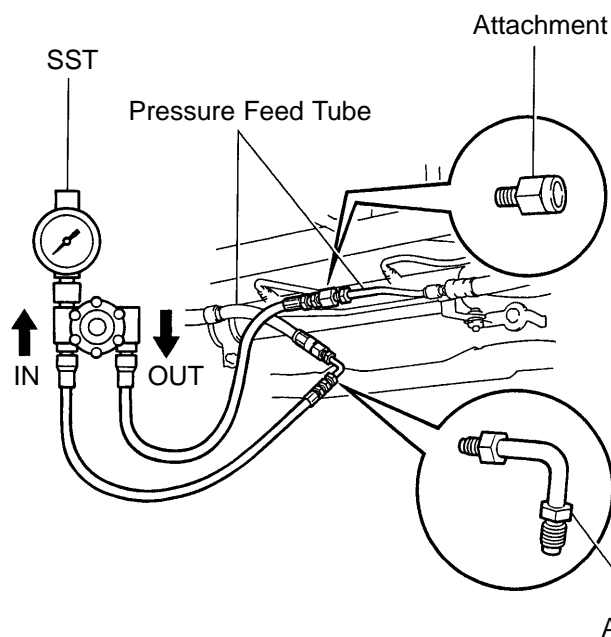
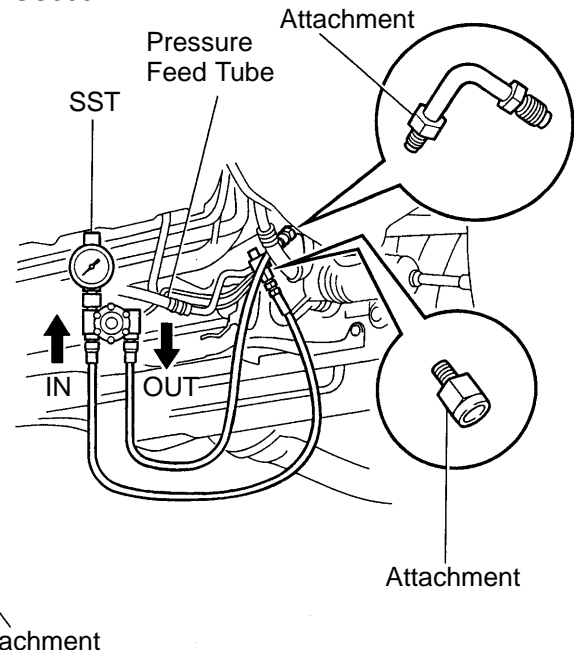
Remove the union bolt and disconnect the pressure tube from the PS gear.

**(c) Connect SST as shown in the illustration below.**

SST 09640-10010 (09641-01010, 09641-01030, 09641-01060)

**NOTICE:**

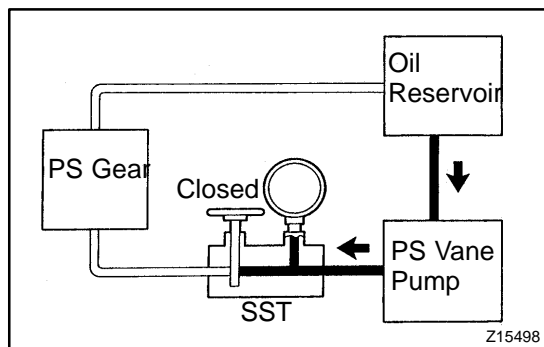
**Check that the valve of the SST is in the open position.**

**SC400:****SC300:**

W03497

- (d) Bleed the power steering system (See page [SR-3](#)).
- (e) Start the engine and run it at idle.
- (f) Turn the steering wheel from lock to lock several times to boost fluid temperature.

**Fluid temperature: 80 °C (176 °F)**



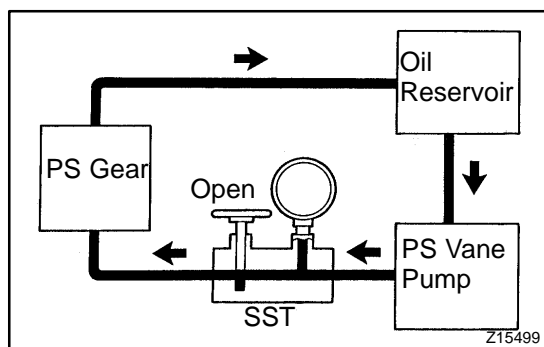
- (g) With the engine idling, close the valve of the SST and observe the reading on the SST.

**Minimum fluid pressure:**

**7,355 kPa (75 kgf/cm<sup>2</sup>, 1,067 psi)**

**NOTICE:**

- Do not keep the valve closed for more than 10 seconds.
- Do not let the fluid temperature become too high.



- (h) With the engine idling, open the valve fully.

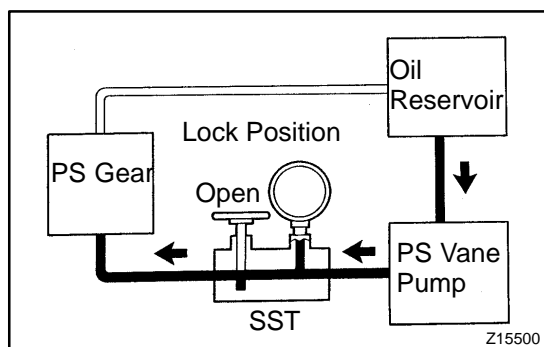
- (i) Measure the fluid pressure at engine speeds of 1,000 rpm and 3,000 rpm.

**Difference fluid pressure:**

**490 kPa (5 kgf/cm<sup>2</sup>, 71 psi) or less**

**NOTICE:**

**Do not turn the steering wheel.**



- (j) With the engine idling and valve fully opened, turn the steering wheel to full lock.

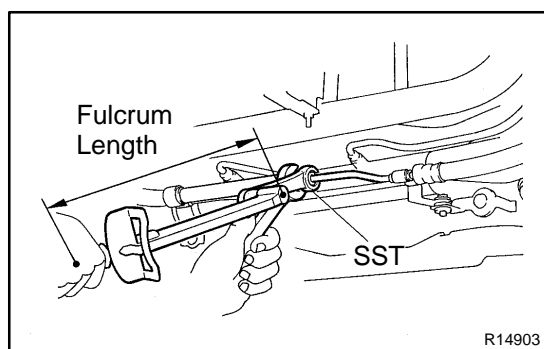
**Minimum fluid pressure:**

**7,355 kPa (75 kgf/cm<sup>2</sup>, 1,067 psi)**

**NOTICE:**

- Do not maintain lock position for more than 10 seconds.
- Do not let the fluid temperature become too high.

- (k) Disconnect the SST.



- (l) SC400:

Using SST, connect the pressure tube.

SST 09631-22020

**Torque: 36 N·m (365 kgf·cm, 26 ft·lbf)**

**HINT:**

- Use a torque wrench with a fulcrum length of 300 mm (11.81 in.).
- This torque value is effective in case that SST is parallel to a torque wrench.

- (m) SC300:

Connect the pressure tube with a new gasket, and torque the union bolt.

**Torque: 49 N·m (500 kgf·cm, 36 ft·lbf)**

- (n) Bleed the power steering system.

(See page [SR-3](#))