

REASSEMBLY

1. INSTALL BEARING

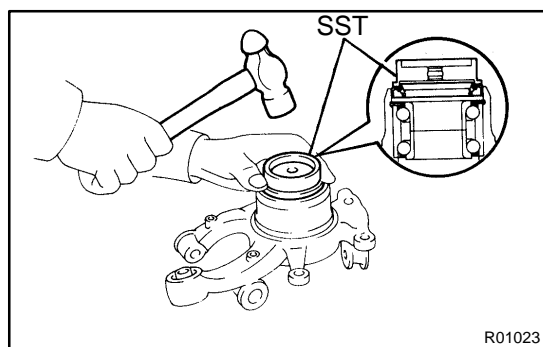
- (a) Using SST and a press, install the bearing to the axle carrier.

SST 09309-36010, 09608-32010

NOTICE:

If the inner races come loose from the bearing outer race, be sure to install them on the same side as before.

- (b) Using snap ring pliers, install a new snap ring.

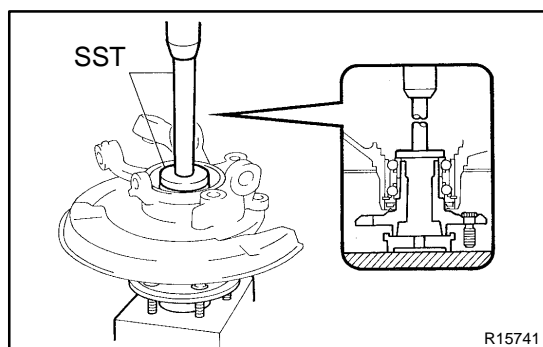


2. INSTALL OIL SEAL (OUTSIDE)

- (a) Install the inner race (outside).
 (b) Using SST and a hammer, install a new oil seal.
 SST 09608-32010
 (c) Apply MP grease to the oil seal lip.

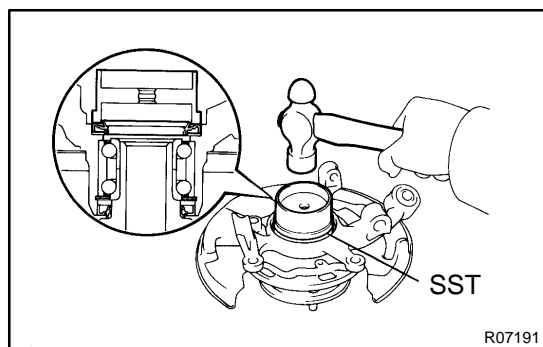
NOTICE:

Be careful not to damage the oil seal.



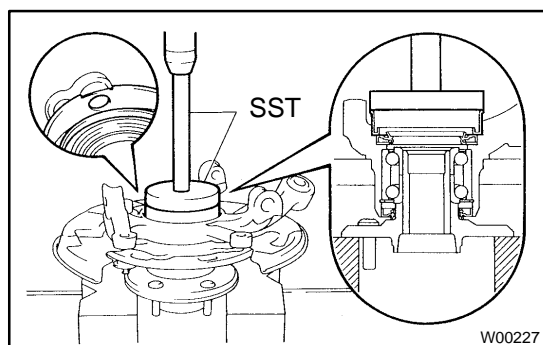
3. INSTALL AXLE HUB

- (a) Temporarily install the backing plate.
 (b) Install the inner race (inside).
 (c) Using SST and a press, install the axle hub.
 SST 09608-32010, 09950-60010 (09951-00560),
 09950-70010 (09951-07150)



4. INSTALL OIL SEAL (INSIDE)

- (a) Using SST and a hammer, install a new oil seal.
 SST 09223-15020
 (b) Apply MP grease to the oil seal lip.



5. INSTALL DUST DEFLECTOR

Using SST and a press, install a new dust deflector.

SST 09950-60020 (09951-01030),
 09950-70010 (09951-07150)

HINT:

Align the holes for the ABS speed sensor in the dust deflector and carrier.