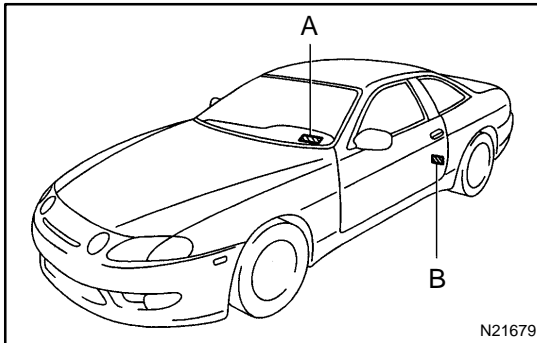


# IDENTIFICATION INFORMATION

## VEHICLE IDENTIFICATION AND ENGINE SERIAL NUMBER

IN05L-01



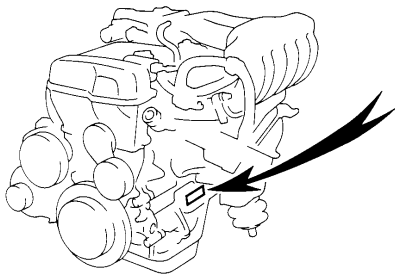
### 1. VEHICLE IDENTIFICATION NUMBER

The vehicle identification number is stamped on the vehicle identification number plate and certification label.

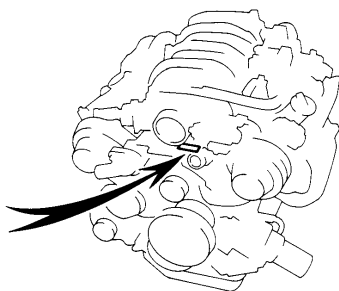
A: Vehicle Identification Number Plate

B: Certification Label

### 2JZ-GE Engine



### 1UZ-FE Engine



B01548

### 2. ENGINE SERIAL NUMBER

The engine serial number is stamped on the engine block, as shown in the illustration.