

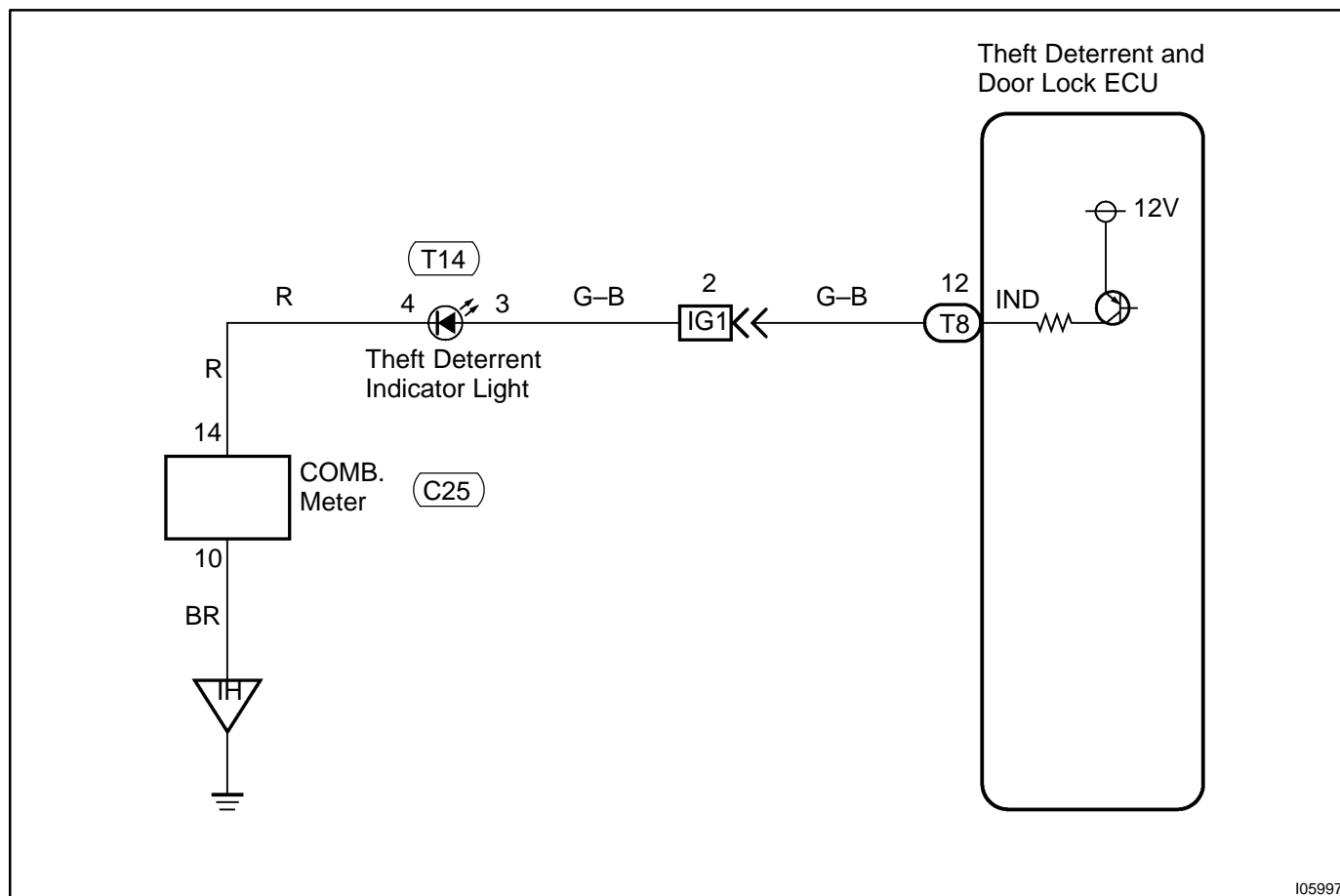
CIRCUIT INSPECTION

Indicator Light Circuit

CIRCUIT DESCRIPTION

When the theft deterrent system is preparing to set, this circuit light up the indicator light. When the system has been set, it continually turns the indicator light on for 1 second and turns it off for 1 seconds, thus blinking the indicator light.

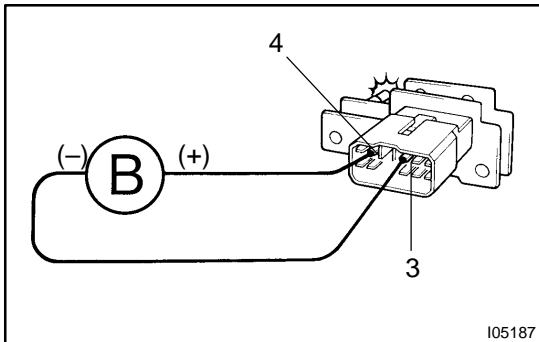
WIRING DIAGRAM



I05997

INSPECTION PROCEDURE

1 Check indicator light.

**PREPARATION:**

- (a) Remove combination meter cluster (See page [BO-95](#) for removal and installation).
- (b) Disconnect indicator light connector.

CHECK:

Connect positive \oplus lead to terminal 4 and negative \ominus lead to terminal 3 of indicator light connector.

OK:

Indicator light comes on.

NG

Replace indicator light.

OK

2 Check harness and connector between ECU and indicator light, indicator light and body ground (See page [IN-29](#)).

NG

Repair or replace harness or connector.

OK

Check and replace ECU. *1

*1: When there is a malfunction that the theft deterrent system cannot be set, proceed to the next numbered circuit inspection shown on matrix chart (See page DI-730).