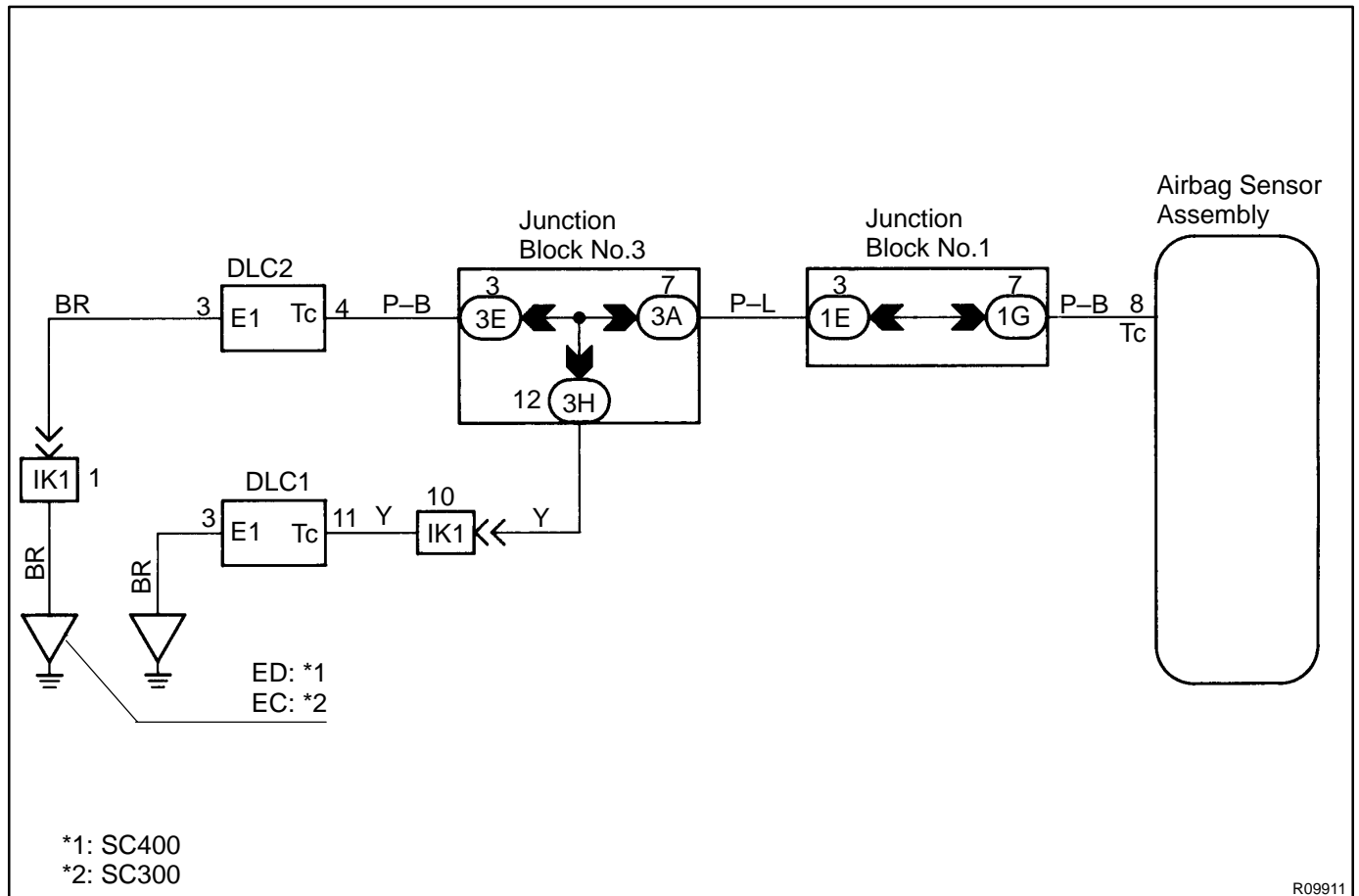


Tc Terminal Circuit

CIRCUIT DESCRIPTION

By connecting terminals Tc and E₁ of the DLC1 the airbag sensor assembly is set in the DTC output mode. The DTCs are displayed by the blinking of the SRS warning light.

WIRING DIAGRAM

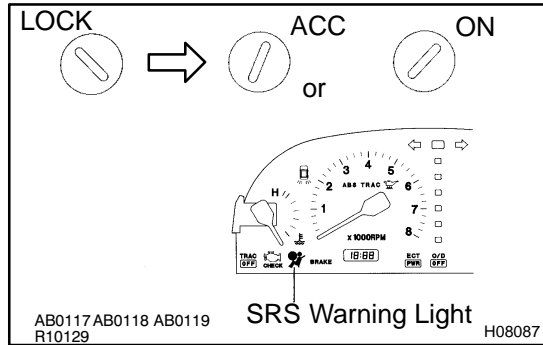


INSPECTION PROCEDURES

HINT:

If the DTC is not displayed, perform the following troubleshooting.

1 Does SRS warning light light up for approx. 6 seconds?



CHECK:

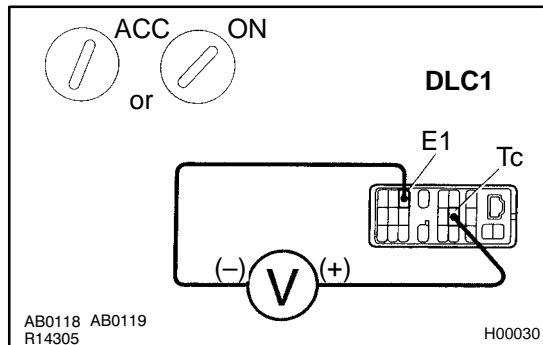
Check operation of SRS warning light after ignition switch is turned from LOCK position to ACC or ON position.

NO

Check SRS warning lights system
(See page [DI-540](#)).

YES

2 Check voltage between terminals Tc and E₁ of DLC1.



PREPARATION:

Turn ignition switch to ACC or ON.

CHECK:

Measure voltage between terminals Tc and E₁ of DLC1.

OK:

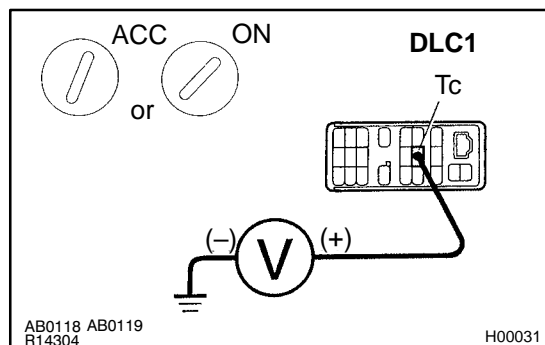
Voltage: 10 – 14 V

OK

Go to step 4.

NG

3 Check voltage between terminal Tc of DLC1 and body ground.

**CHECK:**

Measure voltage between terminals Tc of DLC1 and body ground.

OK:

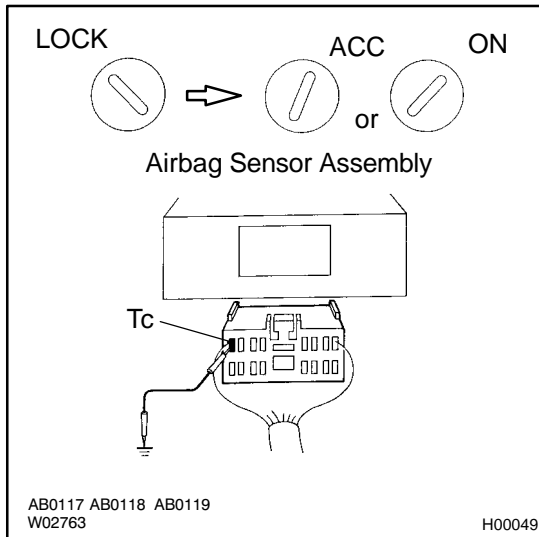
Voltage: 10 – 14 V

OK

Check harness between terminal E₁ of DLC1 and body ground.

NG

4 Check airbag sensor assembly.



PREPARATION:

- Turn ignition switch to LOCK.
- Disconnect negative (–) terminal cable from the battery, and wait at least 90 seconds.
- Remove steering wheel pad.
- Disconnect connector of front passenger airbag assembly.
- Disconnect airbag sensor assembly connector.
- Insert service wire into terminal Tc from back side as shown.
- Connect airbag sensor assembly connector with service wire.
- Connect negative (–) terminal cable to battery.
- Turn ignition switch to ACC or ON and wait at least 20 seconds.
- Connect service wire of terminal Tc to body ground.

CHECK:

Check operating of SRS warning light.

OK:

SRS warning light comes on.

NOTICE:

Never make a mistake with the terminal connection position as this will cause a malfunction.

OK

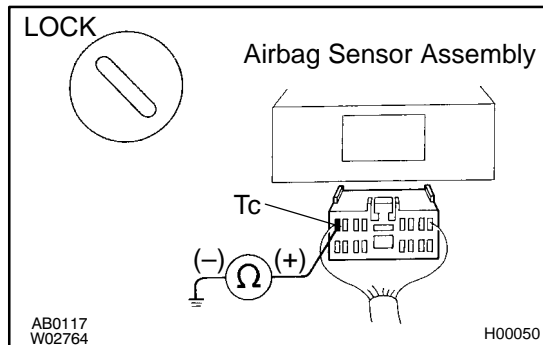
Check harness between airbag sensor assembly and DLC1.

NG

Replace airbag sensor assembly.

If the DTC is displayed without a DTC check procedure, do the following troubleshooting.

- | | |
|----------|--|
| 1 | Check resistance between terminal Tc of airbag sensor assembly and body ground. |
|----------|--|



PREPARATION:

- (a) Turn ignition switch to LOCK.
- (b) Disconnect negative (-) terminal cable from the battery, and wait at least 90 seconds.
- (c) Remove steering wheel pad.
- (d) Disconnect connector of front passenger airbag assembly.
- (e) Disconnect airbag sensor assembly connector.

CHECK:

Check resistance between terminal Tc of airbag sensor assembly connector and body ground.

OK:

Resistance: 1 MΩ or higher

NG

Repair or replace harness or connector.

OK

Replace airbag sensor assembly.