

## CIRCUIT INSPECTION

DI48R-01

DTC	Normal	Source Voltage Drop
-----	--------	---------------------

## CIRCUIT DESCRIPTION

The SRS is equipped with a voltage-increase circuit (DC-DC converter) in the airbag sensor assembly in case the source voltage drops.

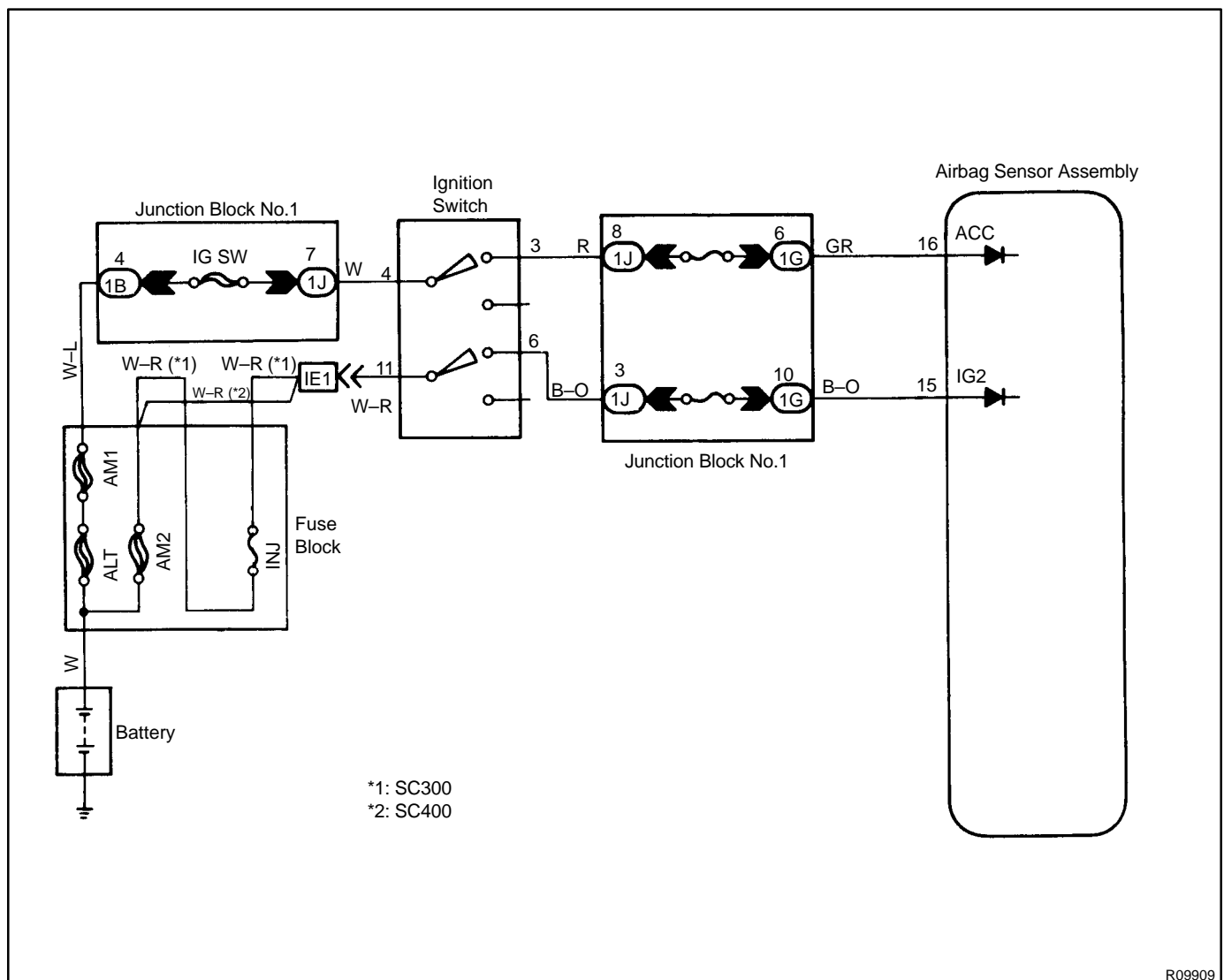
When the battery voltage drops, the voltage-increase circuit (DC-DC converter) functions to increase the voltage of the SRS to normal voltage.

The diagnostic system malfunction display for this circuit is different to other circuits—when the SRS warning light remains lit up and the DTC is a normal code, source voltage drop is indicated.

Malfunction in this circuit is not recorded in the airbag sensor assembly, and the source voltage returns to normal, the SRS warning light automatically goes off.

DTC No.	DTC Detecting Condition	Trouble Area
Normal	Source voltage drop.	<ul style="list-style-type: none"> <li>• Battery</li> <li>• Airbag sensor assembly</li> </ul>

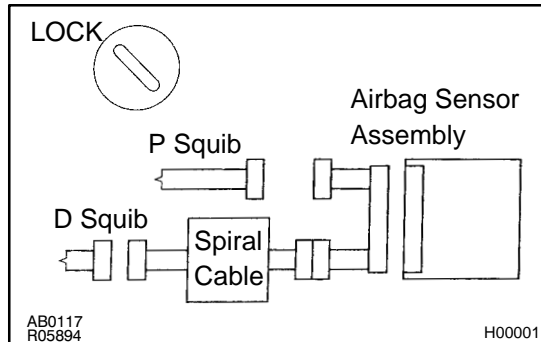
## WIRING DIAGRAM



R09909

## INSPECTION PROCEDURES

### 1 Preparation.

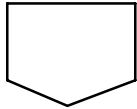


#### **PREPARATION:**

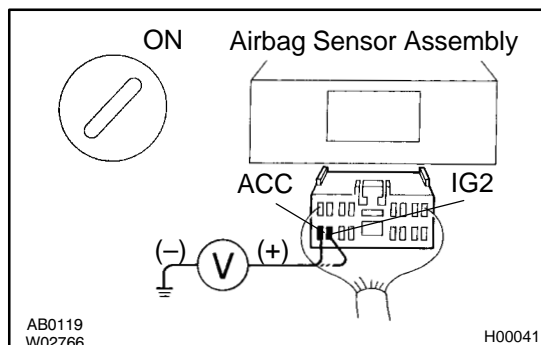
- Disconnect negative (–) terminal cable from the battery, and wait at least 90 seconds.
- Remove steering wheel pad (See page [SR-11](#)).
- Disconnect connector of front passenger airbag assembly (See page [RS-21](#)).
- Disconnect connector of airbag sensor assembly (See page [RS-33](#)).

#### **CAUTION:**

Store the steering wheel pad with the front surface facing upward.



### 2 Check source voltage.



#### **PREPARATION:**

- Connect negative (–) terminal cable to battery.
- Turn ignition switch ON.

#### **CHECK:**

Measure voltage at IG2 or ACC on sensor and operate electric system. (defogger, wiper, headlight, heater blower, etc.)

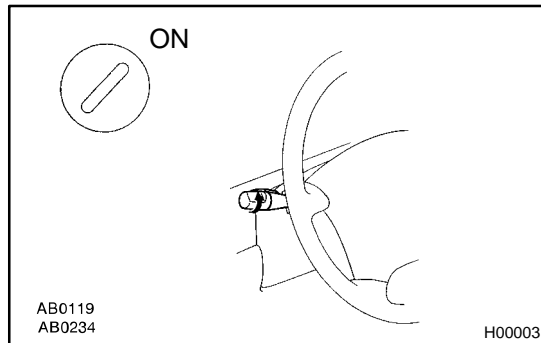
#### **OK:**

**Voltage: 10 – 14 V**

**NG**

Check the harness between battery and airbag sensor assembly, and check the battery and charging system.

**OK**

**3 Does SRS warning light turn off?****PREPARATION:**

- (a) Turn ignition switch to LOCK.
- (b) Connect steering wheel pad connector.
- (c) Connect front passenger airbag assembly connector.
- (d) Connect airbag sensor assembly connector.
- (e) Turn ignition switch ON.

**CHECK:**

Operate electric system (defogger, wiper, headlight, heater blower, etc.) and check that SRS warning light goes off.

**NO**

**Check for DTCs. If a DTC is output, trouble-shooting for the DTC. If a normal code is output, replace airbag sensor assembly.**

**YES**

**From the results of the above inspection, the malfunctioning part can now be considered normal. To make sure of this, use the simulation method to check.**