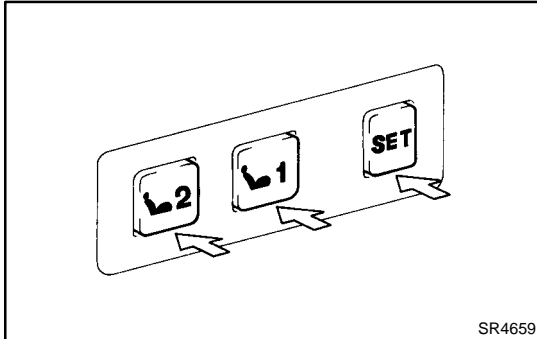


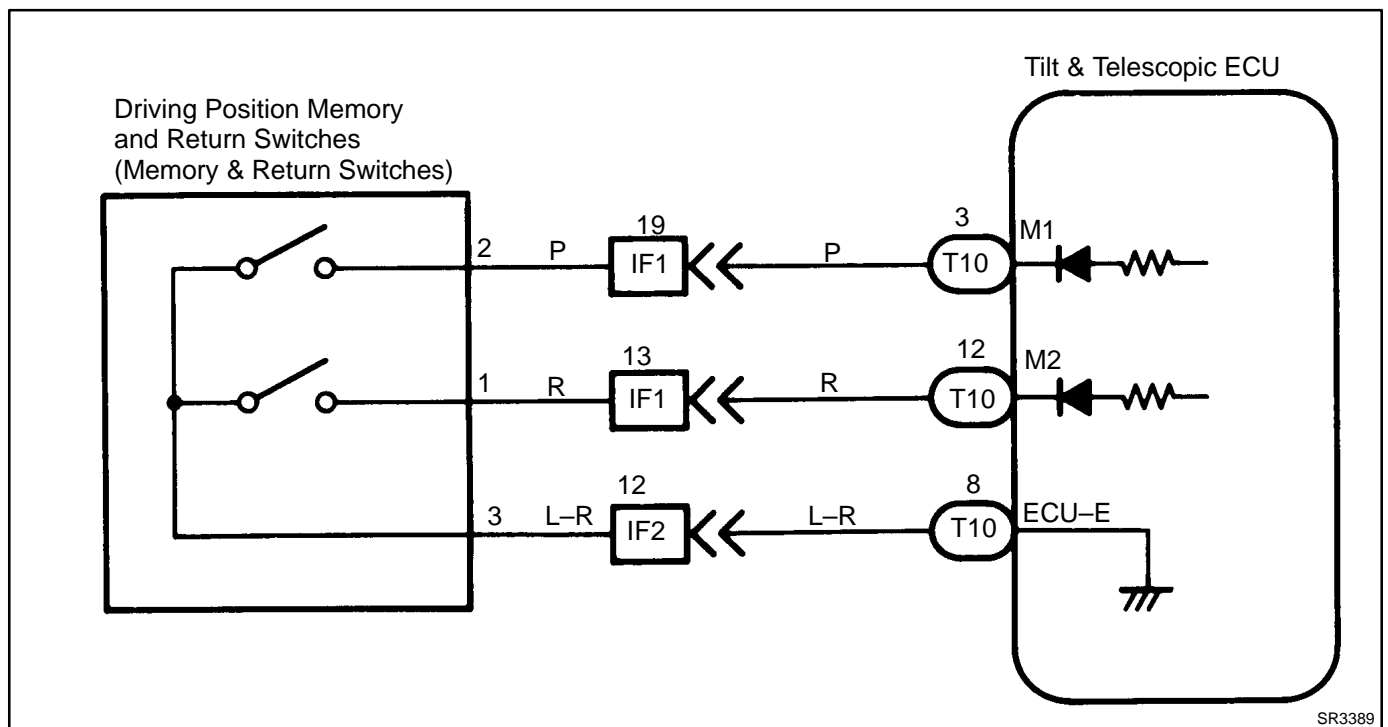
Memory & Return Switches Circuit

CIRCUIT DESCRIPTION



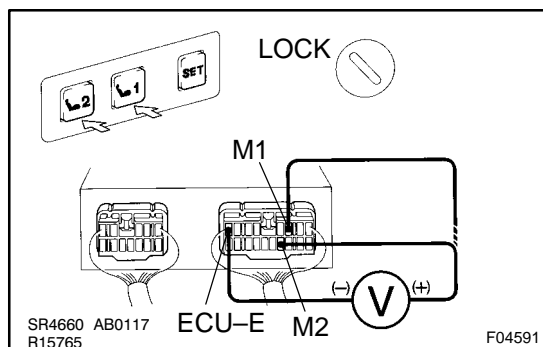
A memory command signal when switch 1 or 2 pushed while SET switch is being pushed ON or a return command signal when switch 1 or 2 is pushed ON is sent to the ECU for memory and return operations of the tilt, telescopic, seat and mirror.

WIRING DIAGRAM



INSPECTION PROCEDURE

1 Check voltage between terminals M1, M2 and ECU-E of ECU connector.

**PREPARATION:**

Remove ECU with connectors still connected.

CHECK:

Measure voltage between terminals M1, M2 and ECU-E of ECU connector when memory & return switches is ON and OFF.

OK:

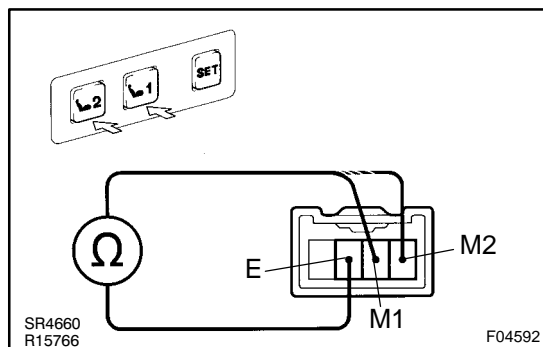
Memory & Return Switches	Voltage
ON	Below 1 V
OFF	10 – 14 V

OK

Proceed to next circuit inspection shown on matrix chart (See page [DI-498](#)).

NG

2 Check memory & return switches.

**PREPARATION:**

Disconnect driving position memory & return switches connector.

CHECK:

Measure resistance between terminals M2, M1 and E of driving position memory & return switches connector when memory & return switches in ON and OFF.

OK:

Switches	Terminal No. to continuity
Return SW1 ON	M1 – E
Return SW2 ON	M2 – E

NG

Replace driving position memory & return switches.

OK

3	Check harness and connector between ECU and memory & return switches (See page IN-29).
----------	---

NG

Repair or replace harness or connector.
--

OK

Check and replace ECU.
