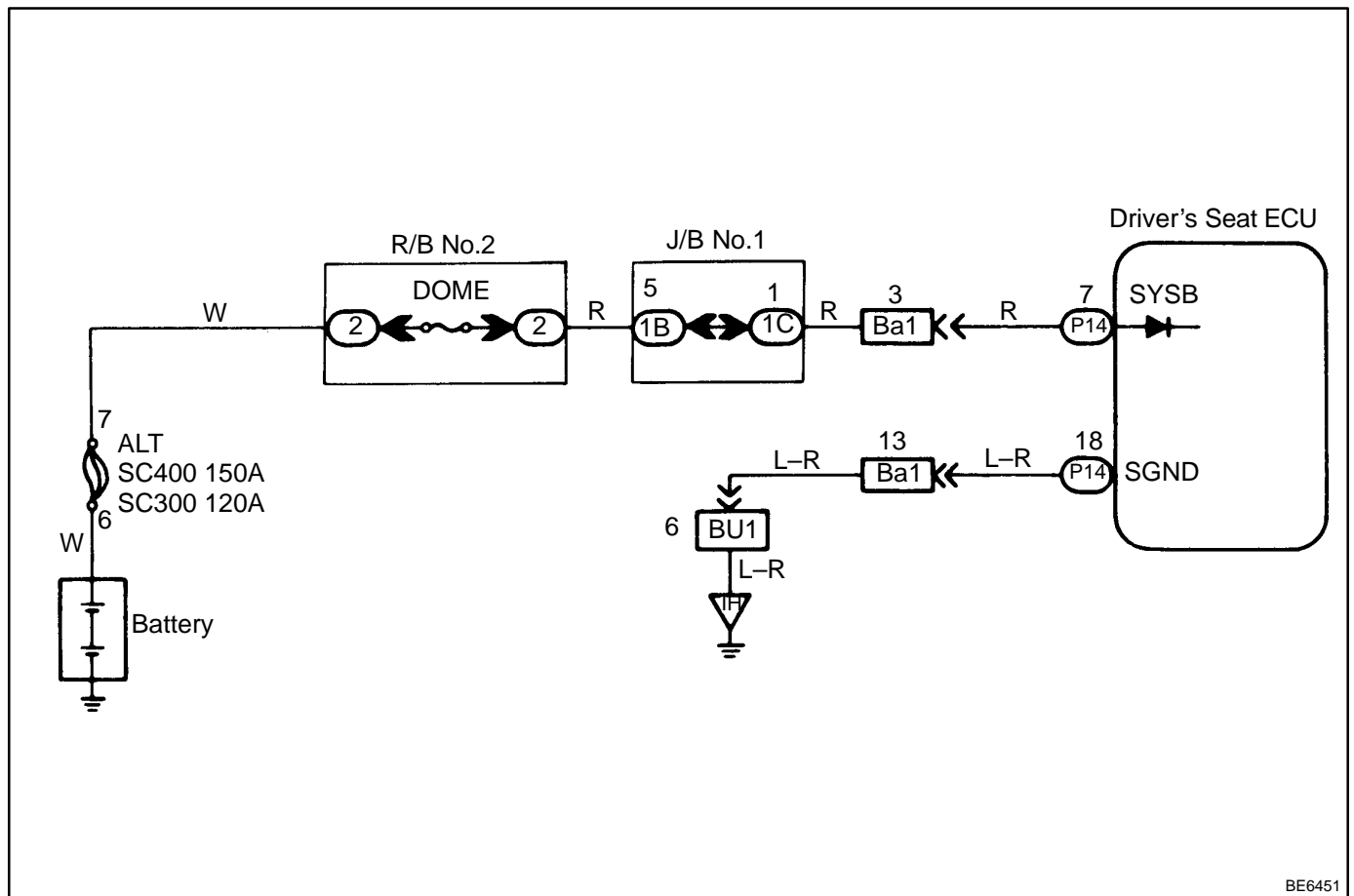


ECU Power Source Circuit

CIRCUIT DESCRIPTION

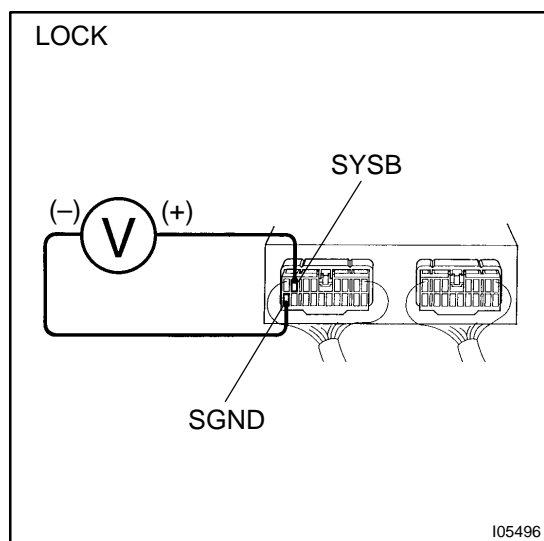
This circuit provides power for ECU operation and is also the power source for the sensors.

WIRING DIAGRAM



INSPECTION PROCEDURE

1	Check voltage between terminals SYSB and SGND of ECU connector.
---	--

**PREPARATION:**

Remove ECU with connectors still connected.

CHECK:

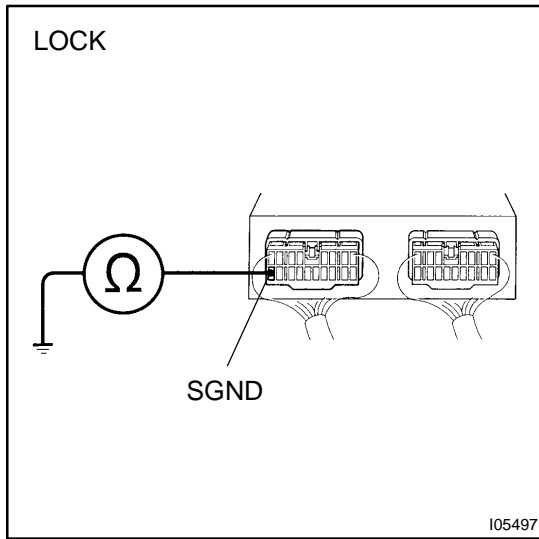
Measure voltage between terminals SYSB and SGND of ECU connector.

OK:**Voltage: 10 – 14 V**

OK

Proceed to next circuit inspection shown on matrix chart (See page DI-597).

NG

2 Check continuity between terminal SGND of ECU connector and body ground.**CHECK:**

Measure resistance between terminal SGND of ECU connector and body ground.

OK:

Resistance: 1 Ω or less

NG

Repair or replace harness or connector.

OK**3 Check DOME fuse.****NG**

**Check for short in all the harness and components connected to the DOME fuse
(See attached wiring diagram).**

OK

Check and repair harness or connector between ECU and battery.