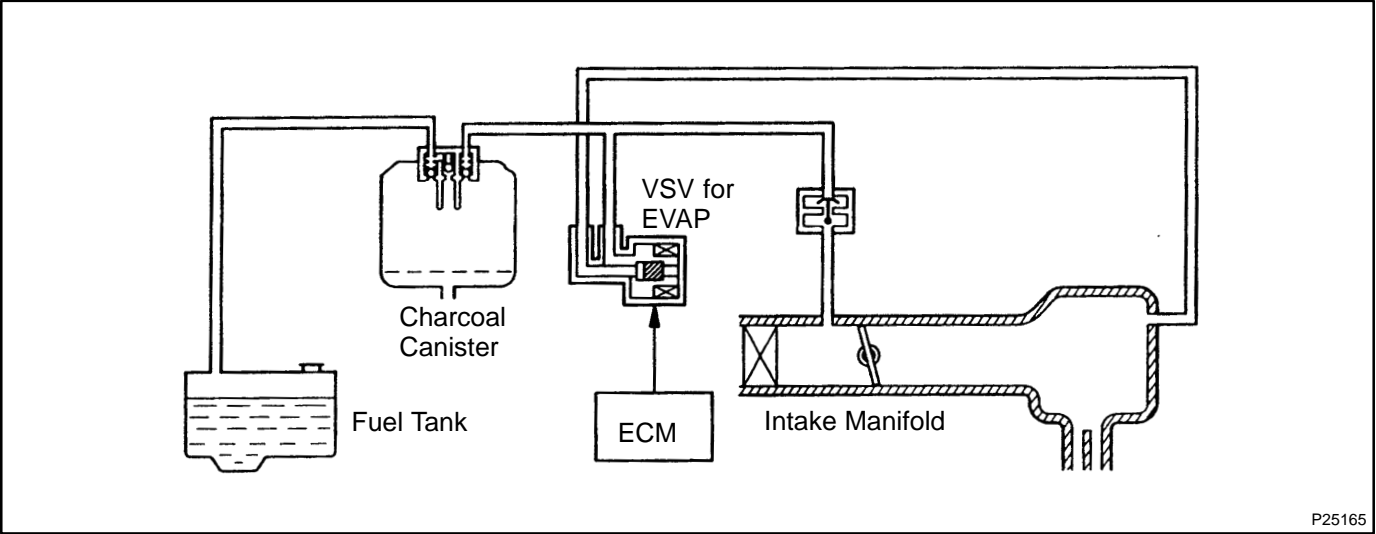


DTC	P0441	Evaporative Emission Control System Incorrect Purge Flow
-----	-------	---

CIRCUIT DESCRIPTION

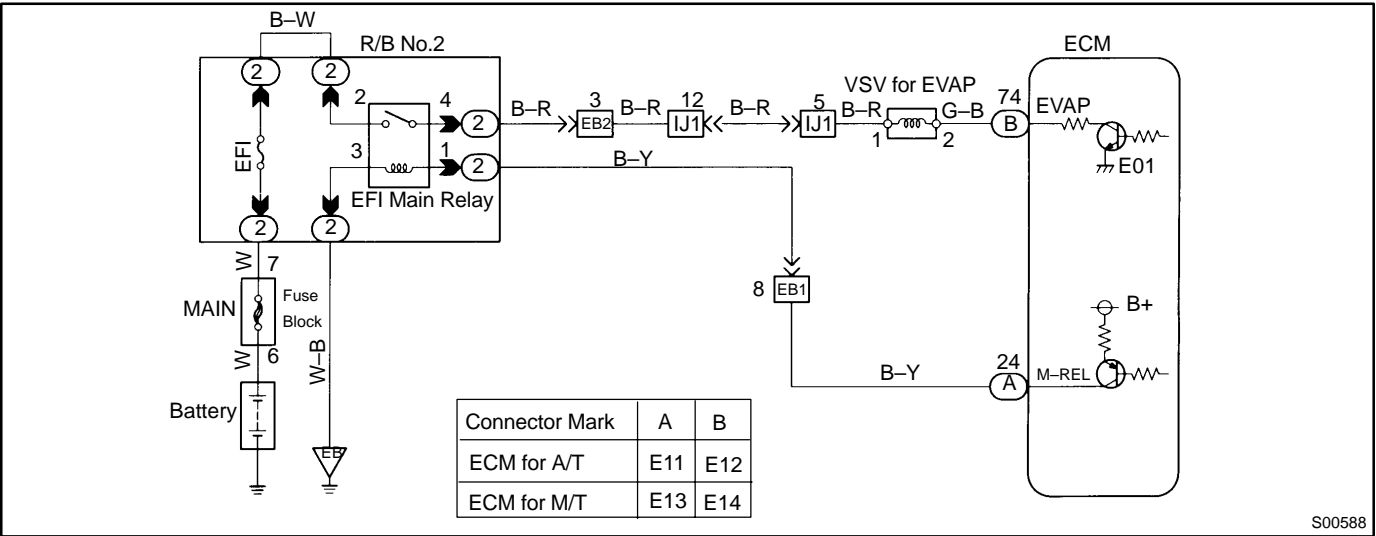
To reduce HC emissions, evaporated fuel from the fuel tank is routed through the charcoal canister to the intake manifold for combustion in the cylinders.

The ECM changes the duty signal to the VSV for EVAP so that the intake quantity of HC emissions is appropriate for the driving conditions (engine load, engine speed, etc.) after the engine is warmed up.



DTC No.	DTC Detecting Condition	Trouble Area
P0441	The proper response to the computer command does not occur (2 trip detection logic)	<ul style="list-style-type: none">• Open or short in VSV circuit for EVAP• VSV for EVAP• ECM• Vacuum hose blocked or disconnected• Charcoal canister

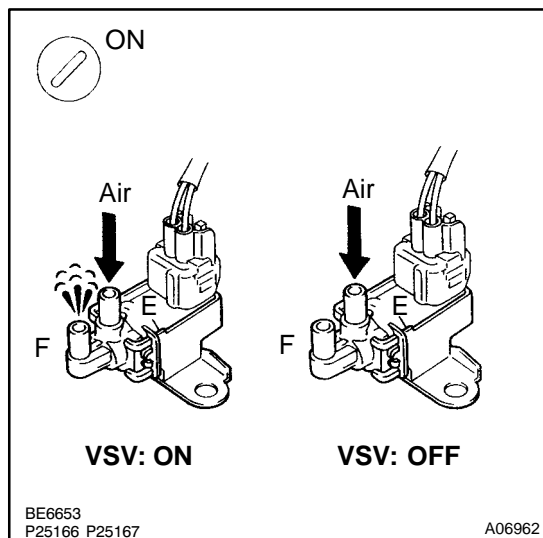
WIRING DIAGRAM



INSPECTION PROCEDURE

LEXUS hand-held tester

- | | |
|---|---|
| 1 | Connect the LEXUS hand-held tester and check operation of VSV for EVAP. |
|---|---|

**PREPARATION:**

- Connect the LEXUS hand-held tester to the DLC3.
- Turn ignition switch ON and LEXUS hand-held tester main switch ON.
- Select the ACTIVE TEST mode on the LEXUS hand-held tester.

CHECK:

Check operation of VSV when VSV is operated by the LEXUS hand-held tester.

OK:

VSV is ON:

Air from pipe E flows out through pipe F.

VSV is OFF:

Air does not flow from pipe E to pipe F.

OK

Go to step 4.

NG

- | | |
|---|--------------------------------------|
| 2 | Check VSV for EVAP (See page SF-69). |
|---|--------------------------------------|

NG

Replace VSV for EVAP.

OK

- | | |
|---|--|
| 3 | Check for open and short in harness and connector between EFI main relay (Marking: EFI MAIN) and ECM (See page IN-29). |
|---|--|

NG

Repair or replace harness or connector.

OK

Check and replace ECM (See page IN-29).

1997 LEXUS SC400/SC300 (RM513U)

4	Check connection of vacuum hose (See page EC-2).
---	--

NG	Repair or replace.
----	--------------------

OK

Check and repair charcoal canister
(See page EC-5).

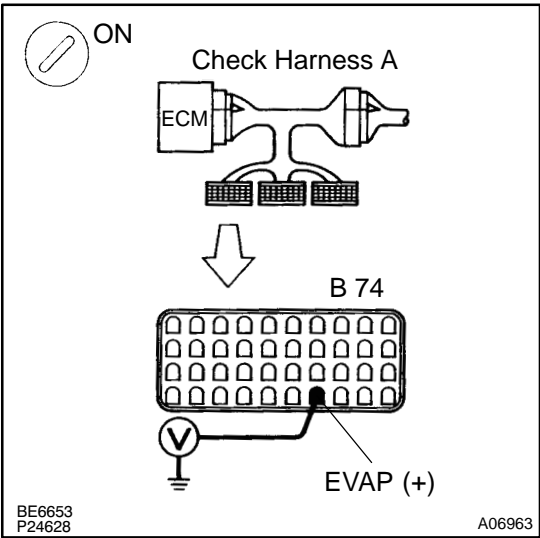
OBDII scan tool (excluding LEXUS hand-held tester)

1	Check VSV for EVAP (See page SF-69).
---	--------------------------------------

NG	Replace VSV for EVAP.
----	-----------------------

OK

2	Check voltage between terminal EVAP of ECM connector and body ground.
---	---



PREPARATION:

- (a) Connect Check Harness A (See page DI-18).
- (b) Turn ignition switch ON.

CHECK:

Measure voltage between terminal EVAP of ECM connector and body ground.

OK:

Voltage: 9 – 14 V

NG	Check and repair harness or connector.
----	--

OK

3	Check connection of vacuum hose (See page EC-2).
---	--

NG

Repair or replace.

OK

4	Check charcoal canister (See page EC-5).
---	--

NG

Repair or replace.

OK

Check and replace ECM (See page [IN-29](#)).