

DTC	21	Open in Vehicle Speed Sensor Circuit
------------	-----------	---

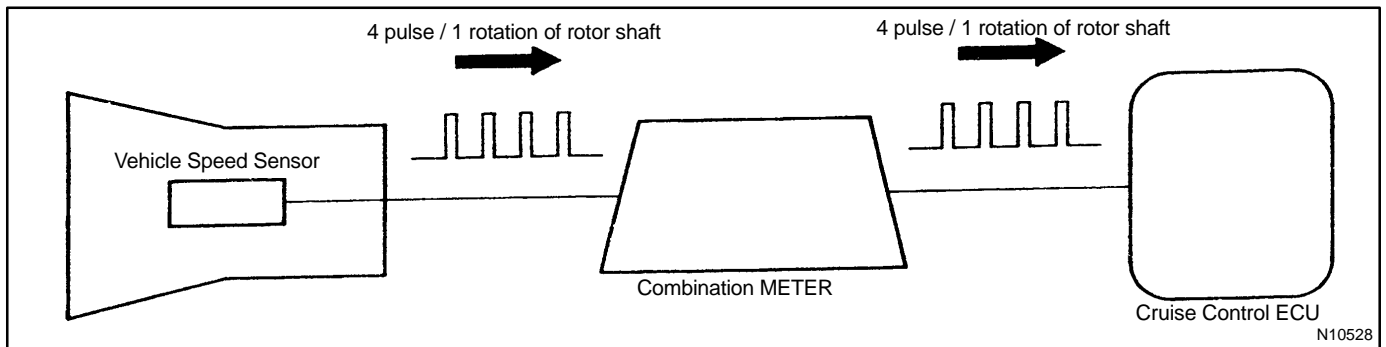
CIRCUIT DESCRIPTION

The vehicle speed sensor circuit is sent to cruise control ECU as vehicle speed signal.

The rotor shaft is driven by the gear of the transmission.

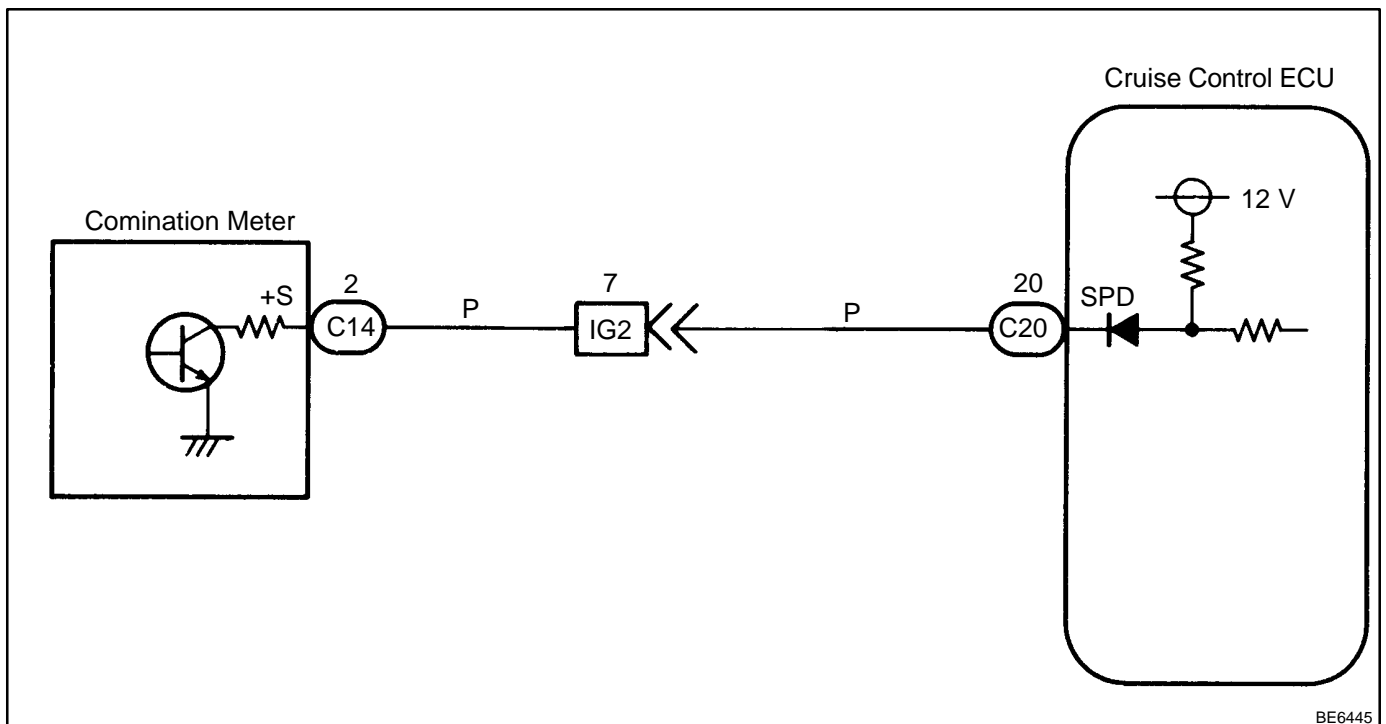
For each rotation of the shaft, the vehicle speed sensor sends a 4 pulse signal through the combination meter to the cruise control ECU (See the following).

This signal is converted inside the combination meter and sent as a 4-pulse signal to the cruise control ECU. The ECU calculates the vehicle speed from this pulse frequency.







DTC No.	Detection Item	Trouble Area
21	<ul style="list-style-type: none"> Speed signal is not input to the cruise control ECU while cruise control is set. 	<ul style="list-style-type: none"> Combination meter Harness or connector between cruise control ECU and combination meter, combination meter and vehicle speed sensor Vehicle speed sensor Cruise control ECU

WIRING DIAGRAM



INSPECTION PROCEDURE

1	Input signal check.
---	---------------------

Input Signal	Indicator Light Blinking Pattern
Drive at about 40 km/h (25 mph) or below	ON  Light  OFF
Drive at about 40 km/h (25 mph) or higher	ON  Light  OFF

CHECK:

- (a) See input signal check on page DI-760.
 (b) Check indicator light operation when driving with vehicle speed above 40 km/h (25 mph), and with vehicle speed below 40 km/h (25 mph).

OK:

Vehicle speed above 40 km/h (25 mph):

Indicator light blinks

Vehicle speed below 40 km/h (25 mph):

Indicator light stays on

OK

Check and replace cruise control ECU (See page IN-29).

NG

2	Check speedometer circuit (See Combination meter troubleshooting on page BE-2).
---	---

NG

Repair or replace harness, connector or combination meter assembly.

OK

3	Check harness and connector between cruise control ECU and combination meter, combination meter and vehicle speed sensor (See page IN-29).
---	--

NG

Repair or replace harness or connector.

OK

4	Check vehicle speed sensor (See page BE-86).
---	---

NG	Replace vehicle speed sensor.
----	-------------------------------

OK

Check and replace cruise control ECU
(See page [IN-29](#)).