

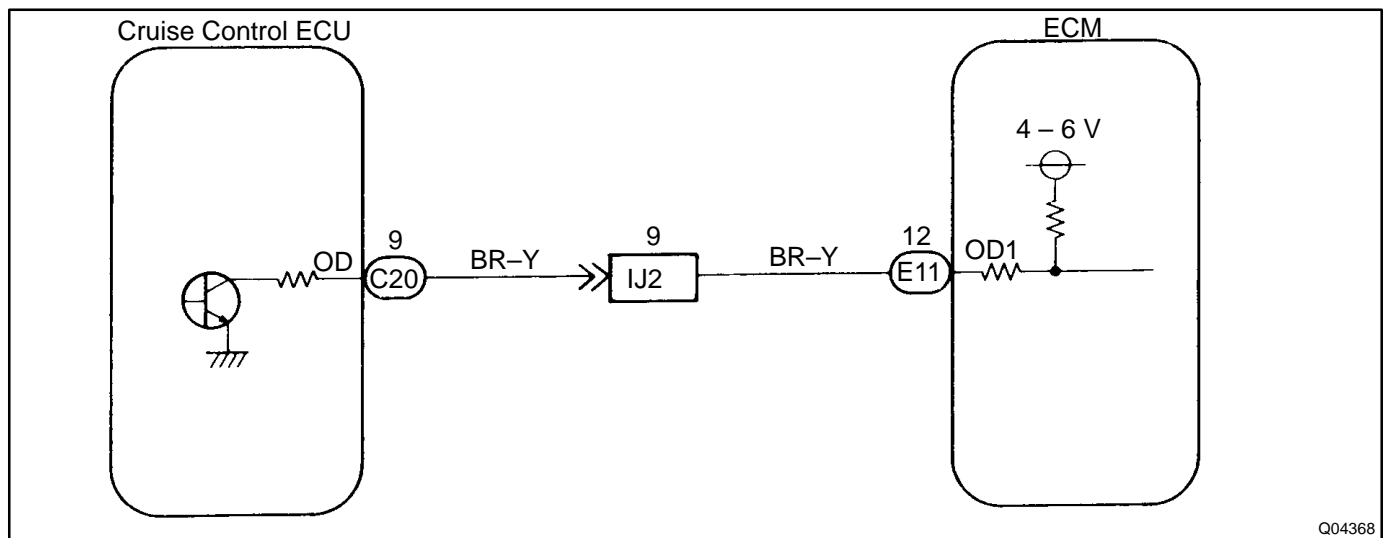
O/D Cancel Signal Circuit

CIRCUIT DESCRIPTION

While driving uphill with cruise control activated, in order to minimize gear shifting and provide smooth cruising, O/D may be prohibited temporarily under some conditions.

The cruise control ECU sends O/D cut signals to the ECM as necessary and the ECM cancels O/D shifting until these signals are discontinued.

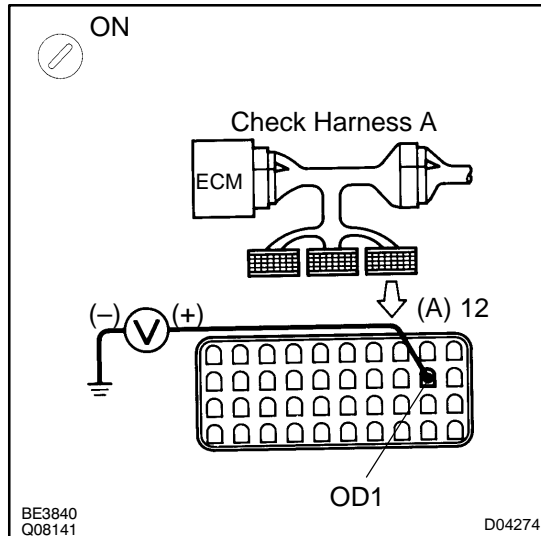
WIRING DIAGRAM



Q04368

INSPECTION PROCEDURE

1	Check voltage between terminal OD1 of ECM and body ground.
---	--

**PREPARATION:**

- (a) Connect the check harness A to ECM.
- (b) Turn ignition switch ON.

CHECK:

Measure voltage between terminal OD1 of check harness A and body ground.

OK:

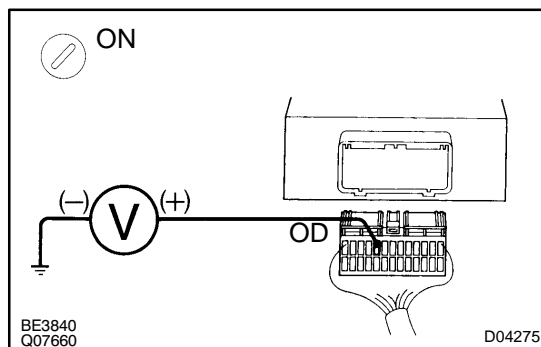
Voltage: 4 – 6 V

OK

Proceed to next circuit inspection shown on matrix chart (See page [DI-366](#)).

NG

2	Check voltage between terminal OD of cruise control ECU harness side connector and body ground.
---	---

**PREPARATION:**

- (a) Disconnect cruise control ECU connector.
- (b) Turn the ignition switch ON.

CHECK:

Measure voltage between terminal OD of cruise control ECU harness side connector and body ground.

OK:

Voltage: 4 – 6 V

OK

Check and replace cruise control ECU.

3	Check harness and connector between cruise control ECU and ECM (See page IN-29).
---	---

NG

Repair or replace harness or connector.

OK

Check and replace ECM.