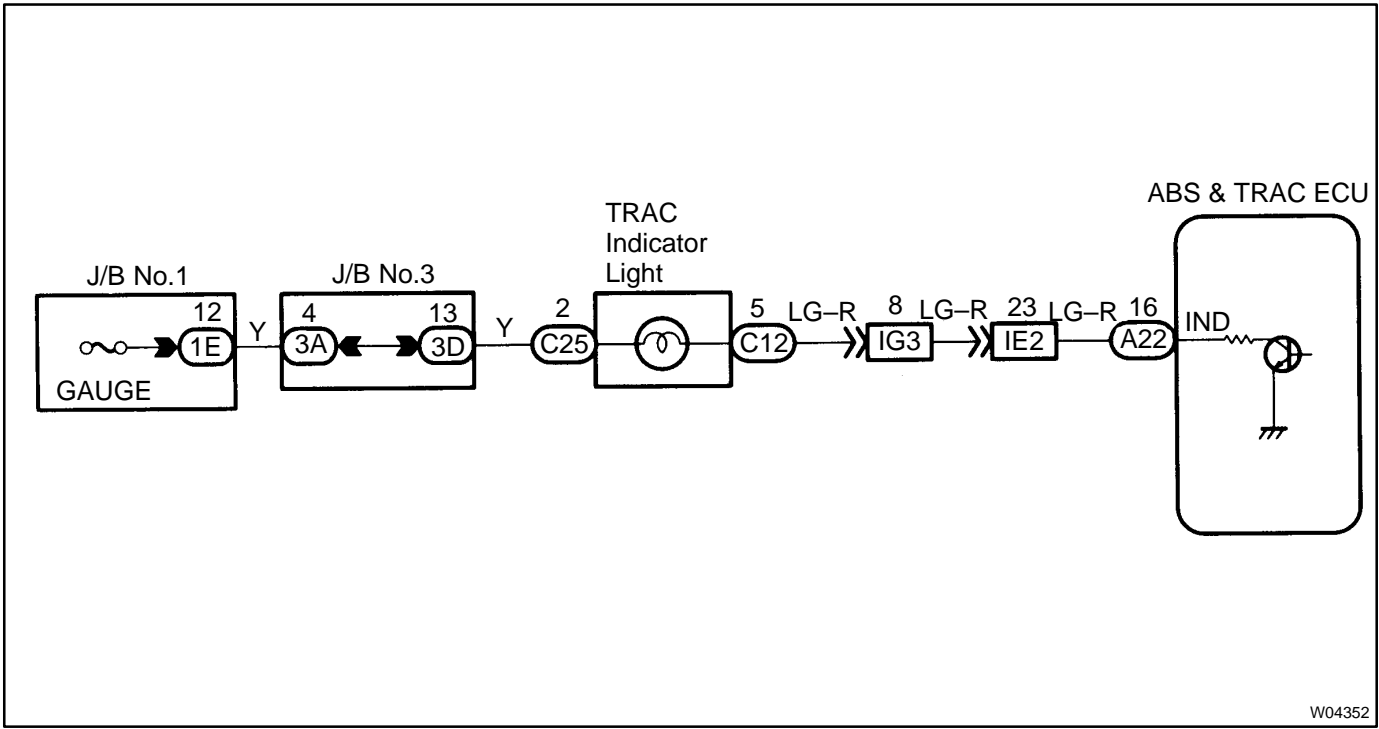


SLIP Indicator Light Circuit

CIRCUIT DESCRIPTION

The SLIP indicator blinks during TRAC operation.

WIRING DIAGRAM



INSPECTION PROCEDURE

1	Check SLIP indicator light.
---	-----------------------------

See combination meter troubleshooting on page [BE-59](#).

NG

Repair or replace combination meter.

OK

2	Check for short in harness and connector between ABS & TRAC ECU and SLIP indicator light (See page IN-29).
---	---

NG

Repair or replace harness or connector.

OK

Turn the IG switch OFF, check and replace
ABS & TRAC ECU.