

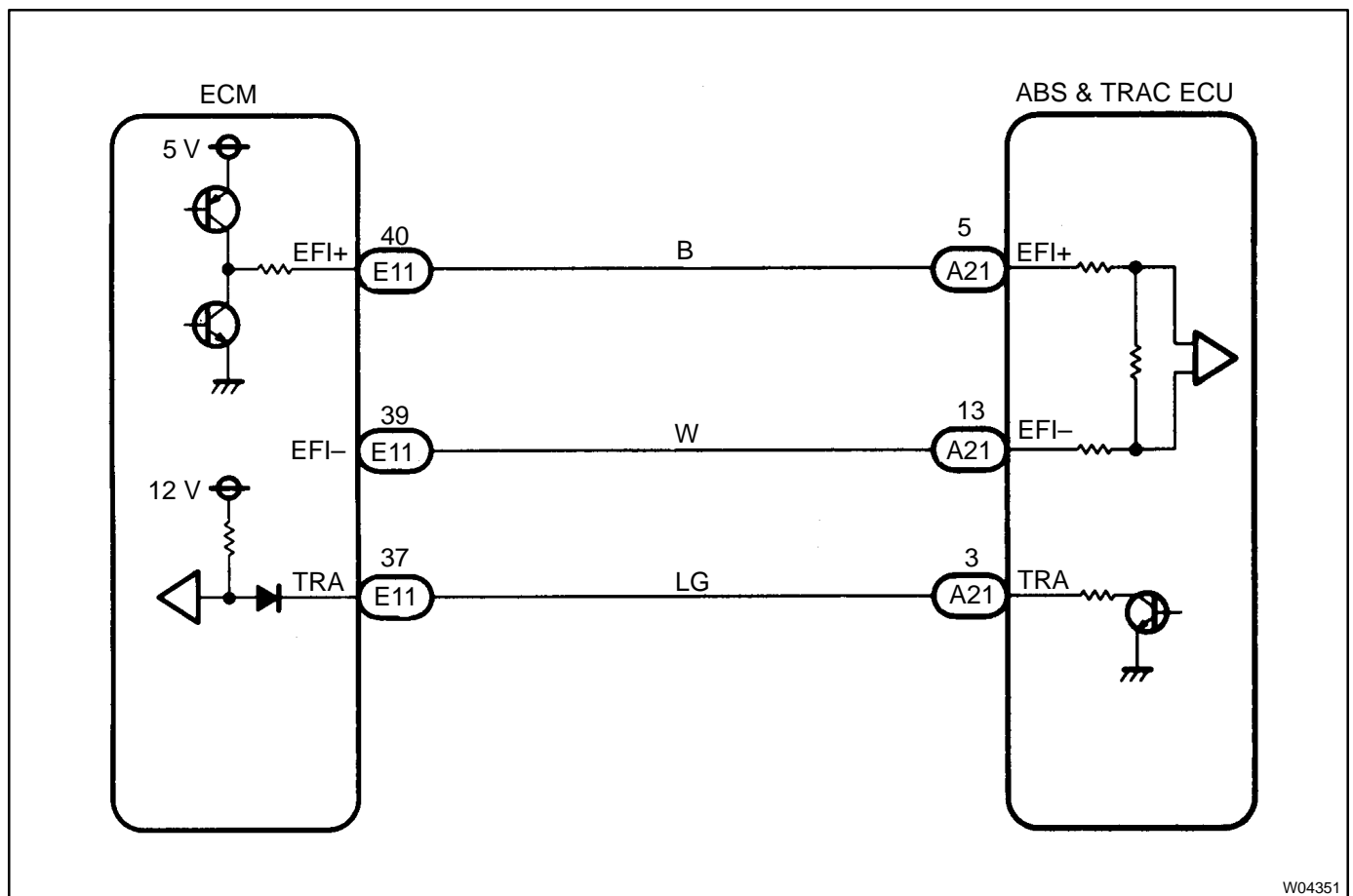
DTC	53	ECM Communication Circuit Malfunction
------------	-----------	--

CIRCUIT DESCRIPTION

This circuit is used to send TRAC control information from the ABS & TRAC ECU to the ECM (TRA), and engine control information from the ECM to the ABS & TRAC ECU (EFI+, EFI-).

DTC No.	DTC Detecting Condition	Trouble Area
53	Either of the following (1) or (2) continues for 5 sec.: (1) A signal is received from the ECM indicating trouble in the TRA circuit. (2) No EFI \pm data is received from the ECM when the engine speed is 500 rpm or more, or the vehicle speed is 60 km/h (37 mph) or more.	<ul style="list-style-type: none"> • Open or short in TRA circuit • Open or short in EFI+ or EFI- circuit • ECM • ABS & TRAC ECU

WIRING DIAGRAM



W04351

1	Check for open and short in harness and connector between terminals EFI+, EFI-, TRA of ABS & TRAC ECU and ECM (See page IN-29).
---	--

Repair or replace harness or connector.



Turn the IG switch off, check and replace ECM or ABS & TRAC ECU.