

CIRCUIT INSPECTION

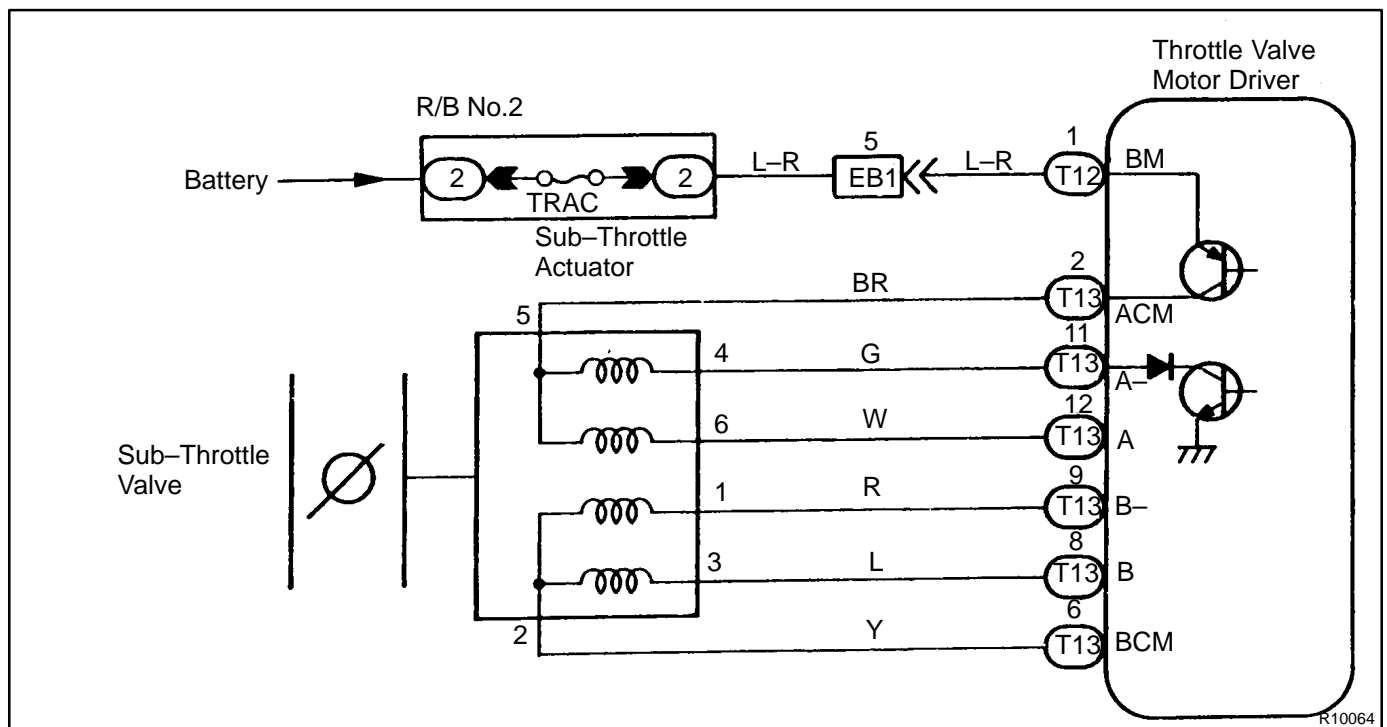
DTC	24	TRAC Sub-Throttle Actuator Circuit
------------	-----------	---

CIRCUIT DESCRIPTION

The sub-throttle actuator operates in accordance with signals from the ECU, controlling the opening and closing of the sub-throttle valve.

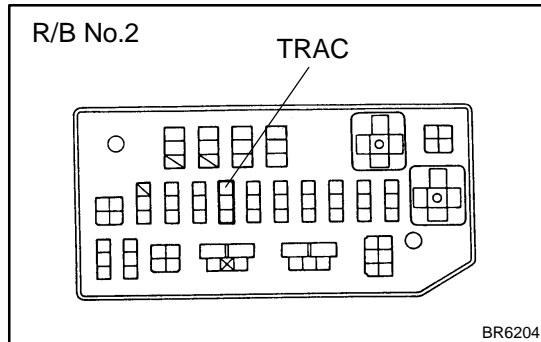
DTC No.	DTC Detecting Condition	Trouble Area
24	Open or short in sub-throttle actuator circuit	<ul style="list-style-type: none"> • TRAC fuse • Open or short in BM circuit • Sub-throttle actuator • Open or short in sub-throttle actuator circuit • Throttle valve motor driver

WIRING DIAGRAM



INSPECTION PROCEDURE

1 Check TRAC fuse.



PREPARATION:

Remove TRAC fuse from R/B No.2.

CHECK:

Check continuity of TRAC fuse.

OK:

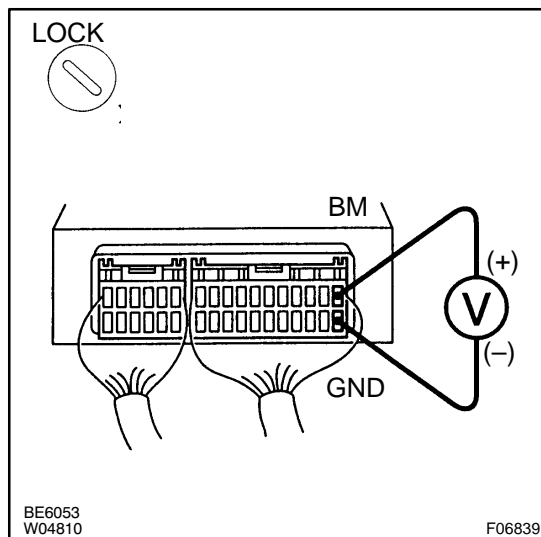
Continuity

NG

Check for short in all harness and components connected to TRAC fuse (See attached wiring diagram).

OK

2 Check voltage between terminals BM and GND of throttle valve motor driver.



PREPARATION:

Remove throttle valve motor driver with connectors still connected.

CHECK:

Measure voltage between terminals BM and GND of throttle valve motor driver.

OK:

Voltage: 10 – 14 V

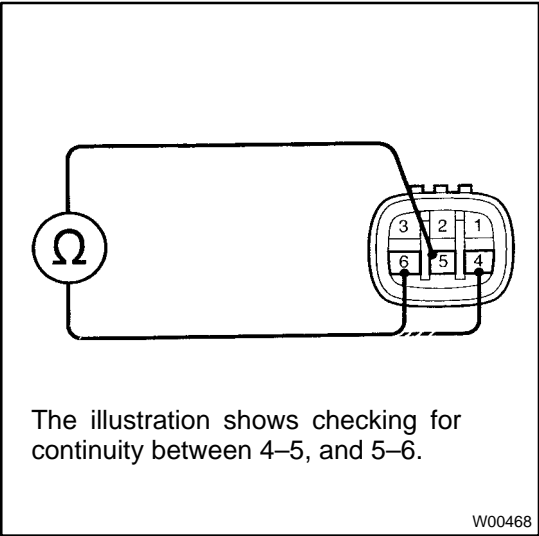
NG

Check and repair harness or connector.

OK

3

Check sub-throttle actuator.



PREPARATION:

Disconnect sub-throttle actuator connector.

CHECK:

Check continuity between each terminal of sub-throttle actuator connector.

OK:

Terminals 1 and 2	Continuity (Reference value 0.9 Ω)
Terminals 2 and 3	
Terminals 4 and 5	
Terminals 5 and 6	

NG

Replace sub-throttle actuator.

OK

4

Check for open and short in harness and connector between throttle valve motor drive and sub-throttle actuator (See page [IN-29](#)).

NG

Repair or replace harness or connector.

OK

Check and replace throttle valve motor driver.