

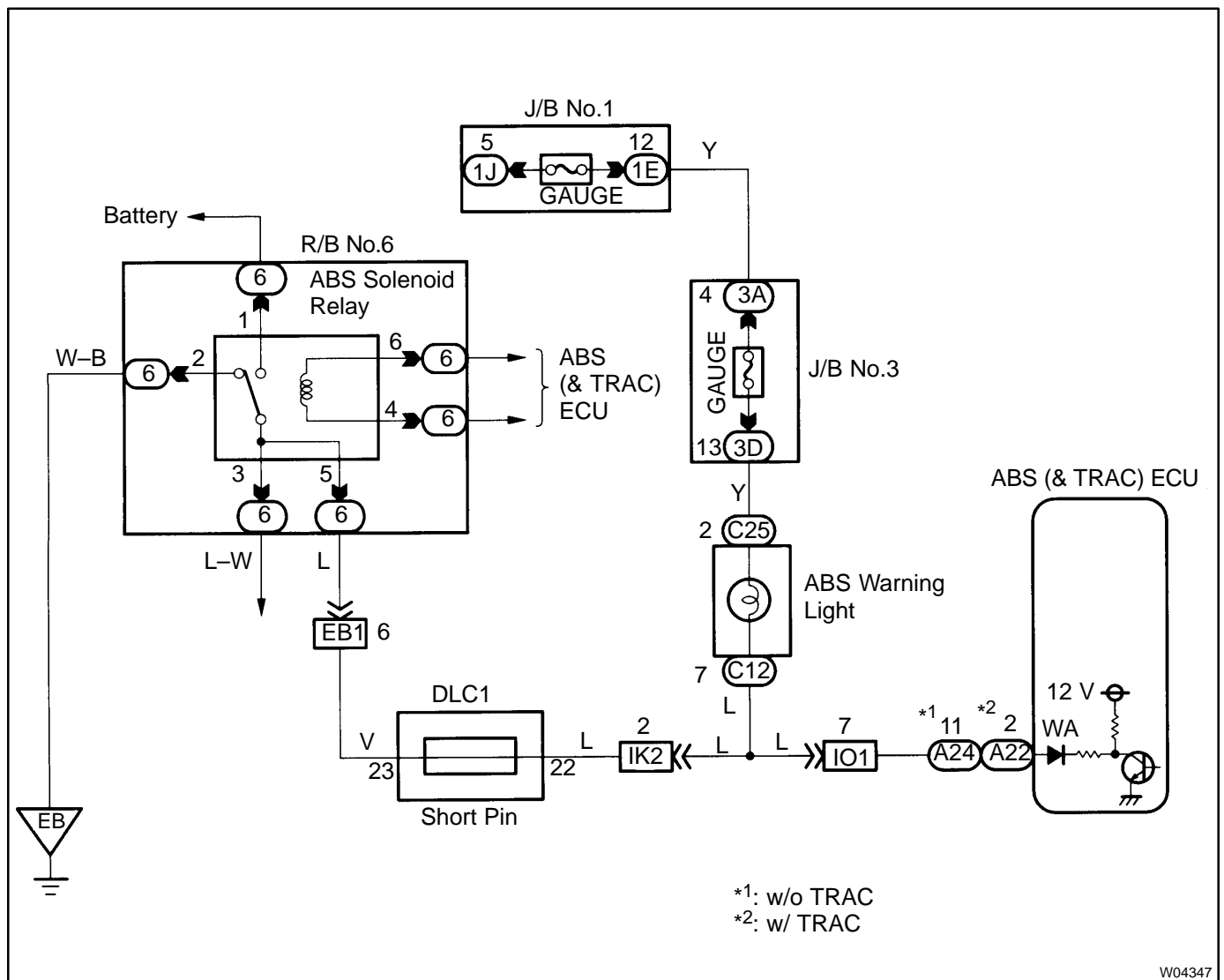
## ABS Warning Light Circuit

## CIRCUIT DESCRIPTION

If the ECU detects trouble, it lights the ABS warning light while at the same time prohibiting ABS control. At this time, the ECU records a DTC in memory.

After removing the short pin of the DLC1, connect terminals Tc and E<sub>1</sub> of the DLC1 of DLC2 to make the ABS warning light to blink and output the DTC.

## WIRING DIAGRAM



## INSPECTION PROCEDURE

Troubleshooting in accordance with the chart below for each trouble symptom.

ABS warning light does not light up	Go to step 1
ABS warning light remains on	Go to step 3

<b>1</b>	<b>Check ABS warning light.</b>
----------	---------------------------------

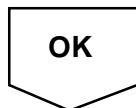
See Combination Meter Troubleshooting on page [BE-59](#).

<b>NG</b>	<b>Replace bulb or combination meter assembly.</b>
-----------	----------------------------------------------------



<b>2</b>	<b>Turn the IG switch OFF, check ABS solenoid relay (See page <a href="#">DI-419</a>).</b>
----------	--------------------------------------------------------------------------------------------

<b>NG</b>	<b>Replace ABS control relay.</b>
-----------	-----------------------------------

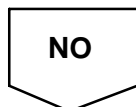


<b>Repair or replace and check for open in harness and connector between DLC1 and ABS solenoid relay and body ground (See page <a href="#">IN-29</a>).</b>	
------------------------------------------------------------------------------------------------------------------------------------------------------------	--

<b>3</b>	<b>Is DTC output?</b>
----------	-----------------------

Check DTC on page [DI-408](#).

<b>YES</b>	<b>Repair circuit indicated by the code output.</b>
------------	-----------------------------------------------------



4	Does ABS warning light go off if short pin is removed?
---	--------------------------------------------------------

NO

Check for short in harness and connector between warning light and DLC1 and ECU (See page [IN-29](#)).

YES

5	Turn the IG switch OFF, check ABS solenoid relay (See step No. 2).
---	--------------------------------------------------------------------

NG

Replace ABS solenoid relay.

OK

Check for short in harness and connector between DLC1 and ABS solenoid relay (See page [IN-29](#)).