

COMBINATION METER

TROUBLESHOOTING

BE0LN-03

CAUTION:

- When checking voltage, resistance, etc., use a high impedance type tester (it is impossible with a simple tester).
- When the ignition switch is turned to START, all meters will go out but this is normal.
- When replacing the internal mechanism (computer parts) of the meter, be careful that no part of your body or clothing comes in contact with the terminals of the leads from the IC, etc. of the replacement parts (spare parts).
- Do not disconnect the battery while engine is running as this would cause an instant reverse charge, resulting in damage to the components.
- Always disconnect the battery terminals before pulling apart connectors or terminals.
- To prevent damage, handle meters with care.

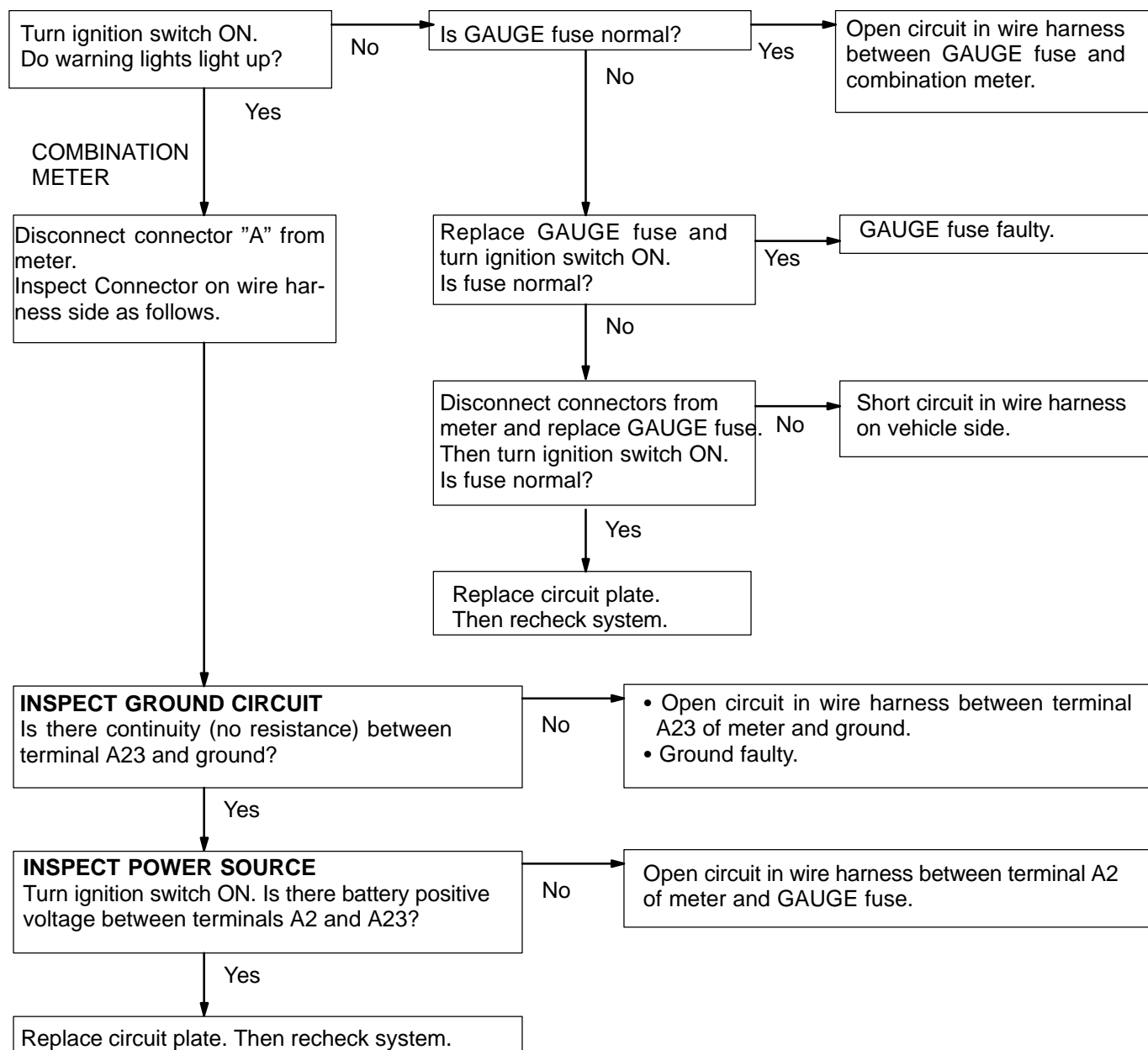
Parts name	Trouble	Refer to
All Meters, Gauges, and Illuminations	No display at all.	1
	The 4 indicators needle do not light up.	Replace circuit plate
	One indicator needle does not light up.	2
	The entire character plate is not illuminated at all.	Replace circuit plate
	The character plate is illuminated on one side only.	3
	Brightness does not change even when light control switch is operated (OFF ↔ TAIL).	4
	Brightness does not change even when rheostat volume is turned.	5
	Remains dimmed when the light control switch is turned OFF.	Replace circuit plate
	Does not go out while starter running.	6
	Speedometer does not operate while driving.	7
Speedometer	Display is faulty.	Replace Meter Lens
	Vehicle speed signal (4P) faulty.	8
	Tachometer does not operate while engine running.	9
Tachometer	Display is faulty.	Replace Meter Lens
	Does not operate or operation is abnormal.	10
Fuel Gauge	Warning light does not light up or always lights up.	11
Engine Coolant Temperature Gauge	Does not operate or operation is abnormal.	12
Odometer and Twin Trip Meter	Display does not after during driving.	13
	Display is reset whenever ignition switch is turned off.	14
	Abnormal display.	Replace Odometered trip meter
Outside Air Temperature Display	Abnormal display.	15
Engine Oil Level Warning	Warning light does not light up.	16
	Warning light always light up.	17
Electronically Controlled Transmission PWR Indicator	Abnormal operation or warning does not light up.	18

CRUISE MAIN Indicator	Abnormal operation or indicator does not light up.	19
O/D OFF Indicator	Abnormal operation or indicator does not light up.	20
Shift Position Indicator	Abnormal operation or indicator does not light up.	21
TRAC OFF Indicator	Abnormal operation or indicator does not light up.	22
ABS Warning	Abnormal operation or warning does not light up.	23
HI-Beam Indicator	Abnormal operation or indicator does not light up.	24
Turn Signal Indicator	Abnormal operation or indicator does not light up.	25
Seat Belt Warning Chime	Abnormal operation or chime does not operate.	See page BE-86
Key Unlock Warning Chime	Abnormal operation or chime does not operate.	See page BE-86
Window Washer Warning	Abnormal operation or warning does not light up.	26

TROUBLESHOOTING

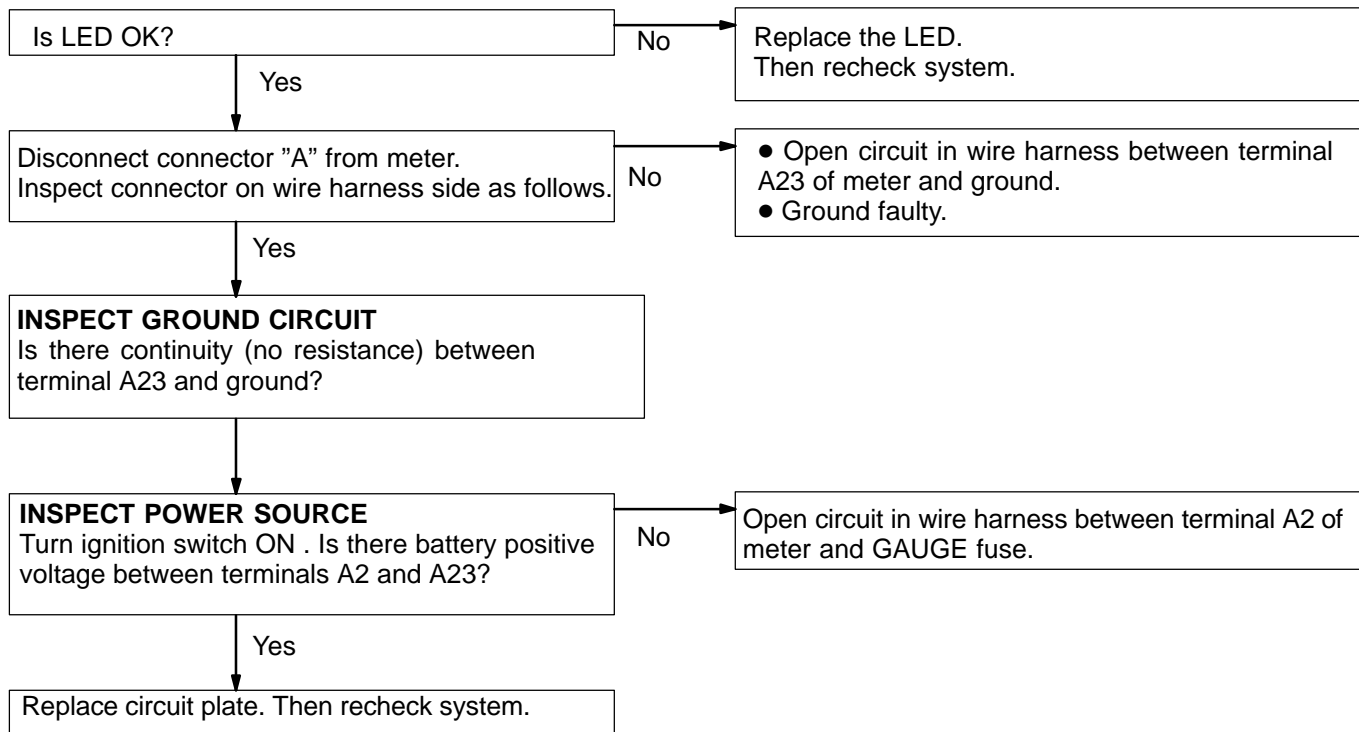
1	ALL METERS, GAUGES AND ILLUMINATIONS	No display at all.
---	---	---------------------------

HINT: While carrying out the following inspection, make certain that the connectors and terminals are properly connected.



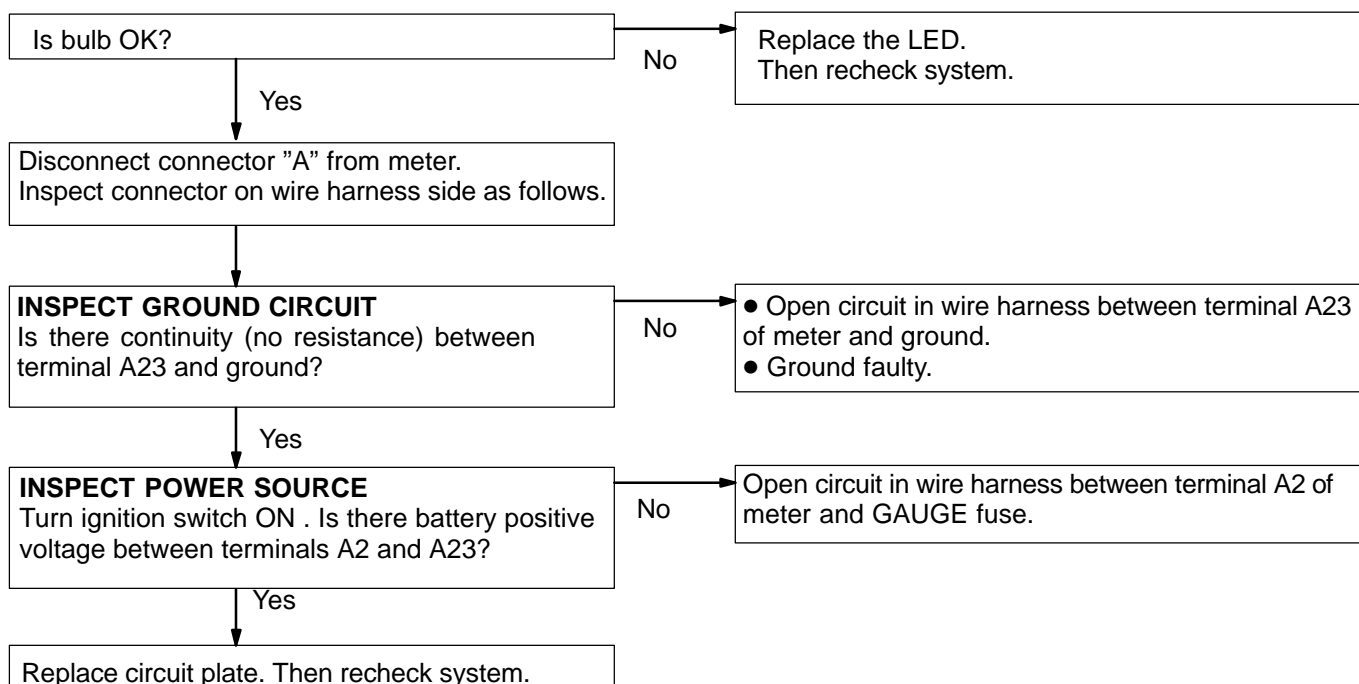
2	ALL METERS, GAUGES AND ILLUMINATIONS	One indicator needle does not light up.
---	---	--

HINT: While carrying out the following inspection, make certain that the connectors and terminals are properly connected.



3	ALL METERS, GAUGES, AND ILLUMINATIONS	The character plate is illuminated on one side.
---	--	--

HINT: While carrying out the following inspection, make certain that the connectors and terminals are properly connected.

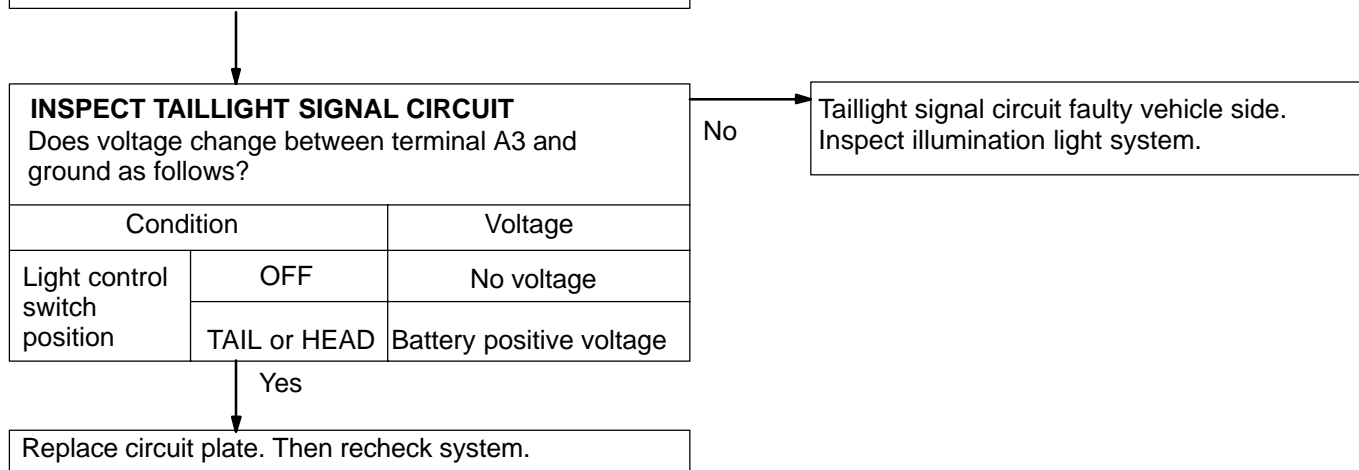


4	ALL METERS, AND GAUGES, AND ILLUMINATIONS	Brightness does not change even when light control switch is operated. (OFF↔TAIL)
---	--	--

HINT: While carrying out the following inspection, make certain that the connectors and terminals are properly connected.

COMBINATION METER

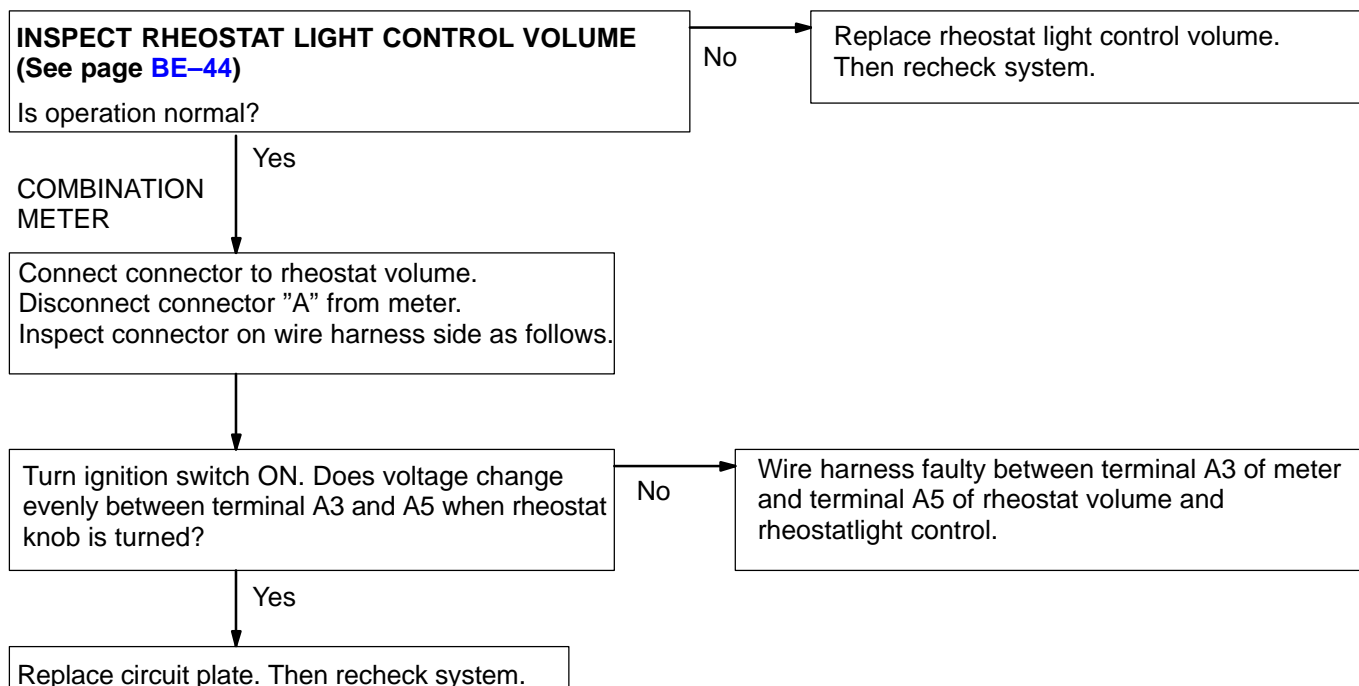
Disconnect connector "A" from meter.
Inspect connector on wire harness side as follows.



5	ALL METERS, GAUGES, AND ILLUMINATIONS	Brightness does not change even when rheostat volume is turned.
---	--	--

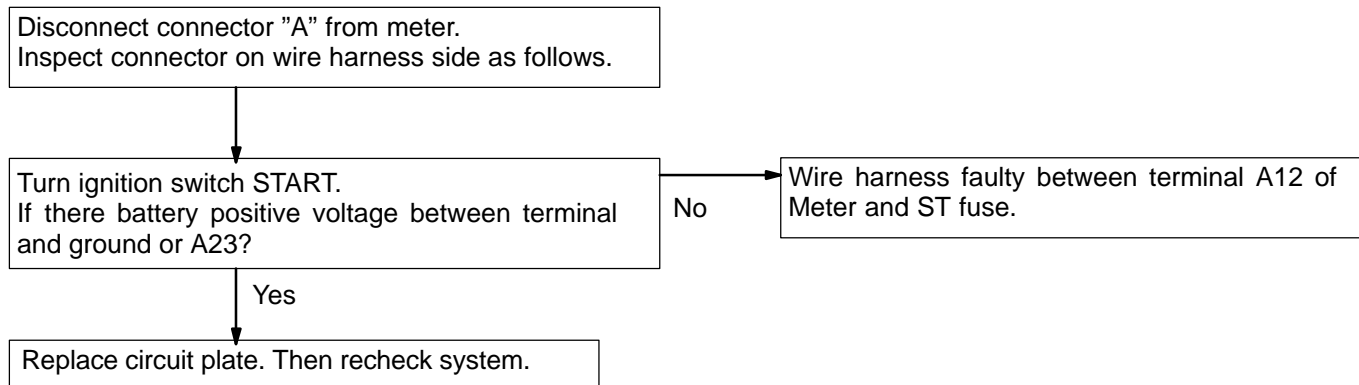
HINT: While carrying out the following inspection, make certain that the connectors and terminals are properly connected.

RHEOSTAT LIGHT CONTROL VOLUME



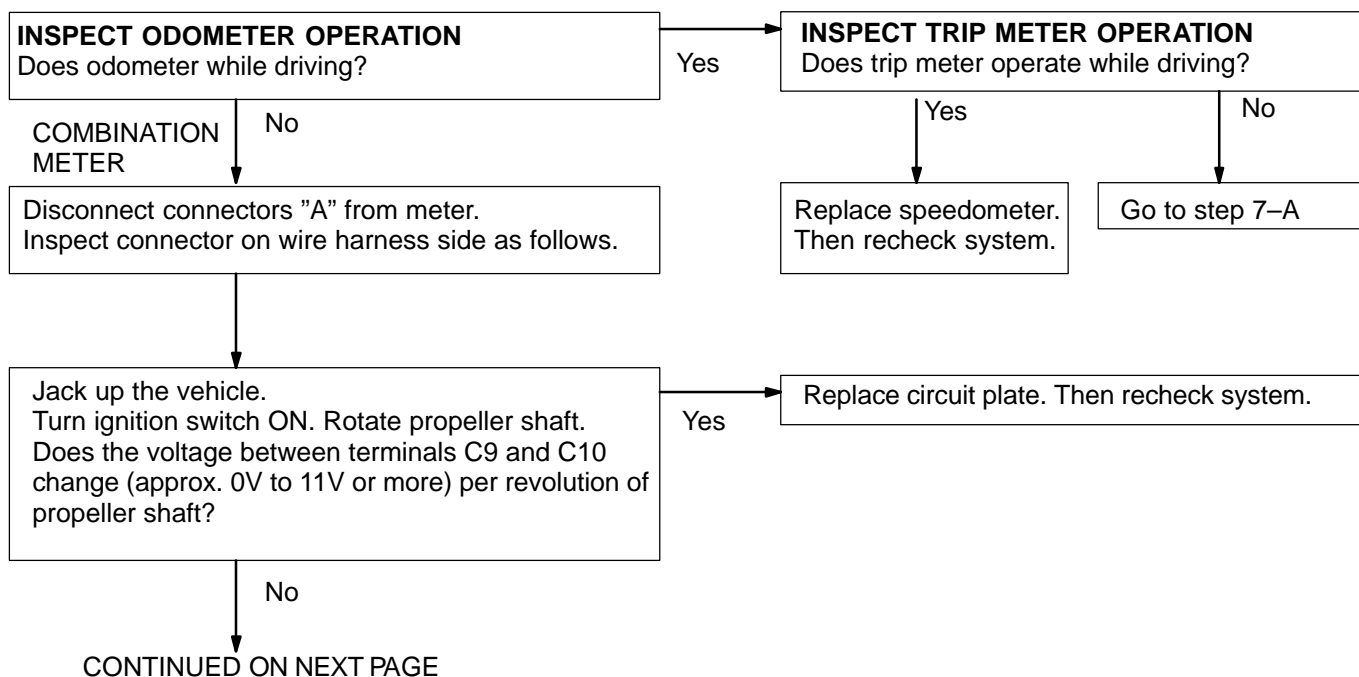
6	ALL METERS, GAUGES, AND ILLUMINATIONS	Does not go out while starter running.
---	--	---

HINT: While carrying out the following inspection, make certain that the connectors and terminals are properly connected.



7	SPEEDOMETER	Speedometer does not operate while driving
---	--------------------	---

HINT: While carrying out the following inspection, make certain that the connectors and terminals are properly connected.



CONTINUED FROM PREVIOUS PAGE
 NO.1 VEHICLE
 SPEED SENSOR

**INSPECT NO.1 VEHICLE SPEED SENSOR
 OPERATION (See page BE-86)**

Is operation normal?

No

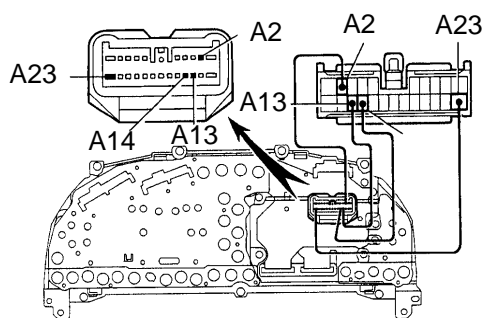
Replace speed sensor. Then recheck system.

Yes

- Inspect speed sensor
- Inspect wire harness between terminal A13, A14 and speed sensor.

7-A
 COMBINATION
 METER

Wire Harness Side Connectors



(a) Remove combination meter, and connect the wire harness side connector terminals A2, A13, A14 and A23 to the meter side connectors by lead wire.

(b) Jack up the vehicle and turn the ignition switch ON.

(c) Rotate propeller shaft.

(d) Does the voltage between terminals A13 and A14 change (approx. 0 V to 11 V or more) for every revolution of the propeller shaft?

Yes

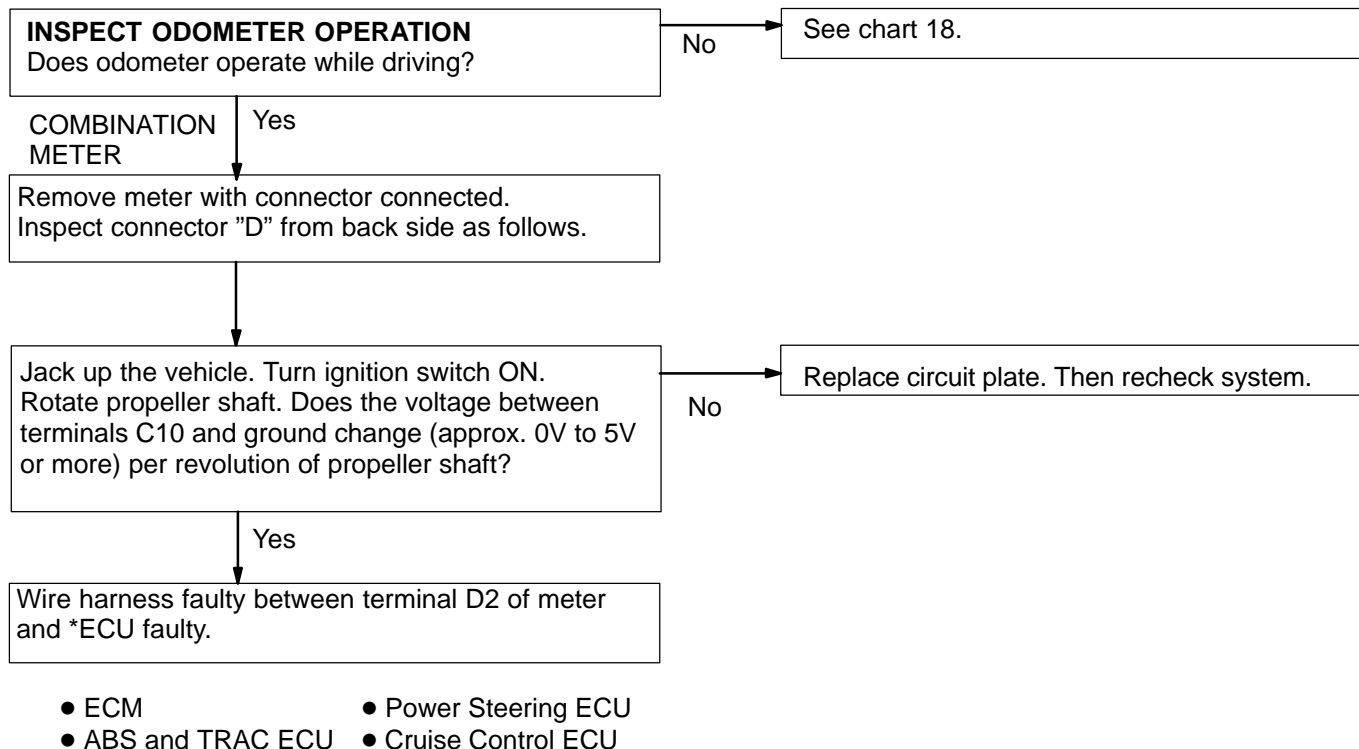
Replace speedometer. Then recheck system.

No

Replace circuit plate. Then recheck system.

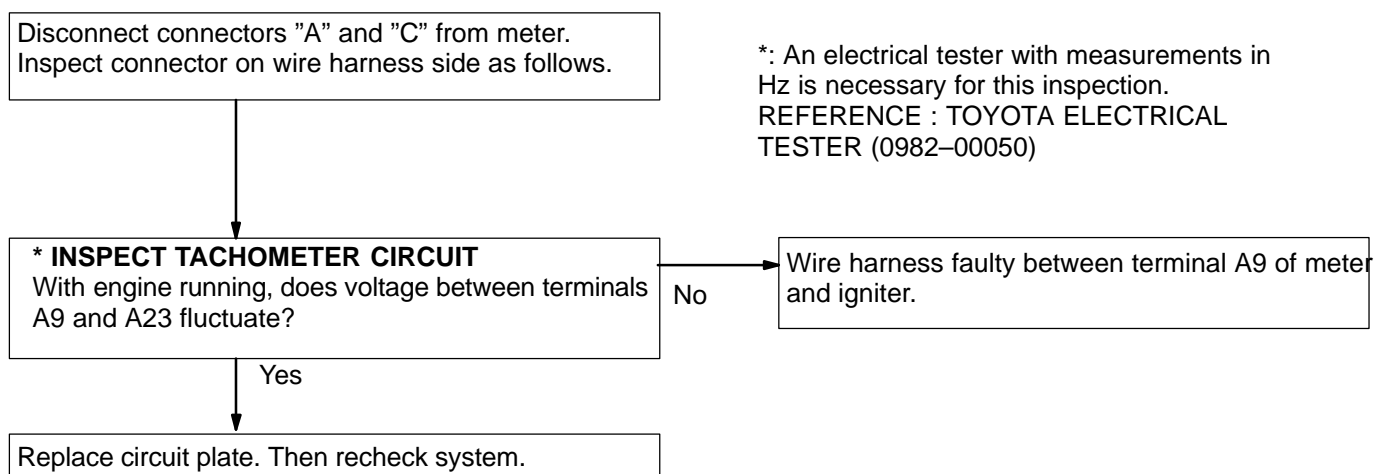
8	SPEEDOMETER	Vehicle speed signal (4P) faulty.
---	--------------------	--

HINT: While carrying out the following inspection, make certain that the connectors and terminals are properly connected.



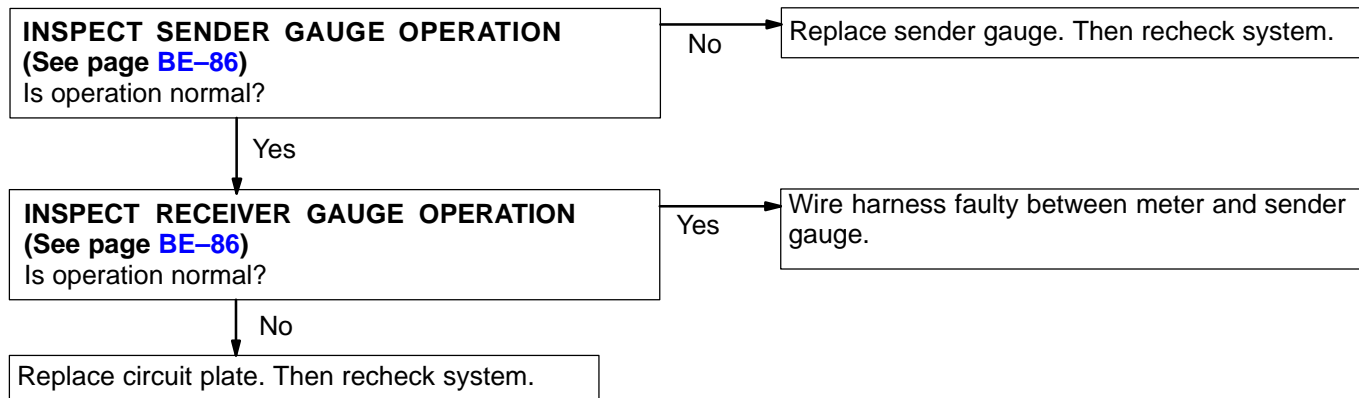
9	TACHOMETER	Tachometer does not operate while engine running.
---	-------------------	--

HINT: While carrying out the following inspection, make certain that the connectors and terminals are properly connected.



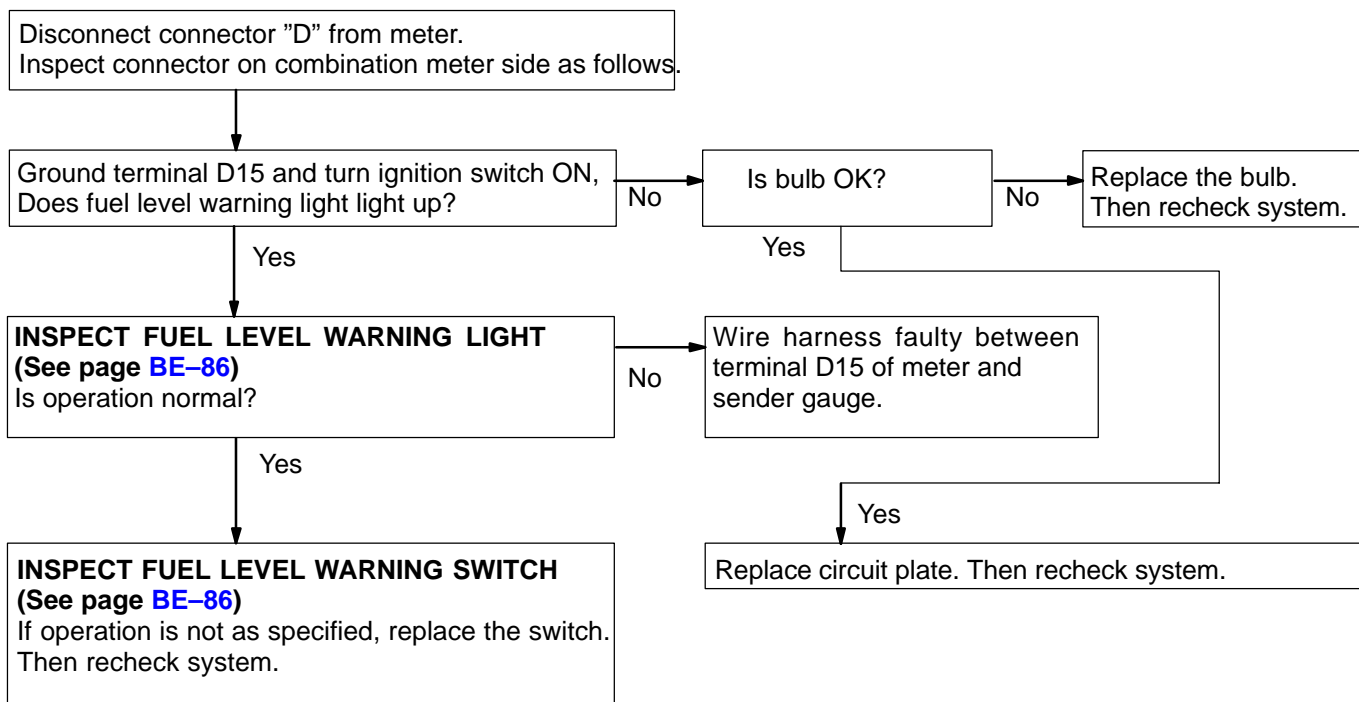
10	FUEL GAUGE	Does not operate or operation is abnormal.
-----------	-------------------	---

HINT: While carrying out the following inspection, make certain that the connectors and terminals are properly connected.



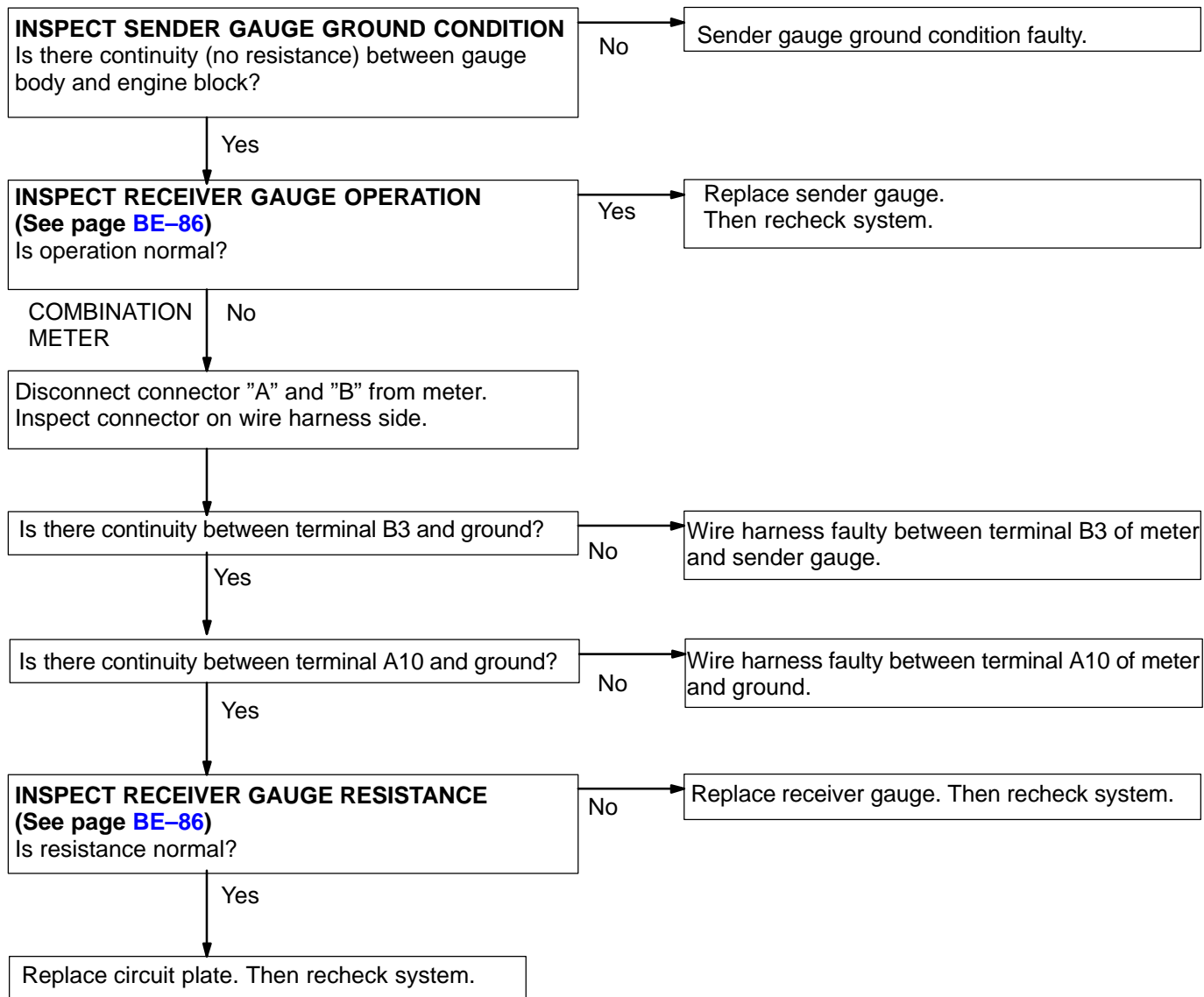
11	FUEL LEVEL WARNING	Warning light does not light up or always lights up.
-----------	---------------------------	---

HINT: While carrying out the following inspection, make certain that the connectors and terminals are properly connected.



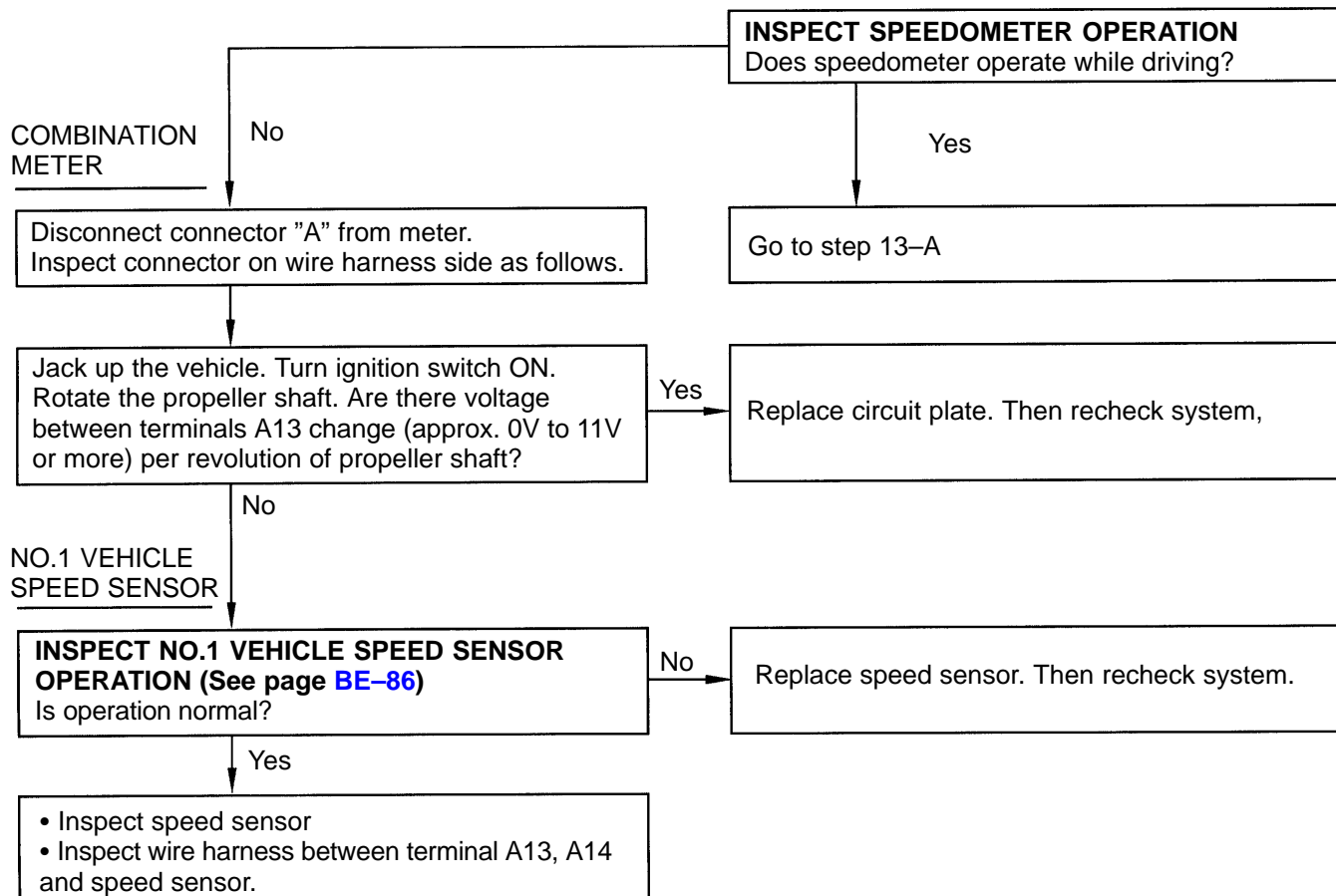
12	ENGINE COOLANT TEMPERATURE GAUGE	Does not operate or operation is abnormal.
----	---	---

HINT: While carrying out the following inspection, make certain that the connectors and terminals are properly connected.

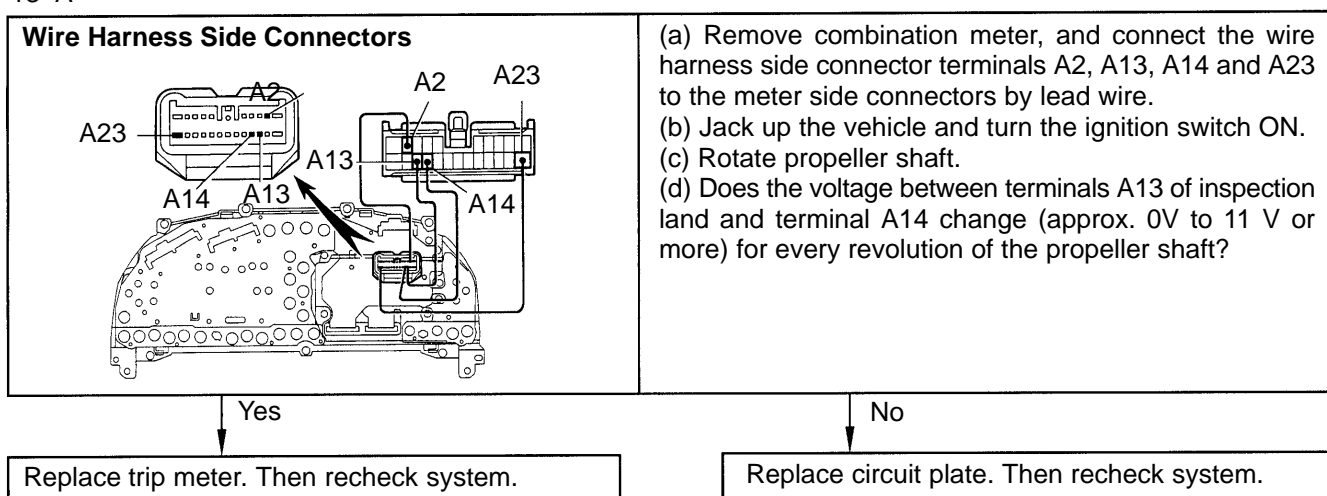


13	ODOMETER AND TWIN TRIP METER	Display does not alter during driving.
----	-------------------------------------	---

HINT: While carrying out the following inspection, make certain that the connectors and terminals are properly connected.

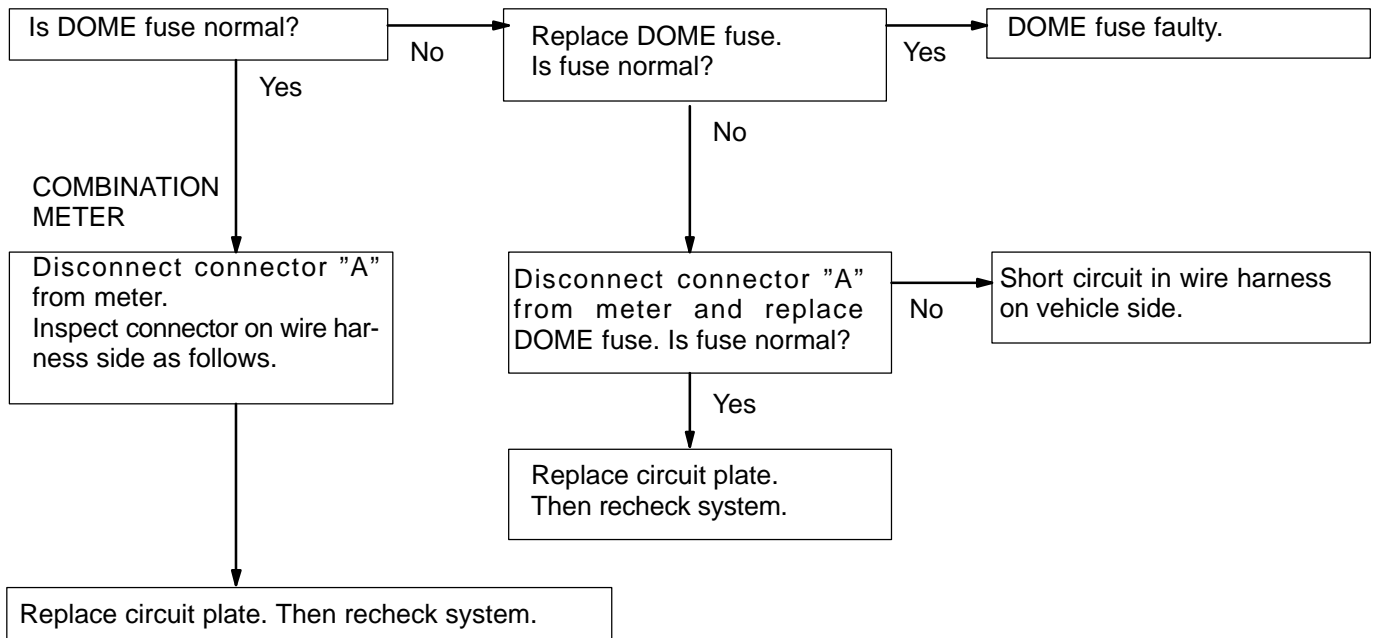


13-A



14	ODOMETER AND TWIN TRIP METER	Display is reset whenever ignition switch is turned off.
----	-------------------------------------	---

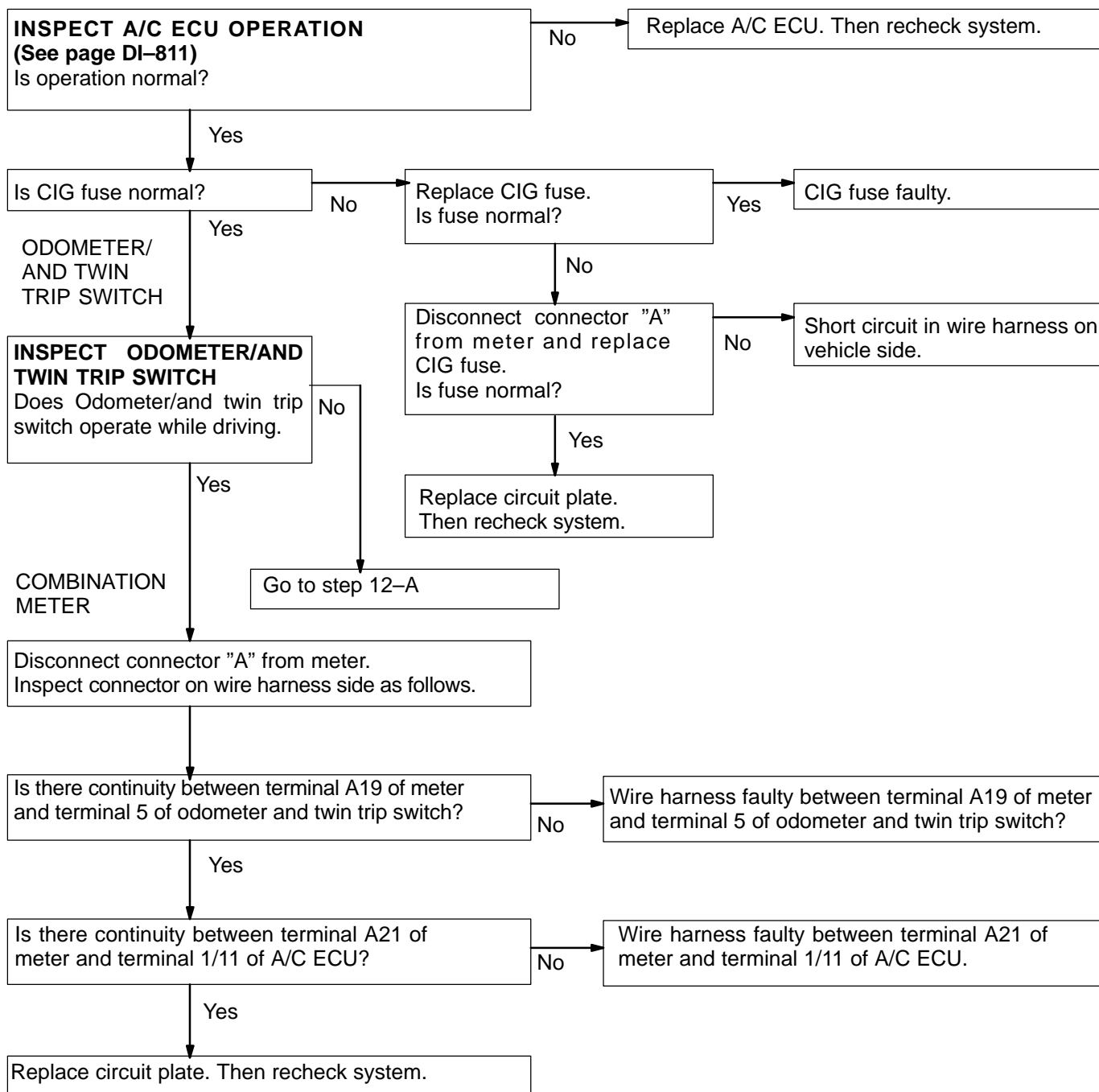
HINT: While carrying out the following inspection, make certain that connectors and terminals are properly connected.



15	OUTSIDE AIR TEMPERATURE	Abnormal display.
----	-------------------------	-------------------

HINT: While carrying out the following inspection, make certain that connectors and terminals are properly connected.

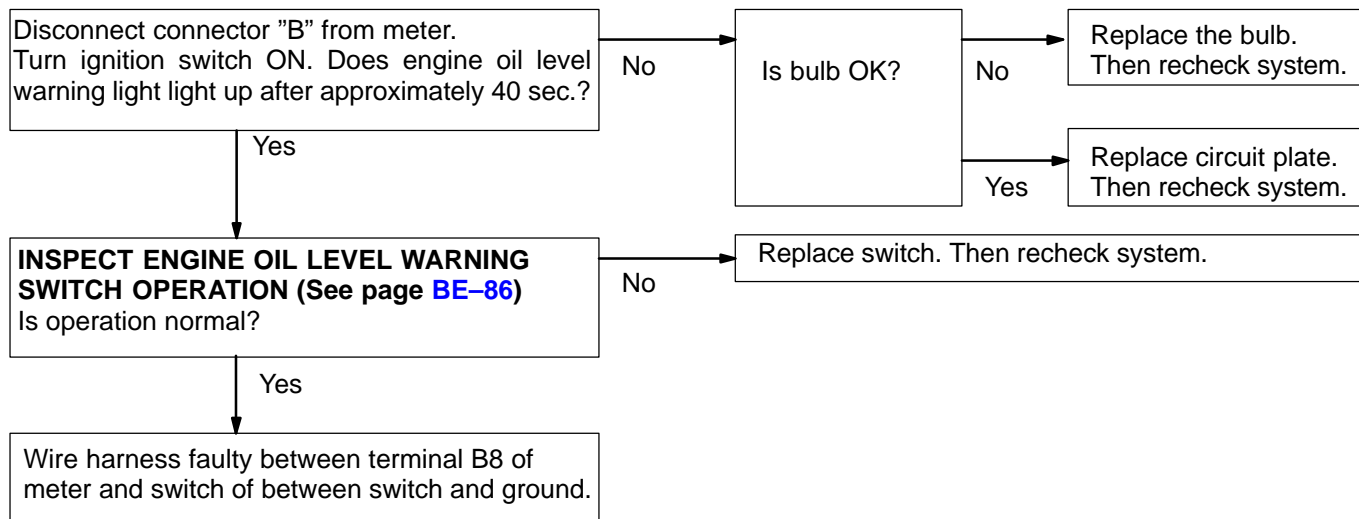
A/C ECU



16	ENGINE OIL LEVEL WARNING	Warning light does not light up.
----	---------------------------------	---

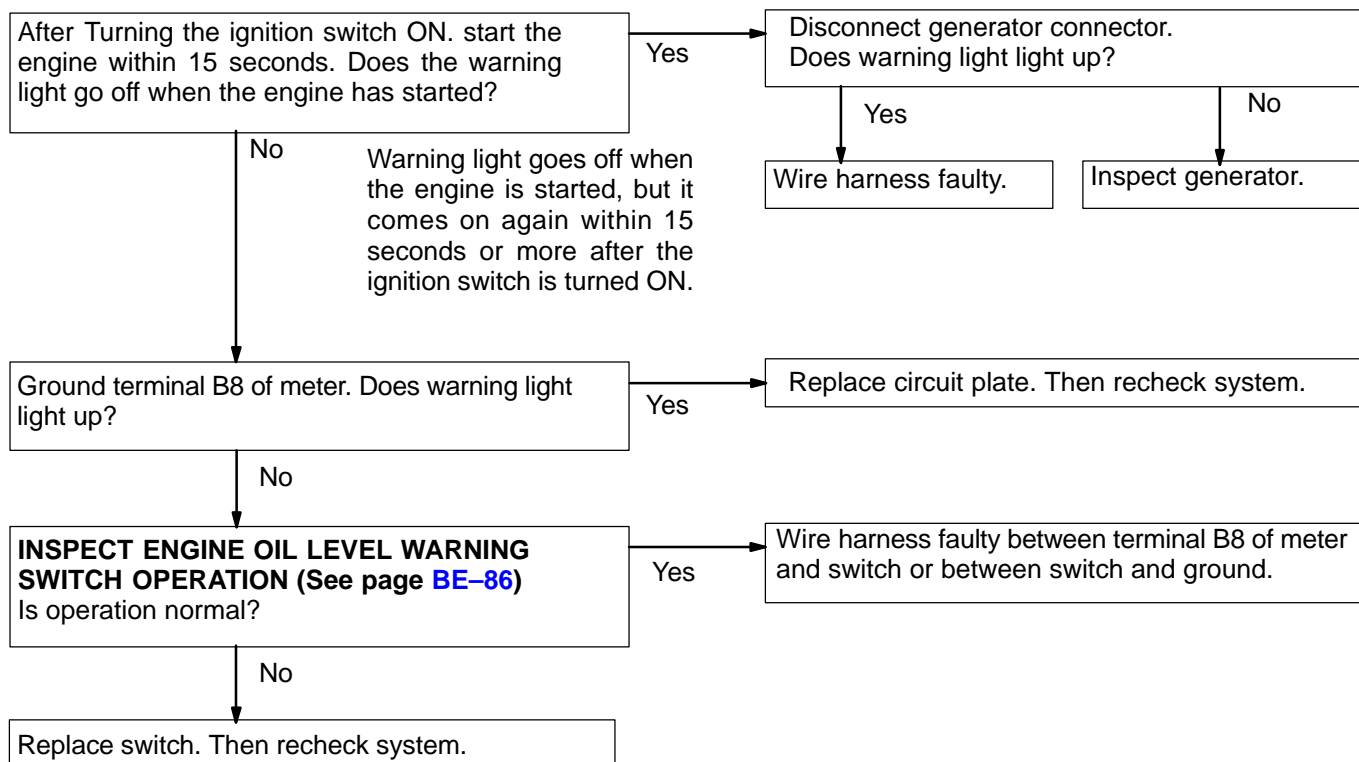
HINT: While carrying out the following inspection, make certain that connectors and terminals are properly connected.

COMBINATION
METER



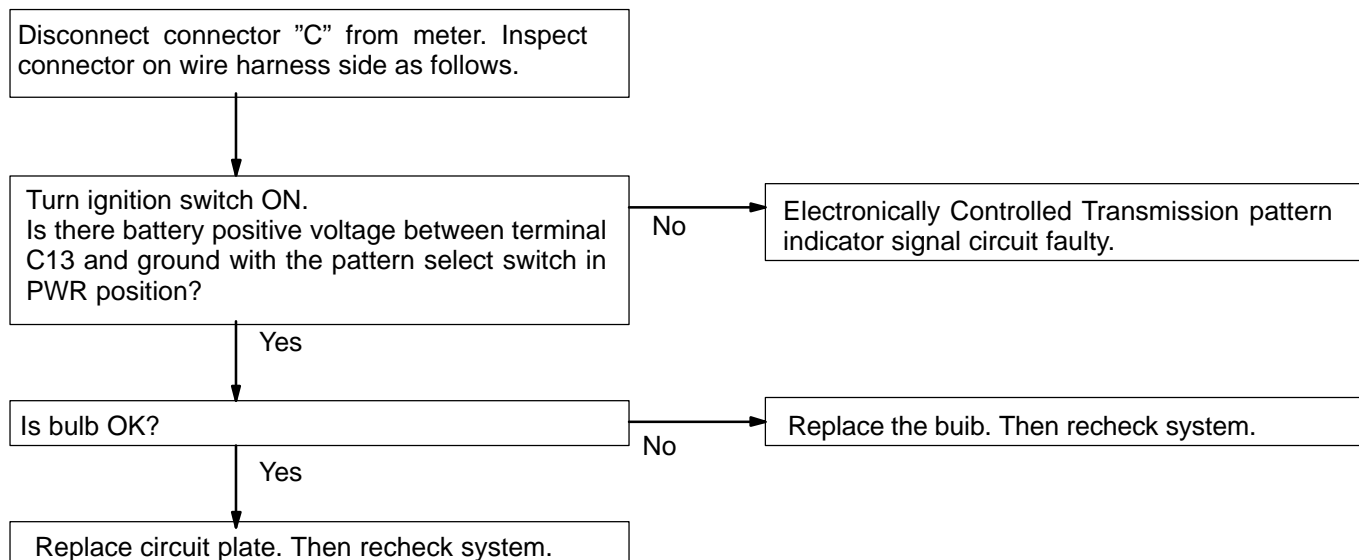
17	ENGINE OIL LEVEL WARNING	Warning light always light up.
----	---------------------------------	---------------------------------------

HINT: While carrying out the following inspection, make certain that connectors and terminals are properly connected.



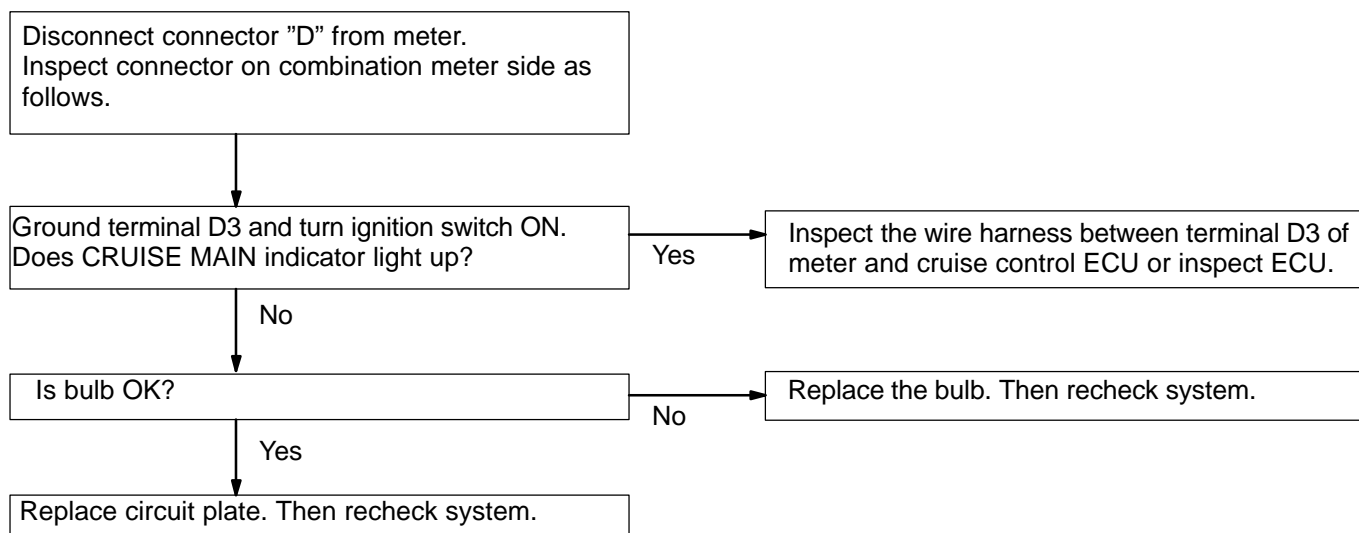
18	ELECTRONICALLY CONTROLLED TRANSMISSION PWR INDICATOR	Abnormal operation or indicator does not light up.
----	---	---

HINT: While carrying out the following inspection, make certain that connectors and terminals are properly connected.



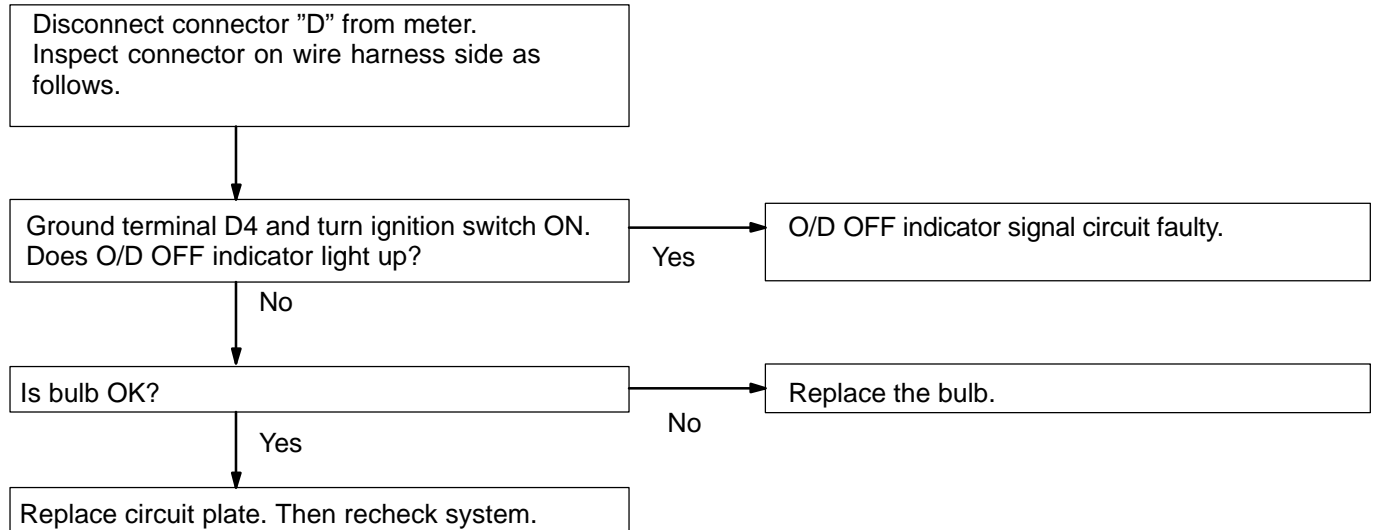
19	CRUISE MAIN INDICATOR	Abnormal operation or indicator does not light up.
----	------------------------------	---

HINT: While carrying out the following inspection, make certain that connectors and terminals are properly connected.



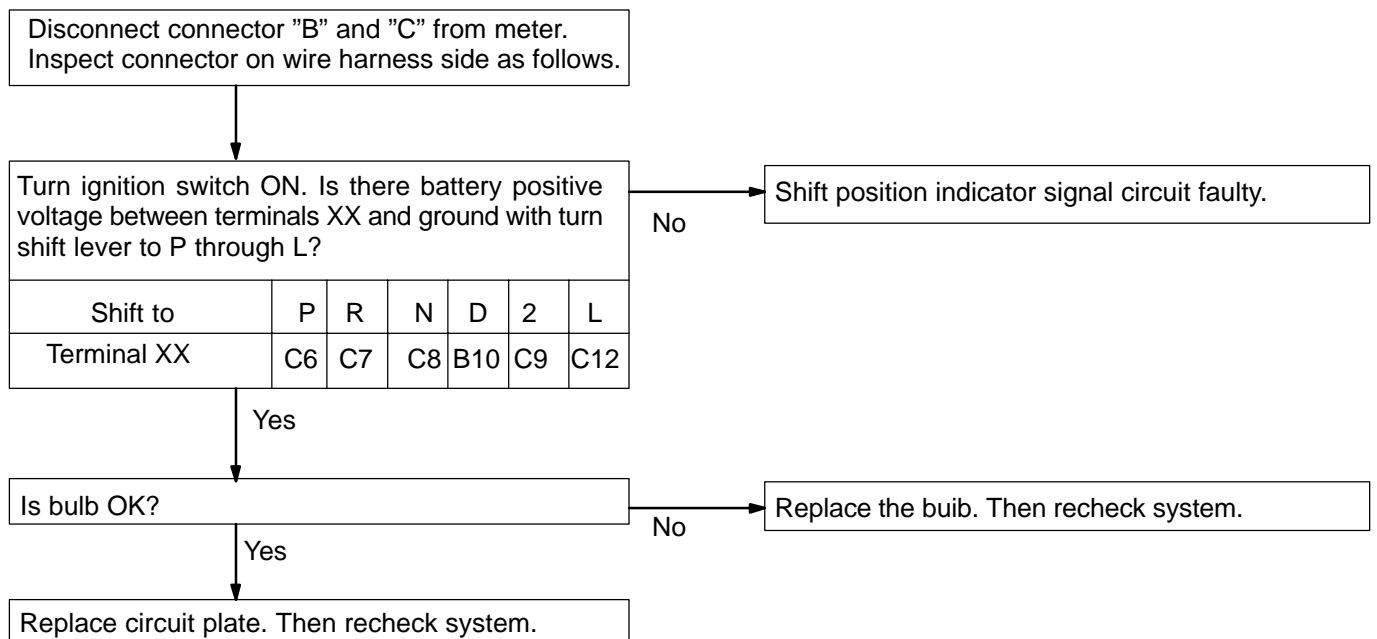
20	O/D OFF INDICATOR	Abnormal operation or indicator does not light up.
-----------	--------------------------	---

HINT: While carrying out the following inspection, make certain that connectors and terminals are properly connected.



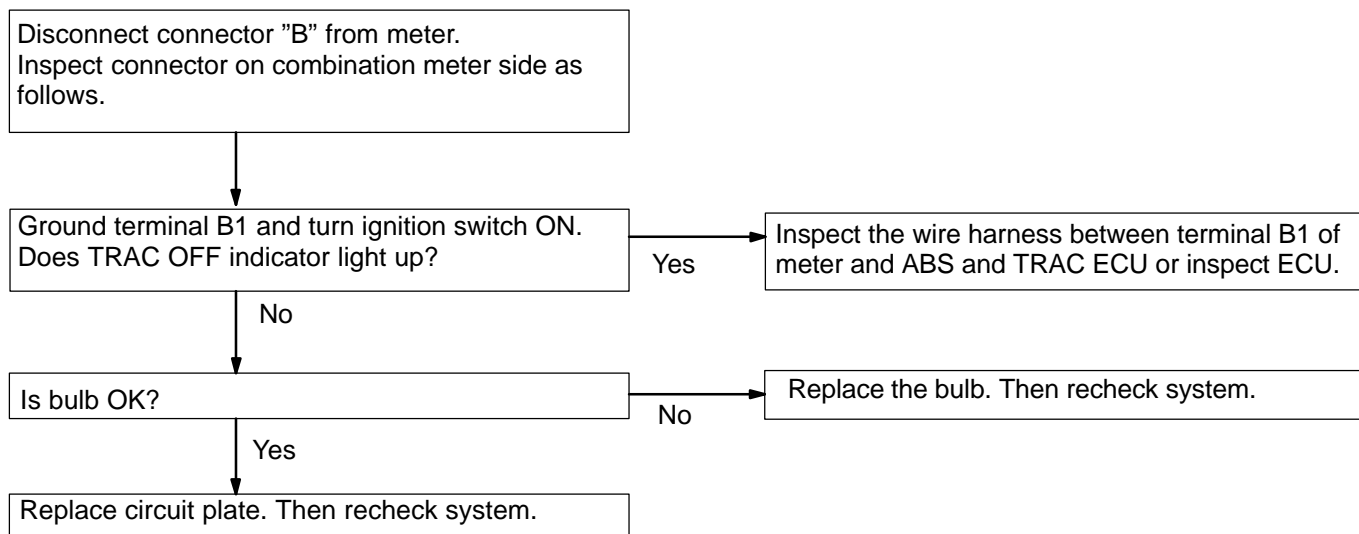
21	SHIFT POSITION INDICATOR	Abnormal operation or indicator does not light up.
-----------	---------------------------------	---

HINT: While carrying out the following inspection, make certain that connectors and terminals are properly connected.



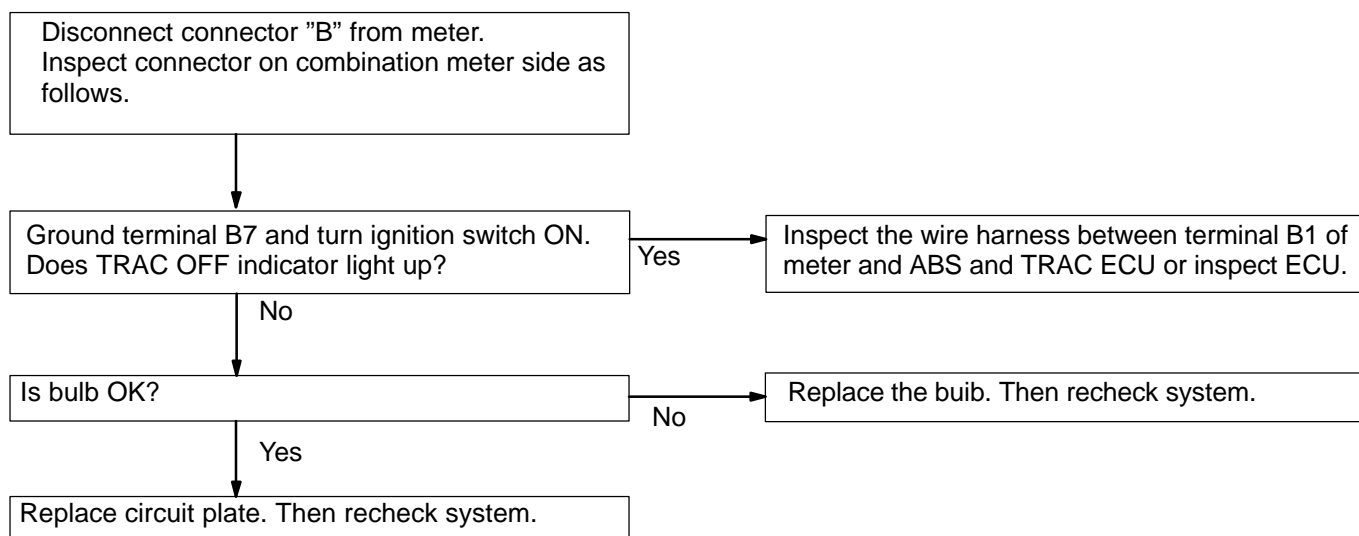
22	TRAC OFF INDICATOR	Abnormal operation or indicator does not light up.
----	--------------------	--

HINT: While carrying out the following inspection, make certain that connectors and terminals are properly connected.



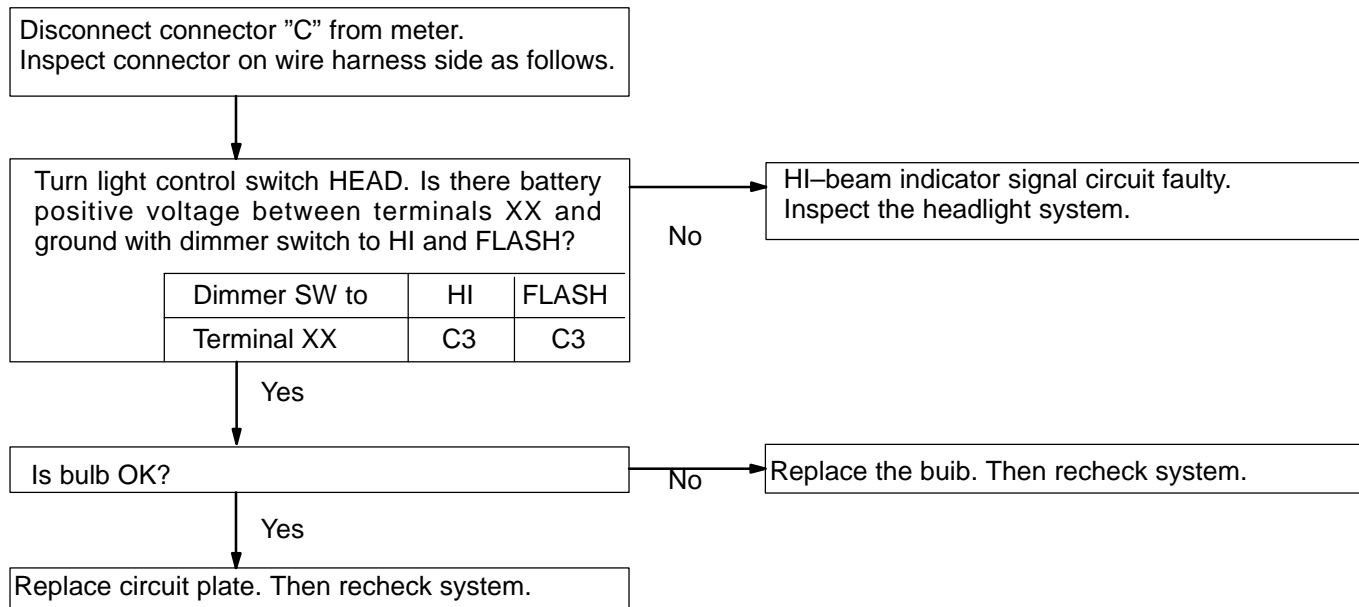
23	ABS WARNING	Abnormal operation or indicator does not light up.
----	-------------	--

HINT: While carrying out the following inspection, make certain that connectors and terminals are properly connected.



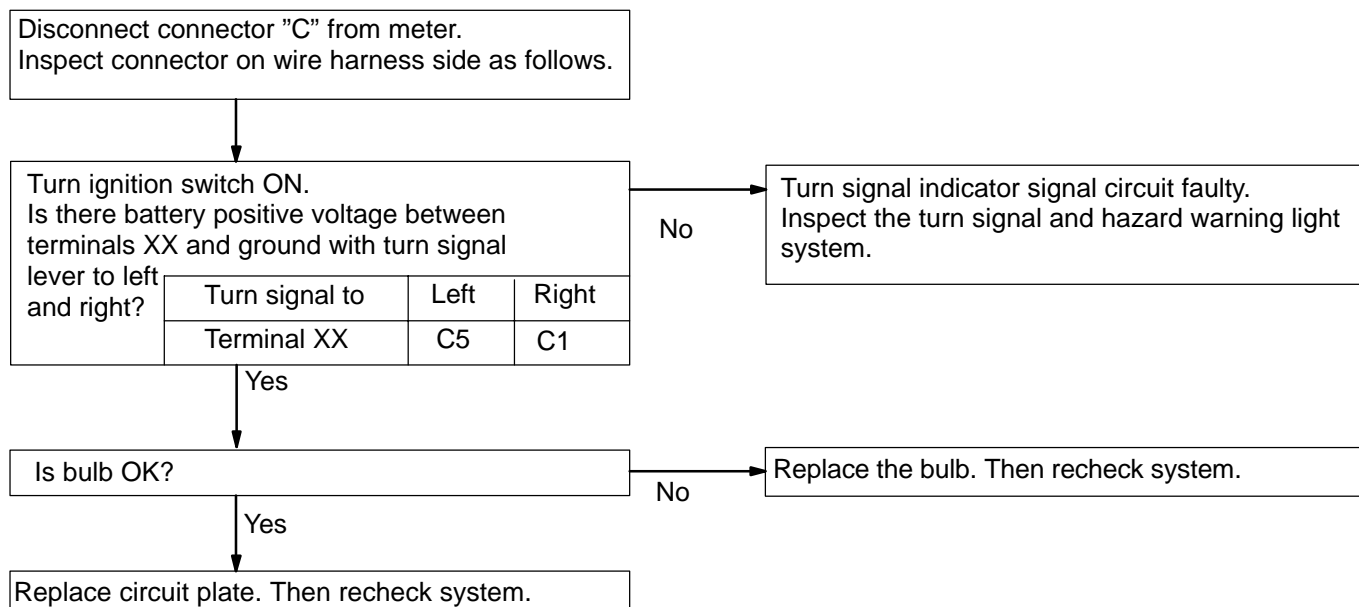
24	HIGH BEAM INDICATOR	Abnormal operation or indicator does not light up.
----	----------------------------	---

HINT: While carrying out the following inspection, make certain that connectors and terminals are properly connected.



25	TURN SIGNAL INDICATOR	Abnormal operation or indicator does not light up.
----	------------------------------	---

HINT: While carrying out the following inspection, make certain that connectors and terminals are properly connected.



26	WINDOW WASHER LEVEL WARNING SWITCH	Abnormal operation or indicator does not light up.
----	---	---

HINT: While carrying out the following inspection, make certain that connectors and terminals are properly connected.

