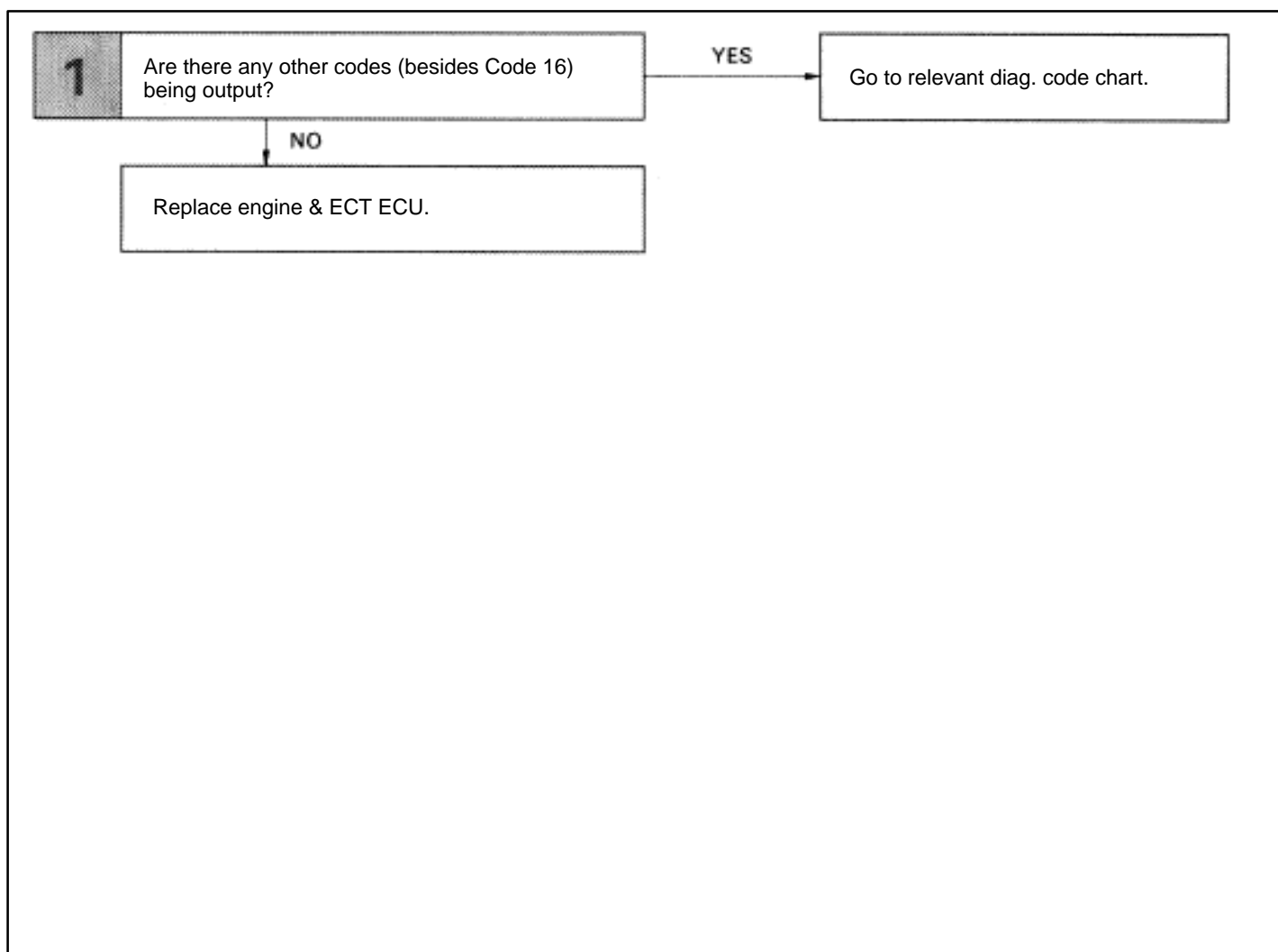


**Diag. Code 35****High Altitude Compensator Sensor (HAC Sensor) Circuit****— CIRCUIT DESCRIPTION —**

The HAC sensor is built into the ECU. This is a semiconductor pressure sensor with properties which cause its electrical resistance to change when stress is applied to the sensor's crystal (silicon) (piezoelectric effect). This sensor is used to detect the atmospheric (absolute) pressure and outputs corresponding electrical signals. Fluctuations in the air pressure cause changes in the intake air density, which can cause deviations in the air-fuel ratio. The signals from HAC sensor are used to make corrections for these fluctuations. If the ECU records diagnostic code "35", the fail safe function operates and the atmospheric pressure is set at a constant 760 mmHg.

Code No.	Diagnostic Code Detecting Condition	Trouble Area
35	Open or short detected in HAC sensor circuit for 0.5 sec. or more.	•ECU

**— DIAGNOSTIC CHART —**

—MEMO—