

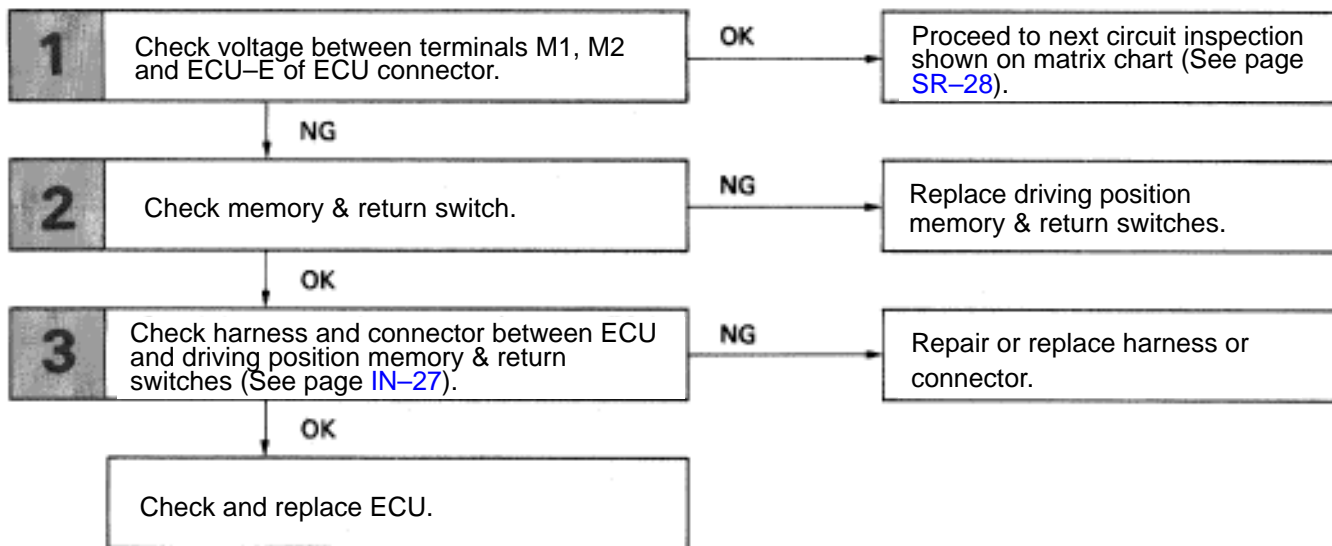
Memory & Return Switches Circuit

— CIRCUIT DESCRIPTION —

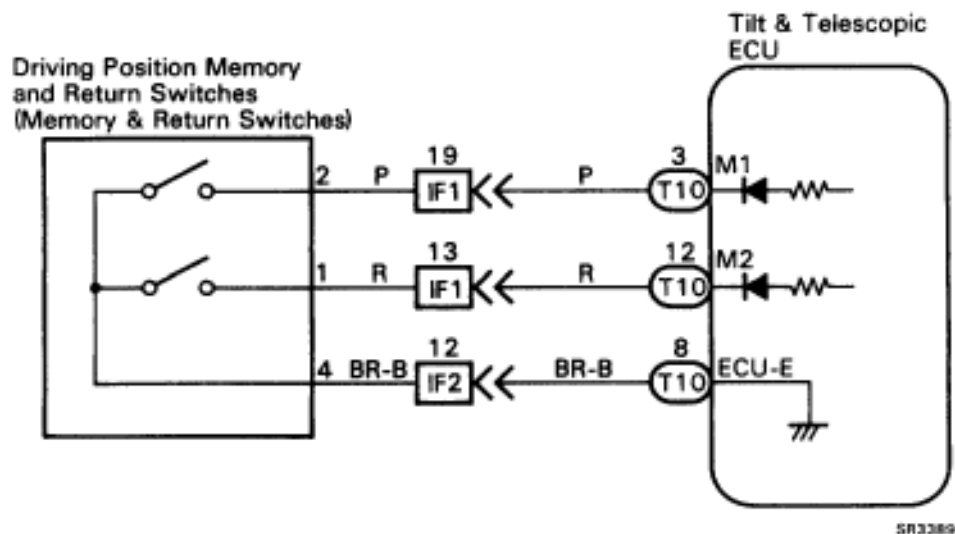
A memory command signal when switch 1 or 2 pushed while SET switch is being pushed ON or a return command signal when switch 1 or 2 is pushed ON is sent to the ECU for memory and return operations of the tilt, telescopic, seat and mirror.



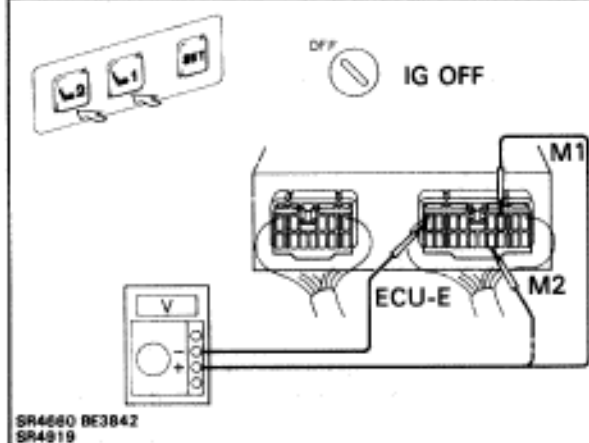
— DIAGNOSTIC CHART —



WIRING DIAGRAM



INSPECTION PROCEDURE

1 Check voltage between terminals M1, M2 and ECU-E of ECU connector.

P Remove ECU with connectors still connected.

C Measure voltage between terminals between M1, M2 and ECU-E of ECU connector when memory & return switches is on and off.

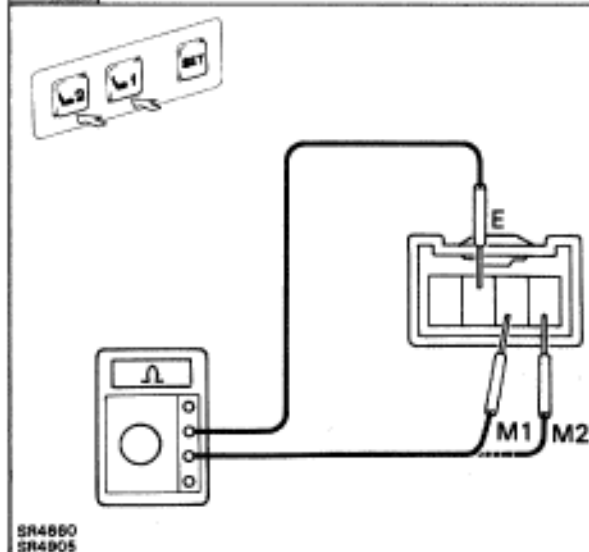
OK

Memory & Return Switches	Voltage
ON	Below 1 V
OFF	10 – 14 V

NG

OK

Proceed to next circuit inspection shown on matrix chart (See page [SR-28](#)).

2 Check Memory & return switches.

P Disconnect driving position memory & return switches connector.

C Measure resistance between terminals M2, M1 and E of driving position memory & return switches connector when memory & return switches is on and off.

OK

○—○ Continuity

Terminal	M1	M2	E
Switches			
Return SW1 ON	○—○	○—○	○—○
Return SW2 ON	○—○	○—○	○—○

OK

NG

Replace memory & return switches.

3 Check harness and connector between ECU and memory & return switches (see page [IN-27](#)).

OK

NG

Repair or replace harness or connector.

Check and replace ECU.