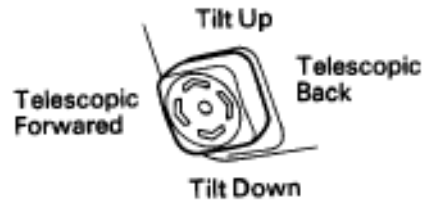


Manual Switch Circuit

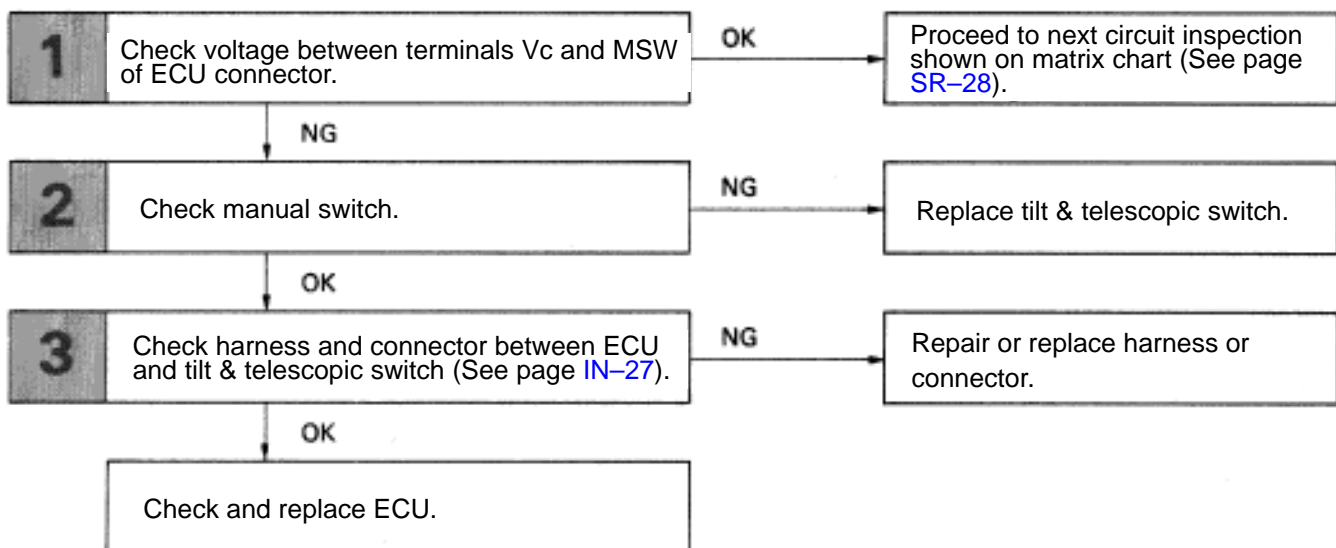
— CIRCUIT DESCRIPTION —

Operation of the switch sends different voltage signals to the ECU.

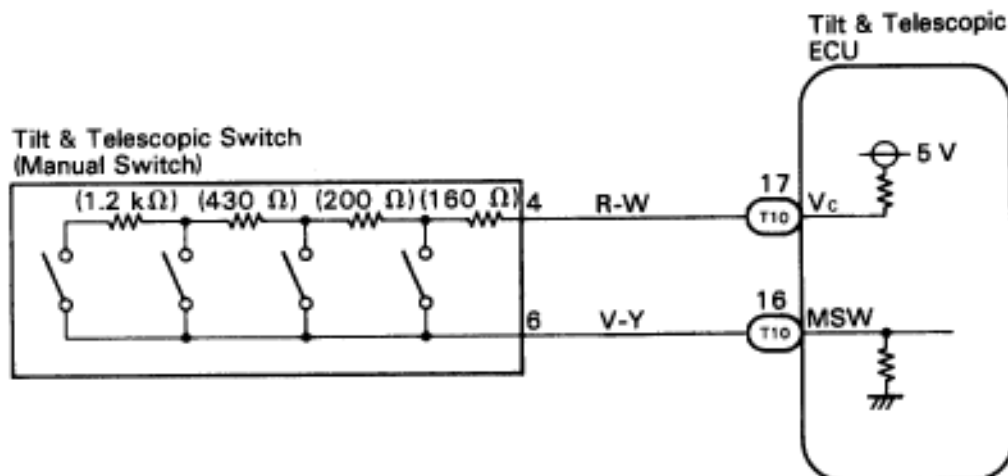


SR3578

— DIAGNOSTIC CHART —



WIRING DIAGRAM



SR4904

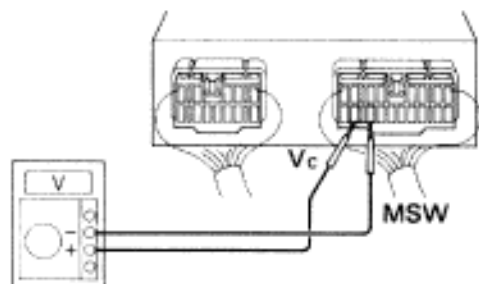
INSPECTION PROCEDURE

1

Check voltage between terminals Vc and MSW of ECU connector.



IG OFF

BE3042
SR4017**P**

Remove ECU with connectors still connected.

C

Measure voltage between terminal Vc and MSW of ECU connector when manual switch is operated.

OK

| Position | Voltage |
|--------------------|---------------|
| Telescopic back | Approx. 2.6 V |
| Tilt up | Approx. 3.5 V |
| Telescopic forward | Approx. 4.2 V |
| Tilt down | Approx. 4.6 V |

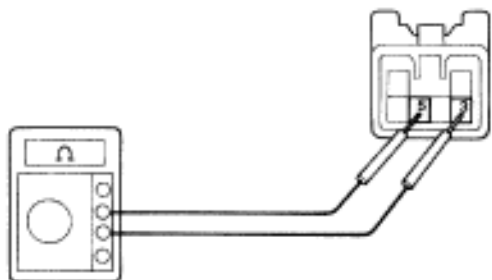
NG

OK

Proceed to next circuit inspection shown on matrix chart (See page [SR-28](#)).

2

Check manual switch.



SR3422

P

Disconnect combination switch connector.

C

Measure resistance between terminal 3 and 5 of combination switch connector when manual switch operated.

OK

| Position | Resistance |
|--------------------|-----------------------|
| Telescopic back | Approx. 160 Ω |
| Tilt up | Approx. 360 Ω |
| Telescopic forward | Approx. 790 Ω |
| Tilt down | Approx. 1990 Ω |

OK

NG

Replace tilt & telescopic switch.

3

Check harness and connector between ECU and tilt & telescopic switch (see page [IN-27](#)).

OK

NG

Replace tilt & telescopic switch.

Check and replace ECU.