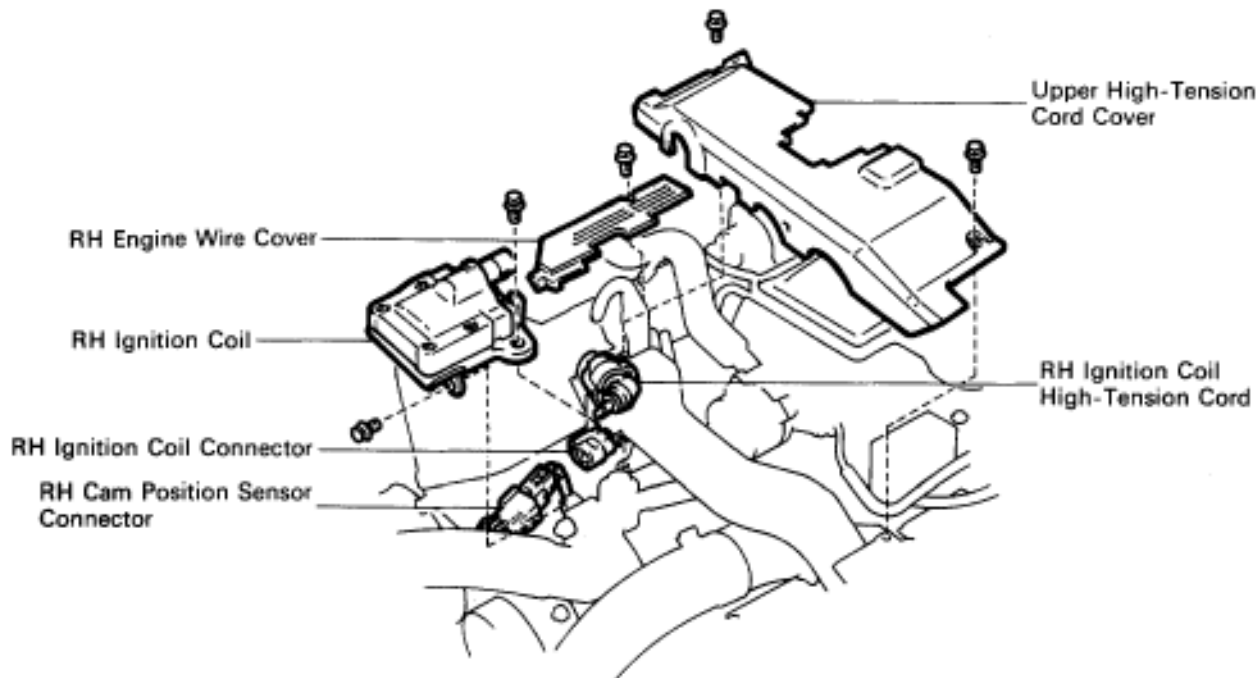


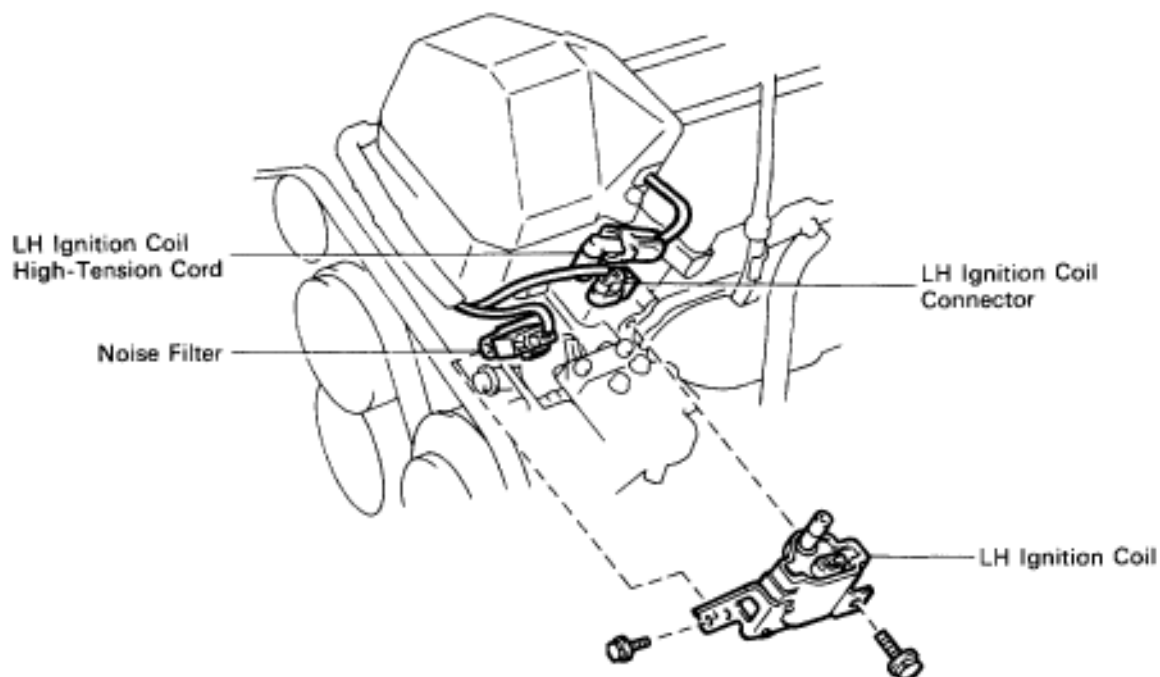
IGNITION COILS COMPONENTS FOR REMOVAL AND INSTALLATION

RH Ignition Coil



P01327

LH Ignition Coil

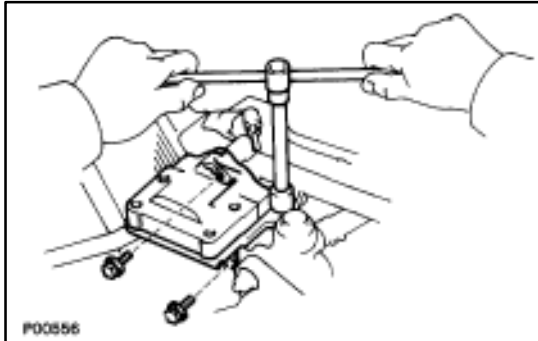


P01423

REMOVAL OF RH IGNITION COIL

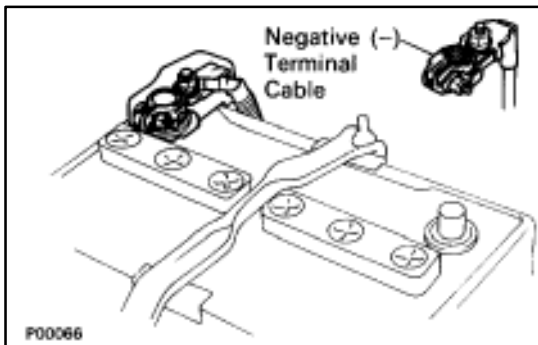
(See Components on page IG-20)

1. REMOVE RH ENGINE WIRE COVER
(See steps 1, 3 and 4 on pages IG-11 and 12)
2. DISCONNECT HIGH-TENSION CORD
(See step 9 on pages IG-13 and 14)
3. DISCONNECT IGNITION COIL CONNECTOR



4. REMOVE IGNITION COIL

- (a) Remove the three bolts, and disconnect the ignition coil.
- (b) Disconnect the cam position sensor connector, and remove the ignition coil.

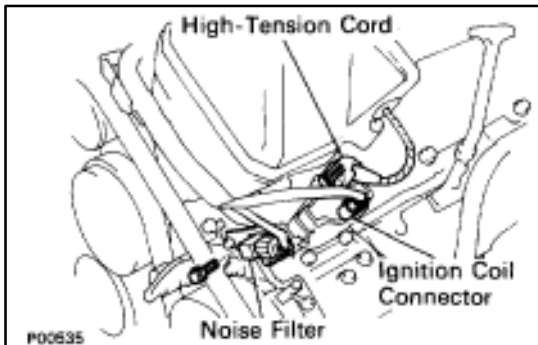


REMOVAL OF LH IGNITION COIL

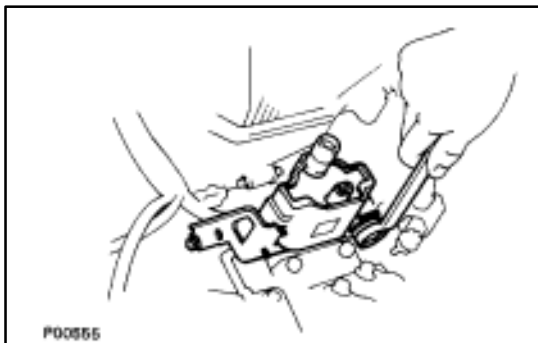
(See Components on page IG-20)

1. DISCONNECT CABLE FROM NEGATIVE TERMINAL OF BATTERY

CAUTION: Work must be started after approx. 20 seconds or longer from the time the ignition switch is turned to the "LOCK" position and the negative (-) terminal cable is disconnected from the battery.

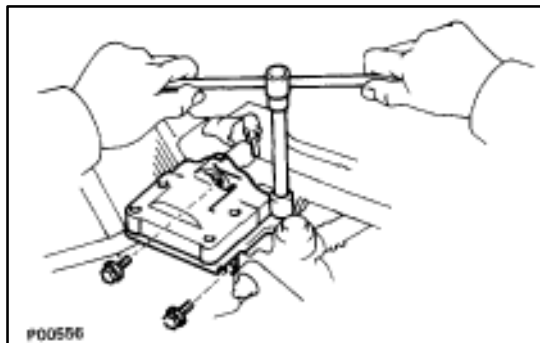


2. DISCONNECT IGNITION COIL CONNECTOR
3. DISCONNECT HIGH-TENSION CORD
(See step 9 on pages IG-13 and 14)
4. DISCONNECT NOISE FILTER FROM IGNITION COIL
Remove the bolt, and disconnect the noise filter.



5. REMOVE IGNITION COIL

Remove the two bolts and ignition coil.



INSTALLATION OF RH IGNITION COIL

(See Components on page IG-20)

1. INSTALL IGNITION COIL

- (a) Install the ignition coil with the three bolts.

- (b) Install the cam position sensor connector to the ignition coil bracket.

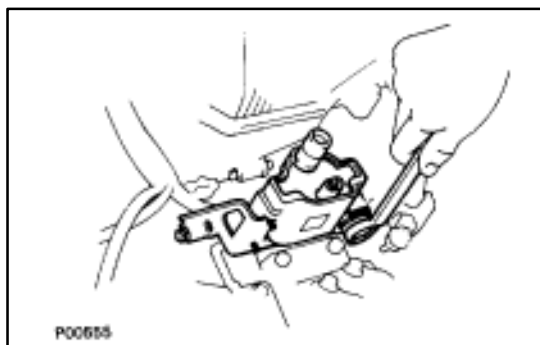
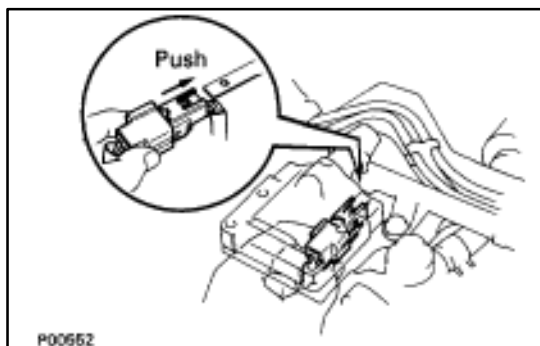
2. CONNECT IGNITION COIL CONNECTOR

3. CONNECT HIGH-TENSION CORD

(See step 4 on pages IG-16 and 17)

4. INSTALL RH ENGINE WIRE COVER

(See steps 8, 10, 12 and 13 on pages IG-11 and 12)



INSTALLATION OF LH IGNITION COIL

(See Components on page IG-20)

1. INSTALL IGNITION COIL

Install the ignition coil with the two bolts.

2. INSTALL NOISE FILTER TO IGNITION COIL

Install the noise filter with the bolt.

3. CONNECT HIGH-TENSION CORD

(See step 4 on pages IG-16 and 17)

4. CONNECT IGNITION COIL CONNECTOR

5. CONNECT CABLE TO NEGATIVE TERMINAL OF BATTERY

