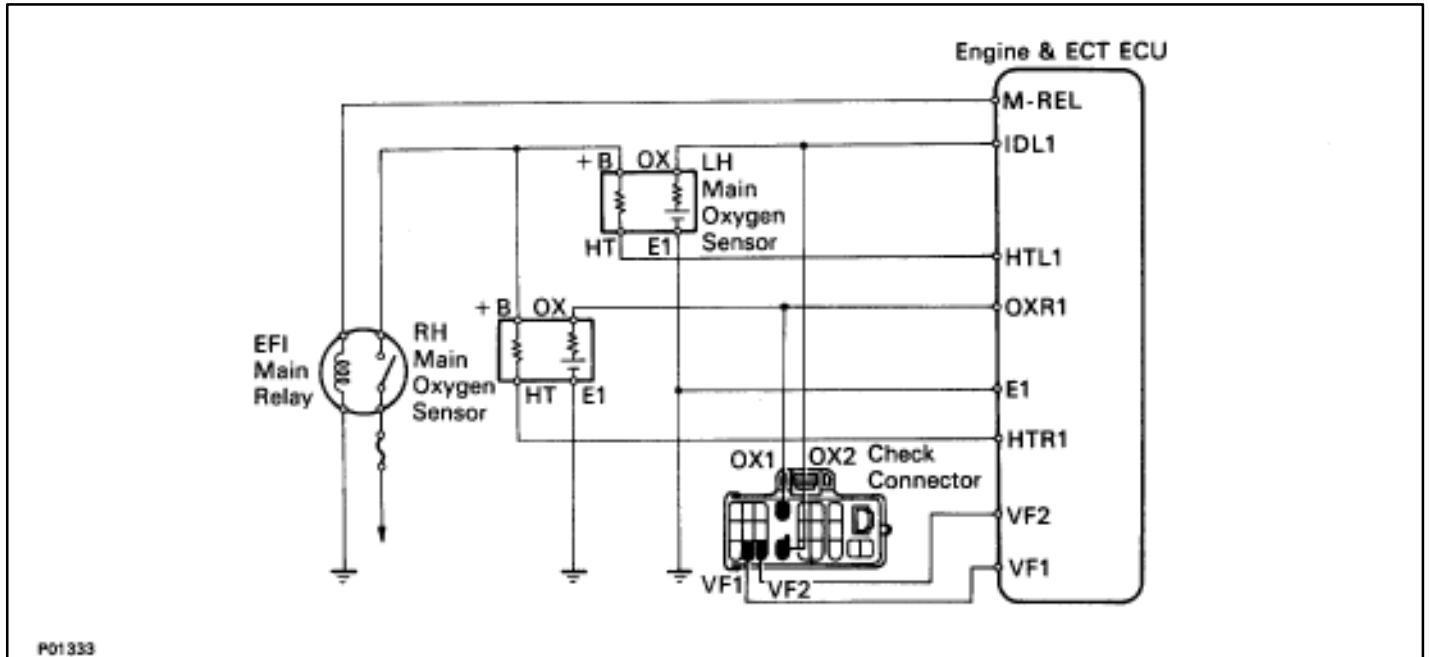


Main Oxygen Sensors



P01333

INSPECTION OF MAIN OXYGEN SENSORS

1. WARM UP ENGINE

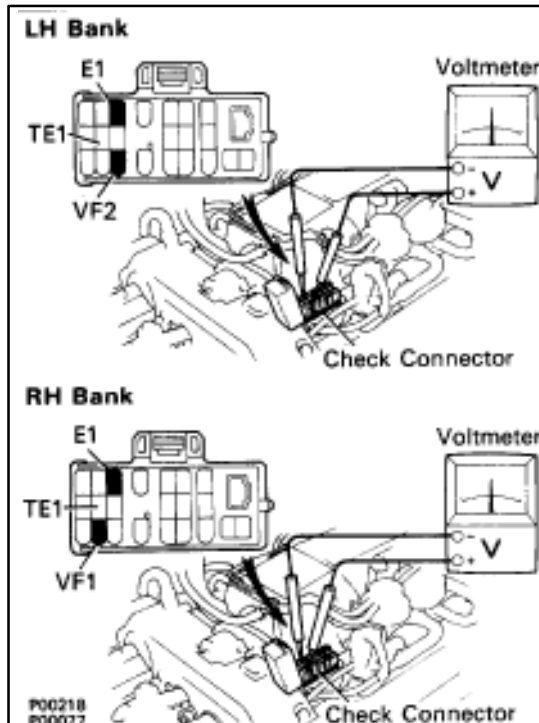
Allow the engine to warm up to normal operating temperature.

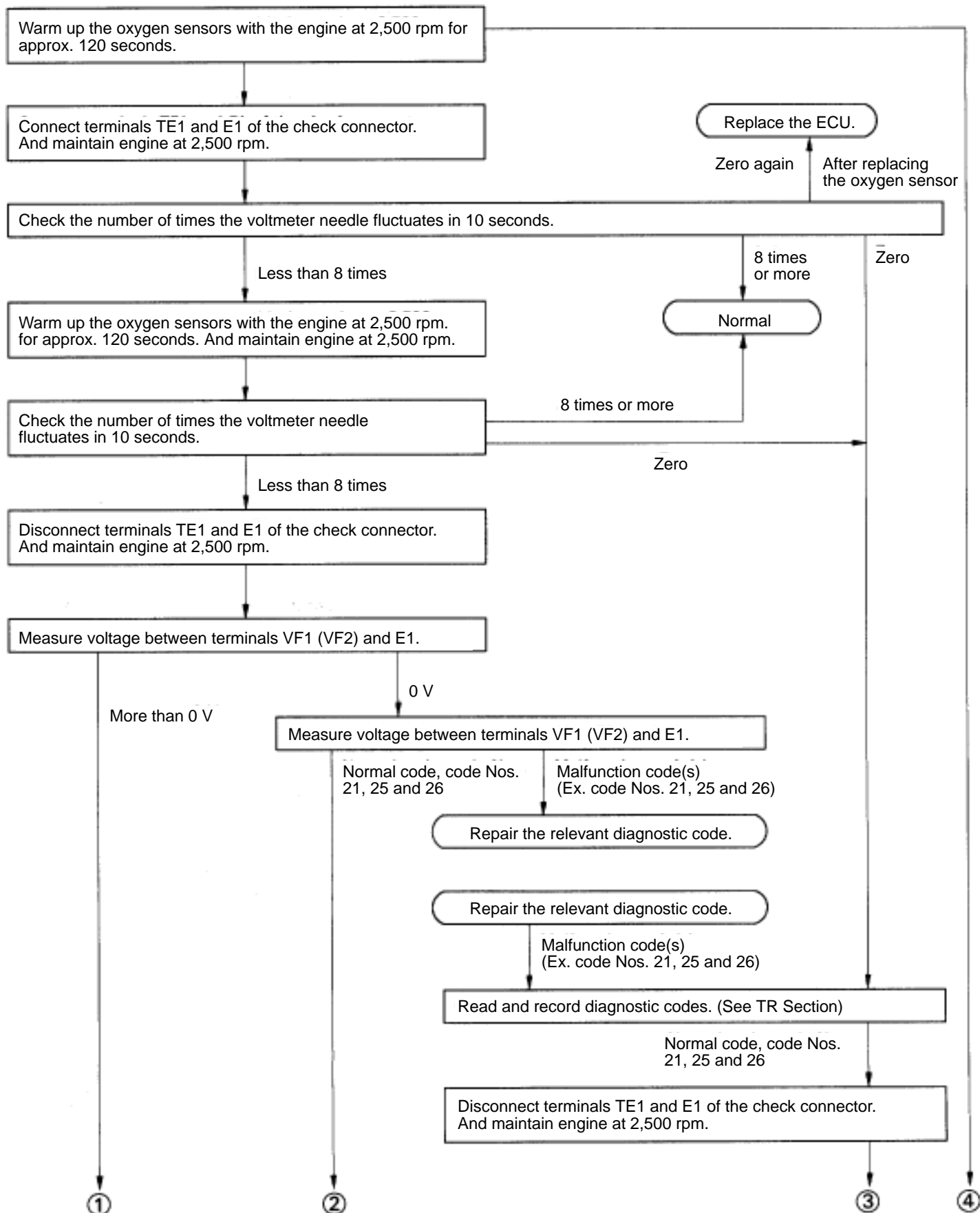
2. INSPECT FEEDBACK VOLTAGE

Connect the positive (+) probe of a voltmeter to terminal VF1 (for LH bank) or VF2 (for RH bank) of the check ("DIAGNOSIS") connector, and negative (-) probe to terminal E1. Perform the test as follows described on the next page.

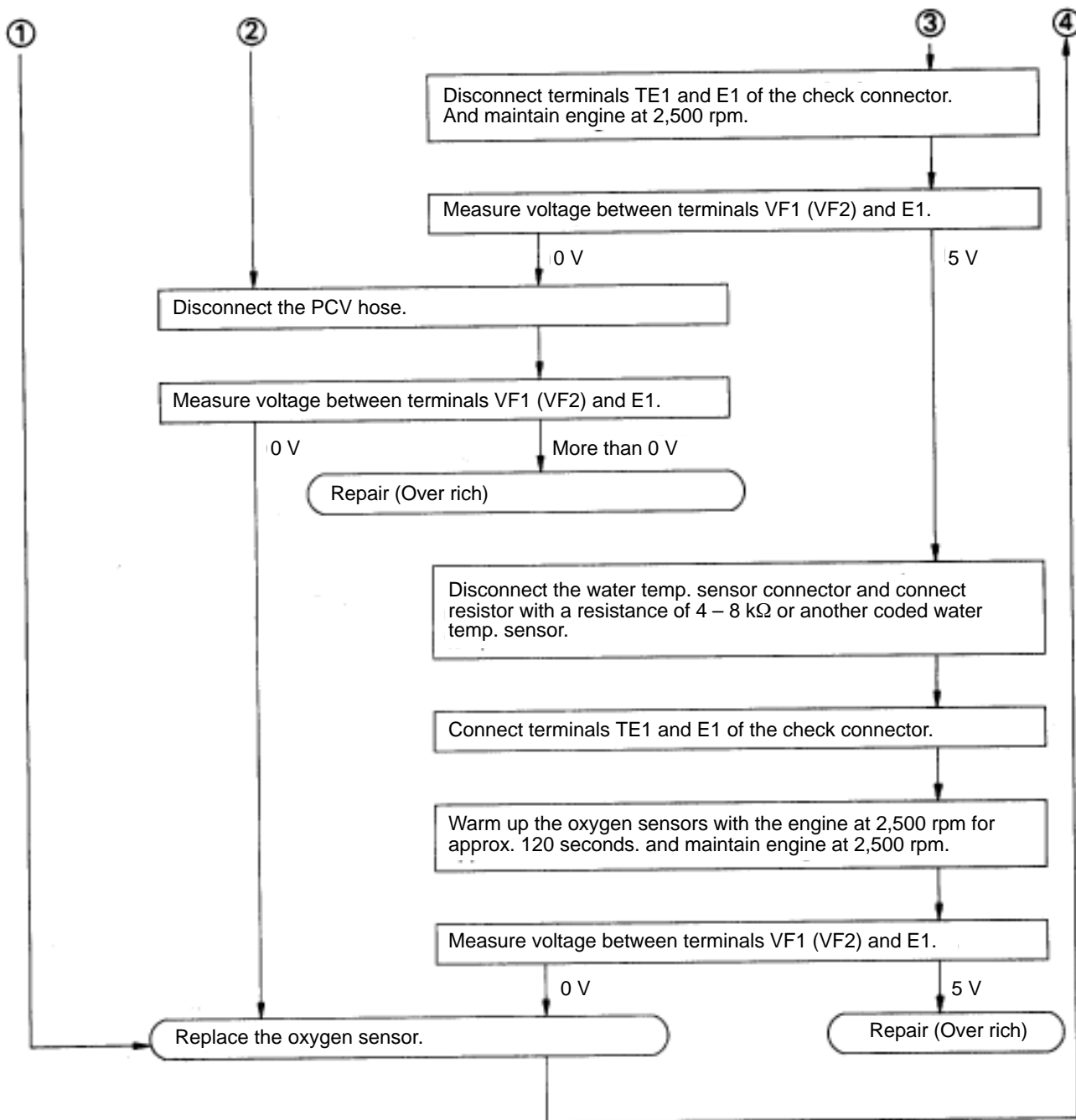
HINT: Use SST when connecting between terminals TE1 and E1 of the check connector.

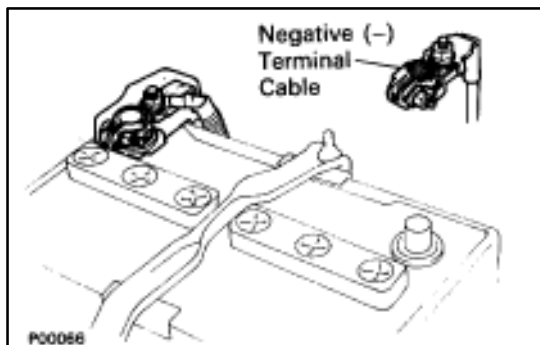
SST 09843-18020

P00218
P00077



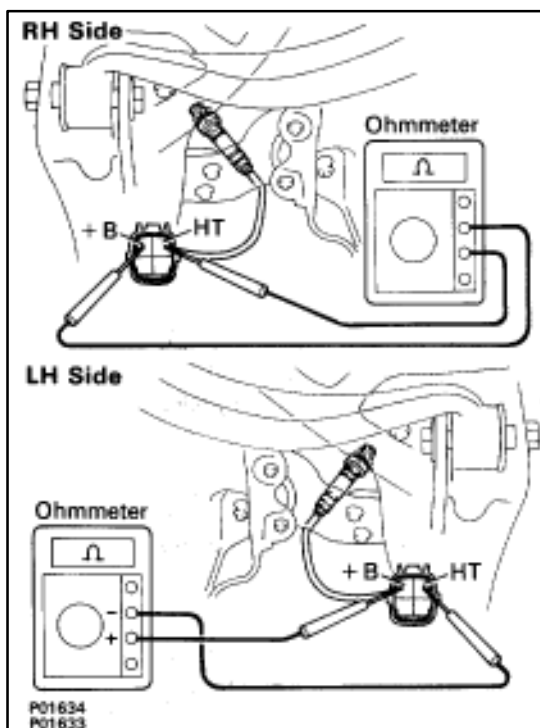
CONTINUED FROM PAGE FI-114





3. DISCONNECT CABLE FROM NEGATIVE TERMINAL OF BATTERY

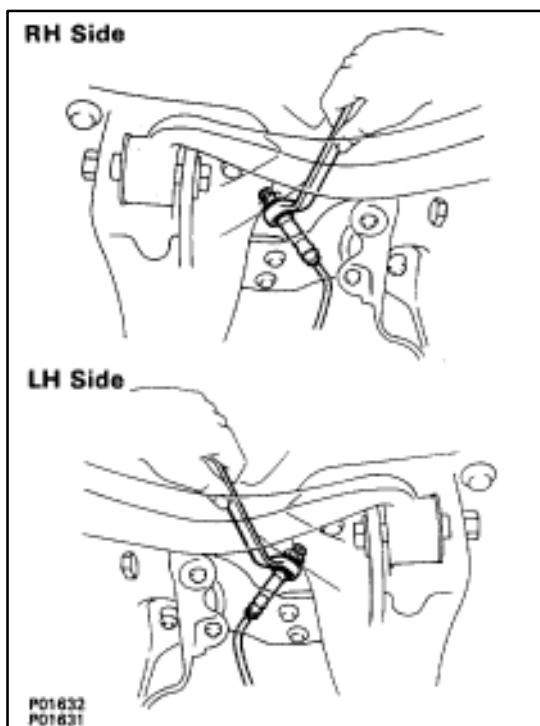
CAUTION: Work must be started after approx. 20 seconds or longer from the time the ignition switch is turned to the "LOCK" position and the negative (-) terminal cable is disconnected from the battery.



4. INSPECT HEATER RESISTANCE OF MAIN OXYGEN SENSORS

- Disconnect the oxygen sensor connectors.
- Using an ohmmeter, measure the resistance between the terminals +B and HT.

Resistance: 5.1–6.3 Ω at 20°C (68°F)



If the resistance is not as specified, replace the sensor.

Torque: 44 N·m (450 kgf·cm, 33 ft·lbf)

- Reconnect the oxygen sensor connectors.

5. RECONNECT CABLE TO NEGATIVE TERMINAL OF BATTERY