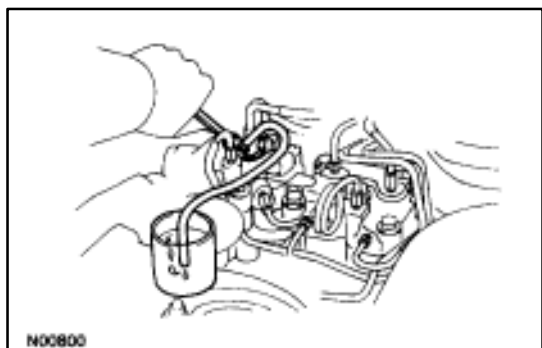
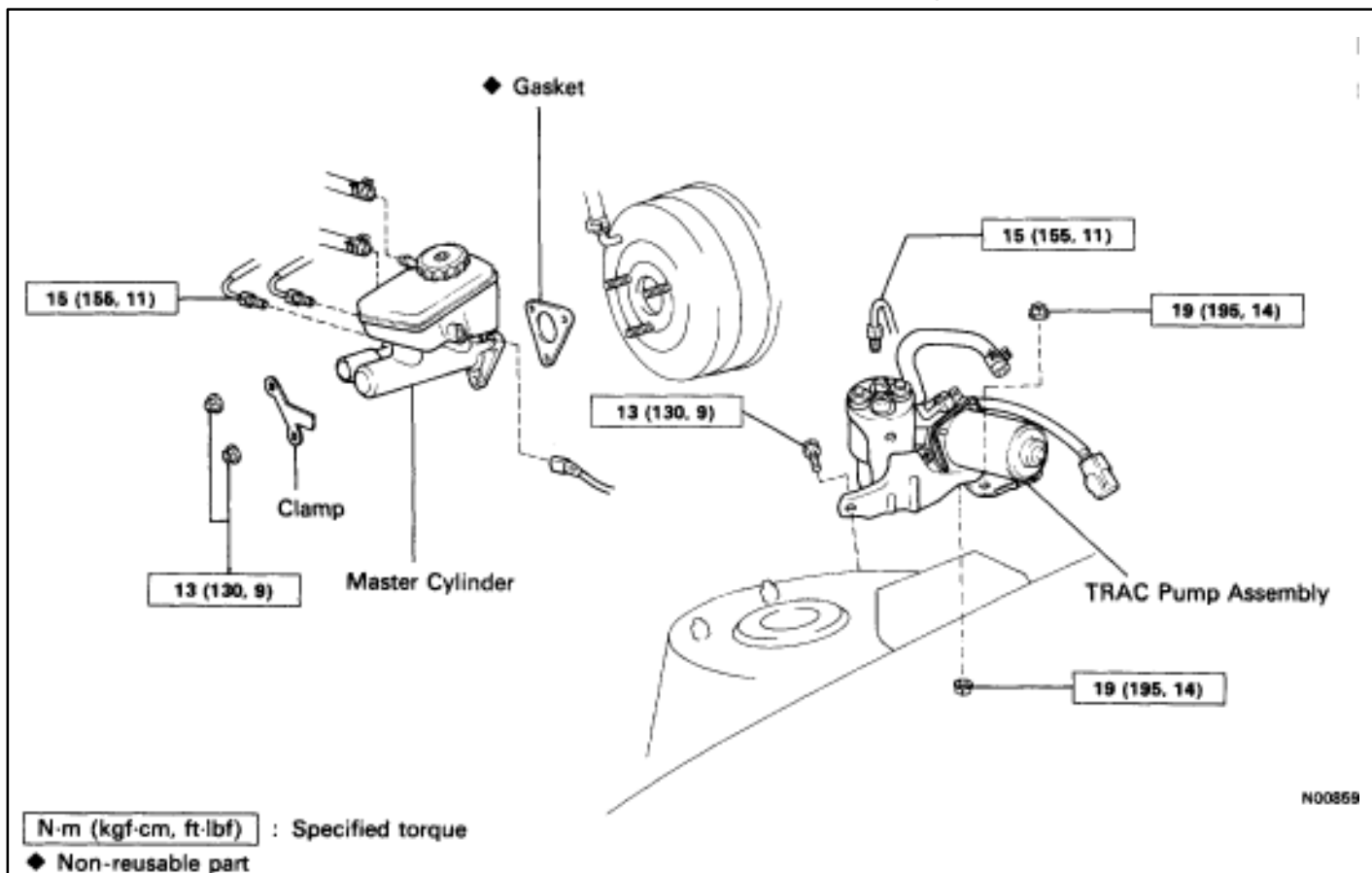


TRAC PUMP ASSEMBLY REMOVAL AND INSTALLATION OF TRAC PUMP ASSEMBLY

Remove and install the part as shown.



(MAIN POINTS OF REMOVAL AND INSTALLATION)

1. DRAIN OUT HIGH PRESSURE FLUID

- Connect a vinyl tube to the TRAC actuator bleeder plug, then loosen the bleeder plug.
- When the fluid has flowed out, tighten the bleeder plug.

CAUTION: Since the fluid is under high pressure, it could spray out with great force, so be careful.

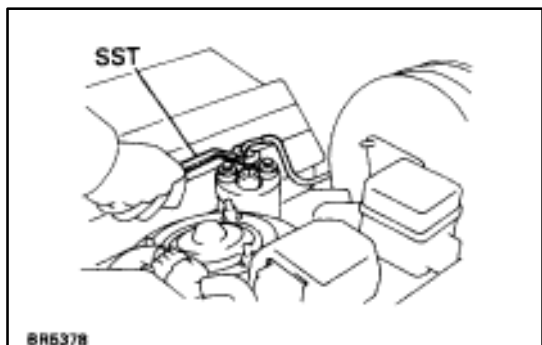
2. DISCONNECT AND CONNECT BRAKE TUBE

Using SST, disconnect and connect the brake tube from/ to the accumulator.

SST 09751-36011

Torque: 15 N·m (155 kgf-cm, 11 ft-lbf)

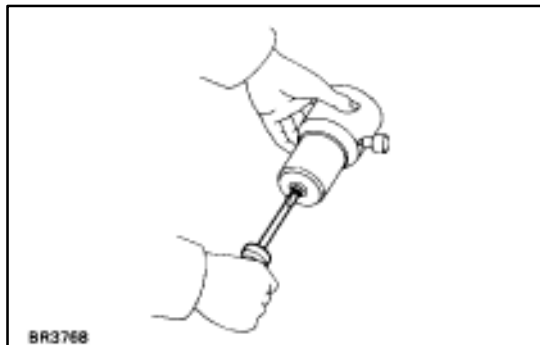
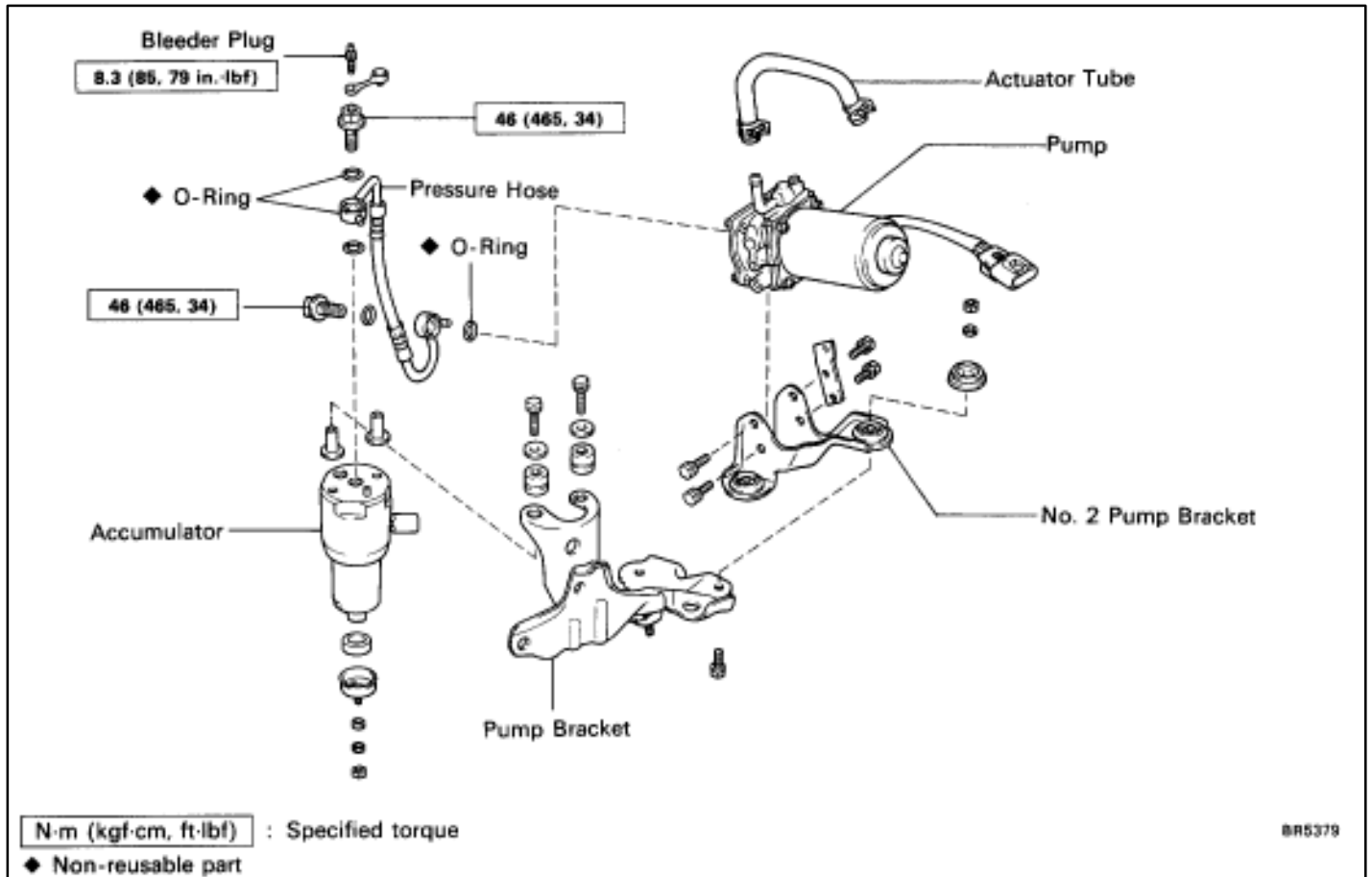
3. BLEED BRAKE SYSTEM AND TRAC SYSTEM (See pages [BR-6](#) and 8)



DISASSEMBLY AND ASSEMBLY OF TRACTION PUMP ASSEMBLY

Remove and install the parts as shown.

COMPONENTS



(MAIN POINT) DISPOSAL METHOD OF TRAC ACCUMULATOR

- Loosen the gas plug about two turns to a position where the gas can leak out.
- After confirming that all the gas has been drained out, remove the gas plug and dispose of the accumulator.

HINT: If the gas does not leak out even after the gas plug has been loosened two turns, repeat the operation, turning the gas plug a half turn to the left or right.