

CIRCUIT INSPECTION

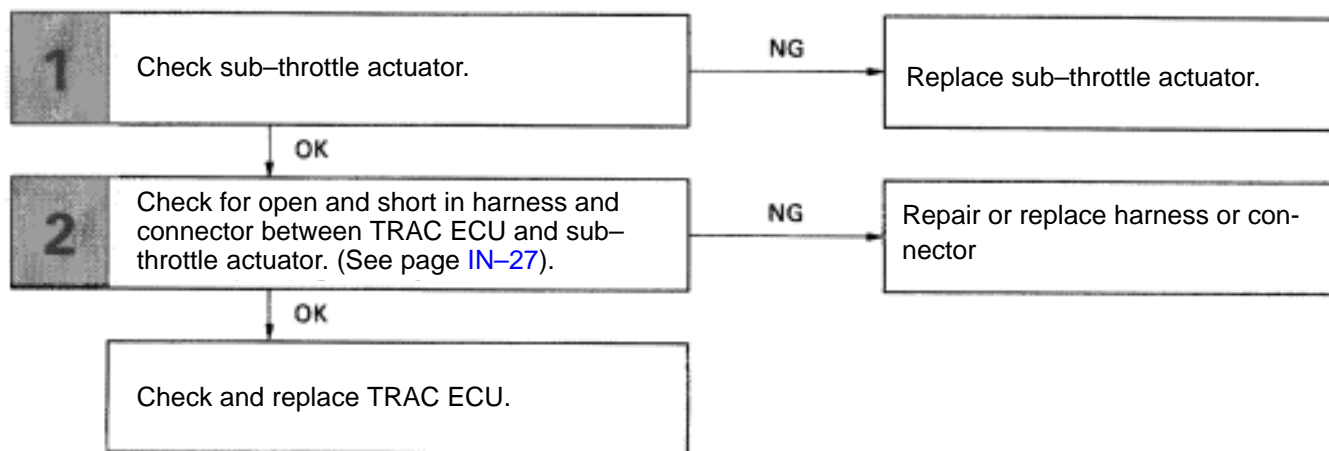
Diag. Code 24 TRAC Sub-Throttle Actuator Circuit

— CIRCUIT DESCRIPTION —

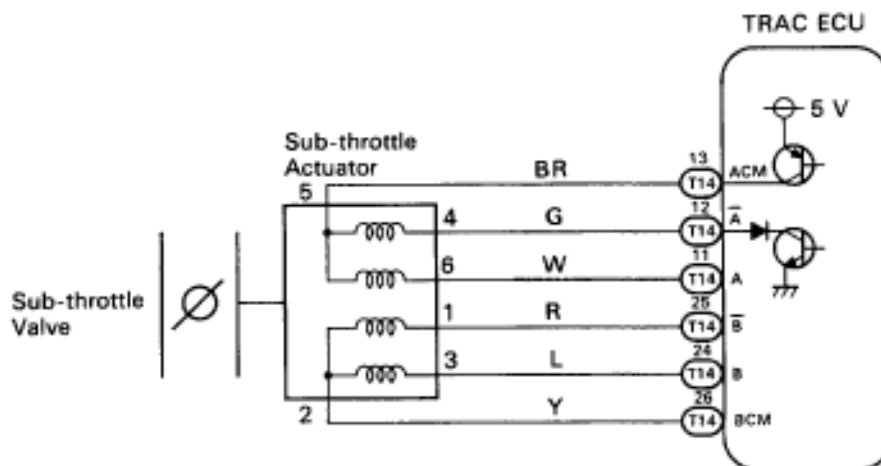
The sub-throttle actuator operates in accordance with signals from the ECU, controlling the opening and closing of the sub-throttle valve.

Code No.	Diagnostic Code Detecting Condition	Trouble Area
24	Open or short in sub-throttle actuator circuit.	<ul style="list-style-type: none"> •Sub-throttle actuator. •Open or short in sub-throttle actuator circuit. •ECU

— DIAGNOSTIC CHART —



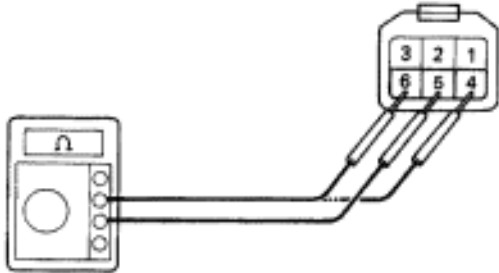
WIRING DIAGRAM



INSPECTION PROCEDURE

1

Check sub-throttle actuator.



The illustration shows checking for continuity between 4-5, and 5-6.

BR3914

P

Disconnect sub-throttle actuator connector.

C

Check continuity between each terminal of sub-throttle actuator connector shown below.

OK

Terminals 1 and 2	Continuity (Reference value 1.1 Ω)
Terminals 2 and 3	
Terminals 4 and 5	
Terminals 5 and 6	

OK**NG**

Replace sub-throttle actuator.

2

Check for open and short in harness and connector between TRAC ECU and sub-throttle actuator. (See page [IN-27](#)).

OK**NG**

Repair or replace harness or connector.

Check and replace TRAC ECU.