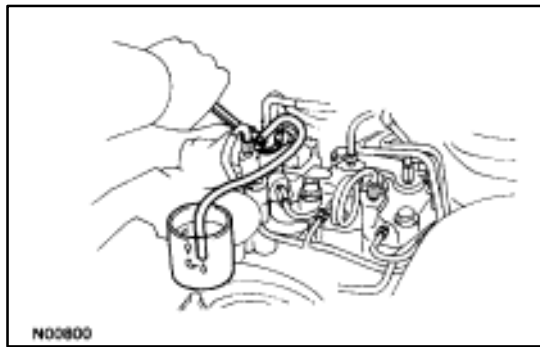
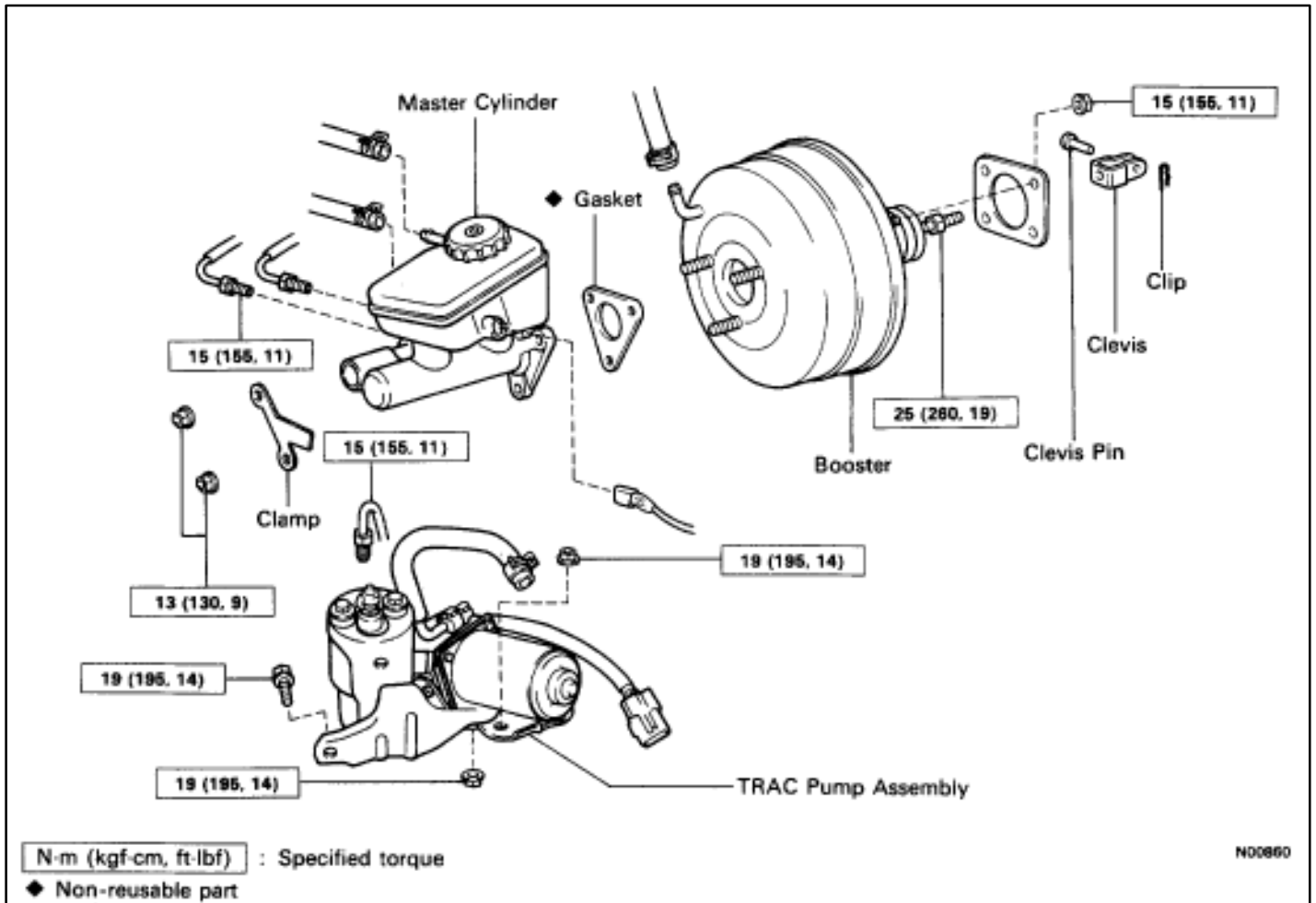


BRAKE BOOSTER

REMOVAL OF BRAKE BOOSTER



1. (w/TRAC)

DRAIN OUT HIGH PRESSURE FLUID

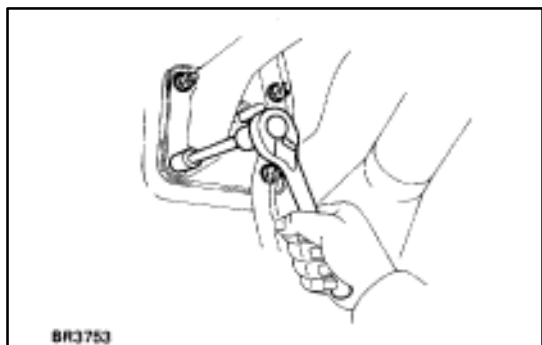
- (a) Connect a vinyl tube to the bleeder plug of the TRAC actuator, then loosen the bleeder plug with the ignition switch in the OFF position.

CAUTION: The fluid is under high pressure, and could spray out with great force, so exercise caution.

- (b) Tighten the plug when fluid stops flowing out.

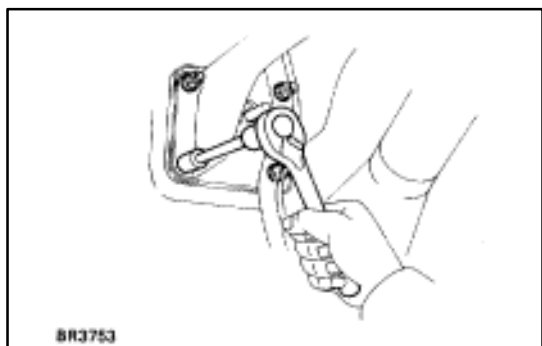
2. REMOVE FOLLOWING PARTS:

- Master cylinder (See page [BR-10](#))
- (w/ TRAC)
TRAC pump assembly (See page [BR-144](#))
- Vacuum hose
- Clip and return spring



3. REMOVE BRAKE BOOSTER

- (a) Remove the booster installation nuts.
- (b) Remove the booster and gasket.

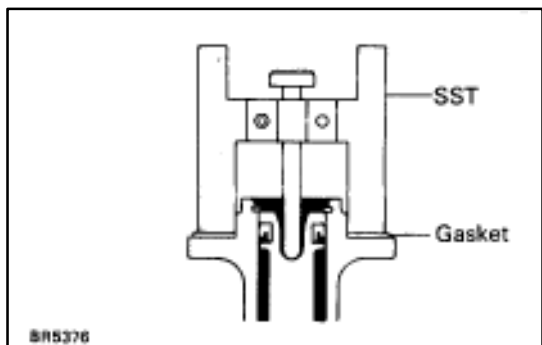


INSTALLATION OF BRAKE BOOSTER

(See page [BR-14](#))

1. INSTALL BRAKE BOOSTER

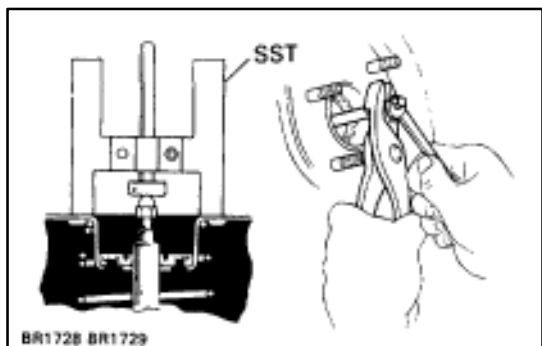
- (a) Install booster and gasket.
- (b) Install and torque the booster installation nuts.
Torque: 15 N·m (150 kgf·cm, 11 ft·lbf)
- (c) Insert the clevis pin into the clevis and brake pedal, and install the clip to the clevis pin.
- (d) Install the pedal return spring.



2. ADJUST LENGTH OF BOOSTER PUSH ROD

- (a) Install the gasket on the master cylinder.
- (b) Set the SST on the gasket, and lower the pin until its tip slightly touches the piston.

SST 09737-00010



- (c) Turn the SST upside down, and set it on the booster.
SST 09737-00010
- (d) Measure the clearance between the booster push rod and pin head (SST).

Clearance: 0 mm (0 in.)

- (e) Adjust the booster push rod length until the push rod lightly touches the pin head.

HINT: When adjusting the push rod, depress the brake pedal enough so that the push rod sticks out.

3. INSTALL FOLLOWING PARTS:

- Vacuum hose
- Master cylinder (See page [BR-9](#))
- (w/ TRAC)
TRAC pump assembly (See page [BR-144](#))

4. **FILL BRAKE RESERVOIR WITH BRAKE FLUID AND
BLEED BRAKE SYSTEM**
(See page [BR-6](#))
5. **(w/TRAC)
BLEED TRAC SYSTEM**
(See page [BR-8](#))
6. **CHECK FOR FLUID LEAKAGE**
7. **CHECK AND ADJUST BRAKE PEDAL**
(See page [BR-5](#))
8. **PERFORM OPERATIONAL CHECK**
(See page [BR-6](#))