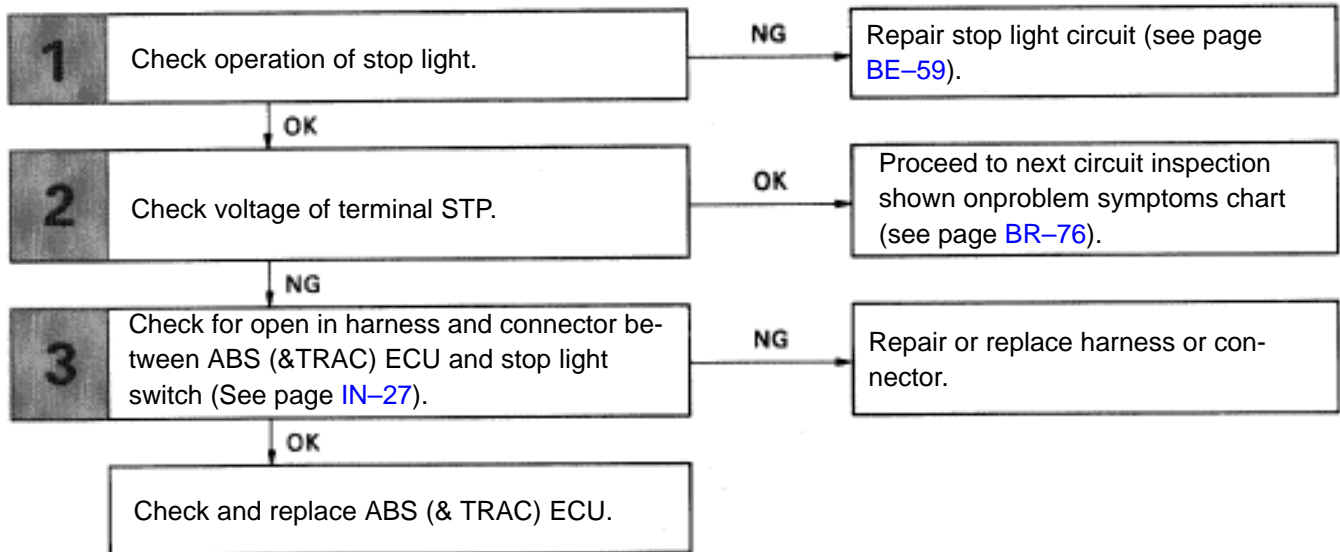


Stop Light Switch Circuit

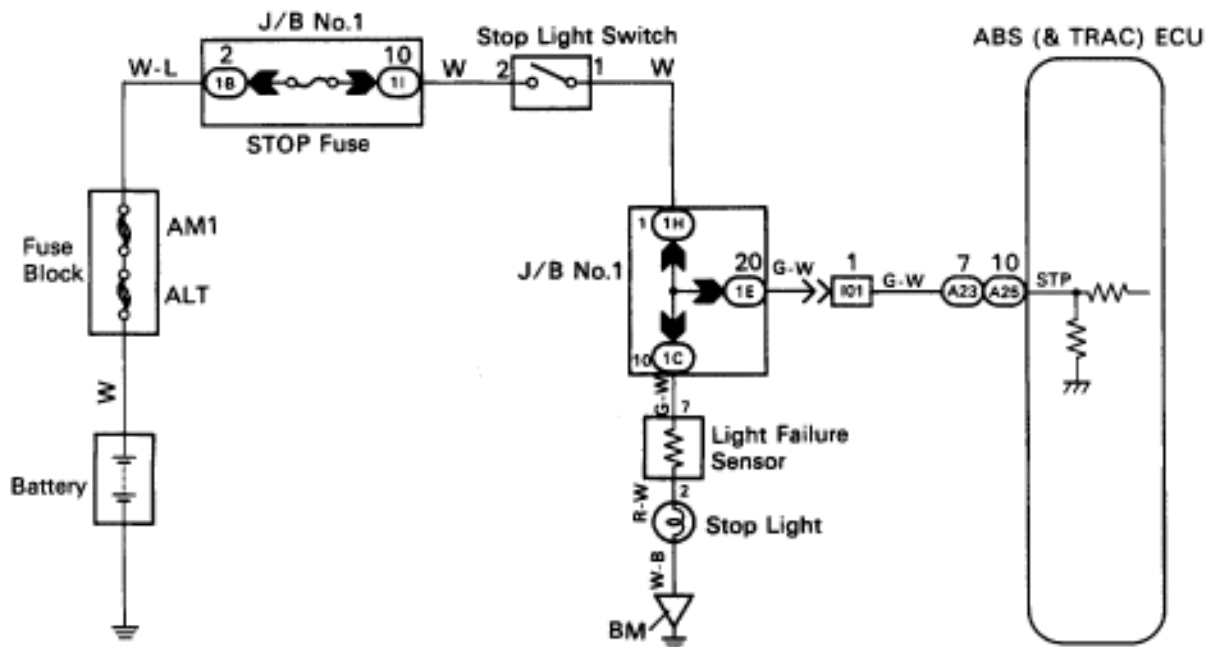
— CIRCUIT DESCRIPTION —

The stop light switch senses whether the brake pedal is depressed or released, and send the signal to the ECU.

— DIAGNOSTIC CHART —



WIRING DIAGRAM



INSPECTION PROCEDURE

1 Check operation of stop light.

- C** Check that stop light lights up when brake pedal is depressed and turns off when brake pedal is released.

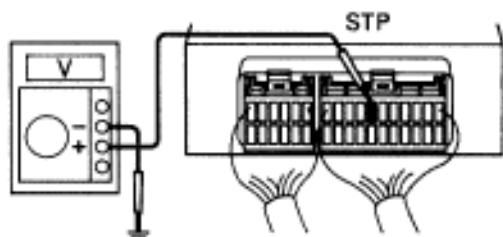
OK

NG

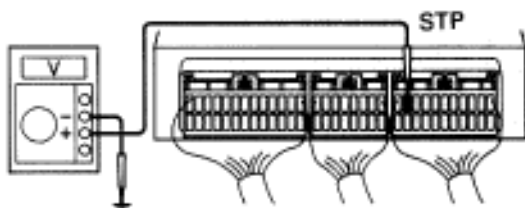
Repair stop light circuit (See page [BE-59](#)).

2 Check voltage between terminal STP of ABS (& TRAC) ECU and body ground.

ABS ECU



ABS & TRAC ECU



BR5461
BR5448

- P** Remove ABS (& TRAC) ECU with connectors still connected.

- C** Measure voltage between terminal STP of ABS (& TRAC) ECU and body ground when brake pedal is depressed.

OK Voltage: 10 – 14V

NG

OK

Proceed to next circuit inspection shown on problem symptoms chart (See page [BR-76](#)).

3 Check for open in harness and connector between ABS (& TRAC) ECU and stop light switch (See page [IN-27](#)).

OK

NG

Repair or replace harness or connector.

Check and replace ABS (& TRAC) ECU.