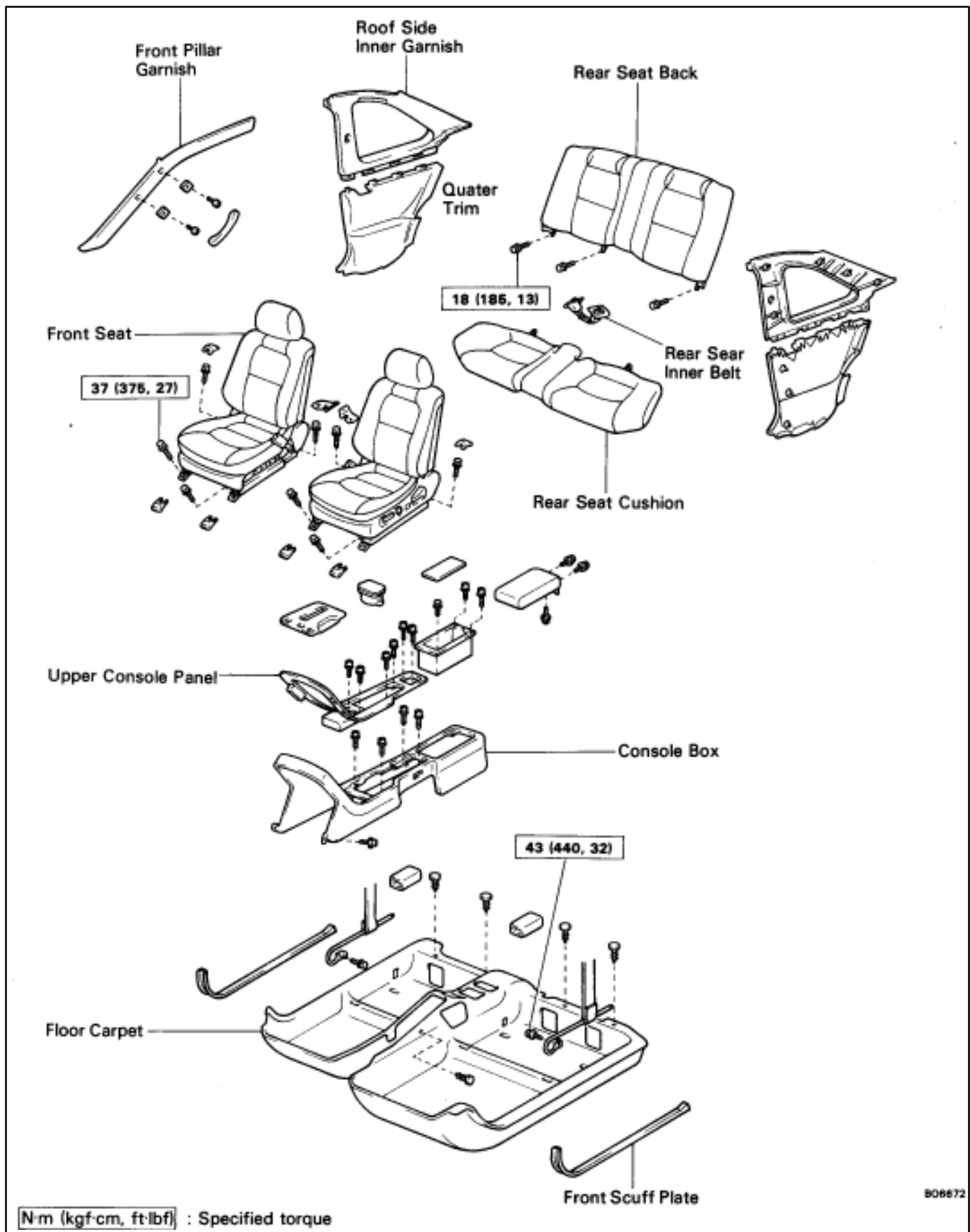


FLOOR CARPET COMPONENTS



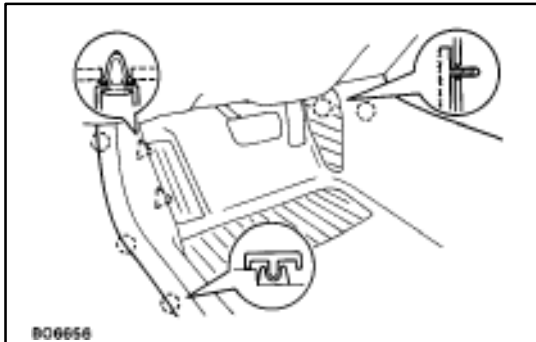
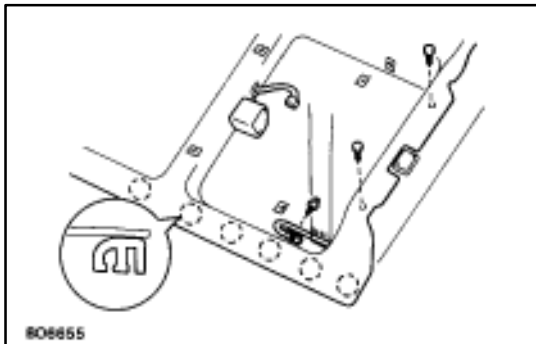
REMOVAL OF FLOOR CARPET

1. REMOVE FOLLOWING PARTS:

- Front seat (See step 3 on page [BO-58](#))
- Rear seat (See steps 1 to 2 on page [BO-66](#))
- Roof side inner garnish (See step 8 on page [BO-124](#))
- Front pillar garnish (See step 2 on page [BO-123](#))
- Front scuff plate (See step 11 on page [BO-124](#))
- Console box (See step 14 on page [BO-112](#))

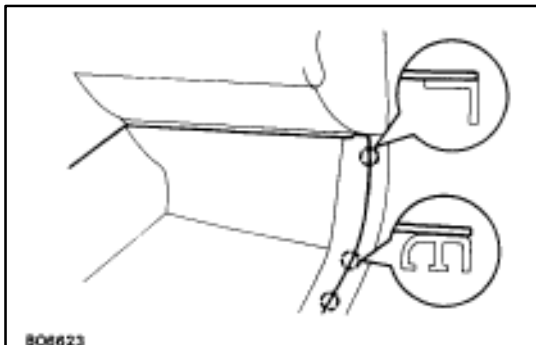
2. REMOVE FLOOR CARPET

- Using a clip remover, remove the clips.
- Remove the front seat belt lower bolt.



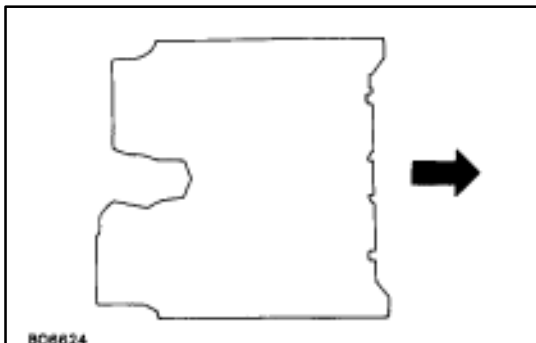
[Driver's Side]

- Raise the end of the carpet and disconnect the hook.



[Passenger's Side]

- Raise the end of the carpet and disconnect the hook.



- Slide the carpet backward and remove it.

INSTALLATION OF FLOOR CARPET

(See page [BO-118](#))

INSTALL FLOOR CARPET PARTS BY FOLLOWING REMOVAL SEQUENCE IN REVERSE

HINT: Torque following parts.

- (a) Front seat belt lower anchor bolt
Torque: 43 N·m (440 kgf·cm, 32 ft·lbf)
- (b) Front Seat
Torque: 37 N·m (375 kgf·cm, 27 ft·lbf)