

# HOW TO PROCEED WITH TROUBLESHOOTING

HINT: Troubleshooting of the theft deterrent system is based on the premise that the door lock control system is operating normally. Accordingly, before troubleshooting the theft deterrent system, first make certain that the door lock control system is operating normally.

For troubleshooting using a volt/ohm meter, see pages [BE-384](#), [BE-385](#).

For troubleshooting using both volt/ohm meter and Theft Deterrent System (TDS) checker, see page [BE-386](#).

Be sure to use troubleshooting procedure appropriate to the diagnostic tool being used.

Perform troubleshooting in accordance with the procedure on the following page.

## How to Proceed with Troubleshooting Using Volt/Ohm Meter

### 1 CUSTOMER PROBLEM ANALYSIS

Using the customer problem analysis check sheet for reference, ask the customer in as much detail as possible about the problem.

### 2 PROBLEM SYMPTOM CONFIRMATION, 3 SYMPTOM SIMULATION.

Confirm the problem symptoms referring to the system inspection on page [BE-388](#). If the problem does not reappear, be sure to simulate the problem, using the "Problem Simulation Method".

### 4 MATRIX CHART OF PROBLEM SYMPTOMS

Confirm the order of inspection for each applicable problem symptom on the Matrix Chart.

### 5 CIRCUIT INSPECTION

Proceed with diagnosis of each circuit in accordance with the inspection order confirmed in 4.


Judge whether the cause of the problem is in the sensor, actuators, wire harness and connectors, or the ECU.

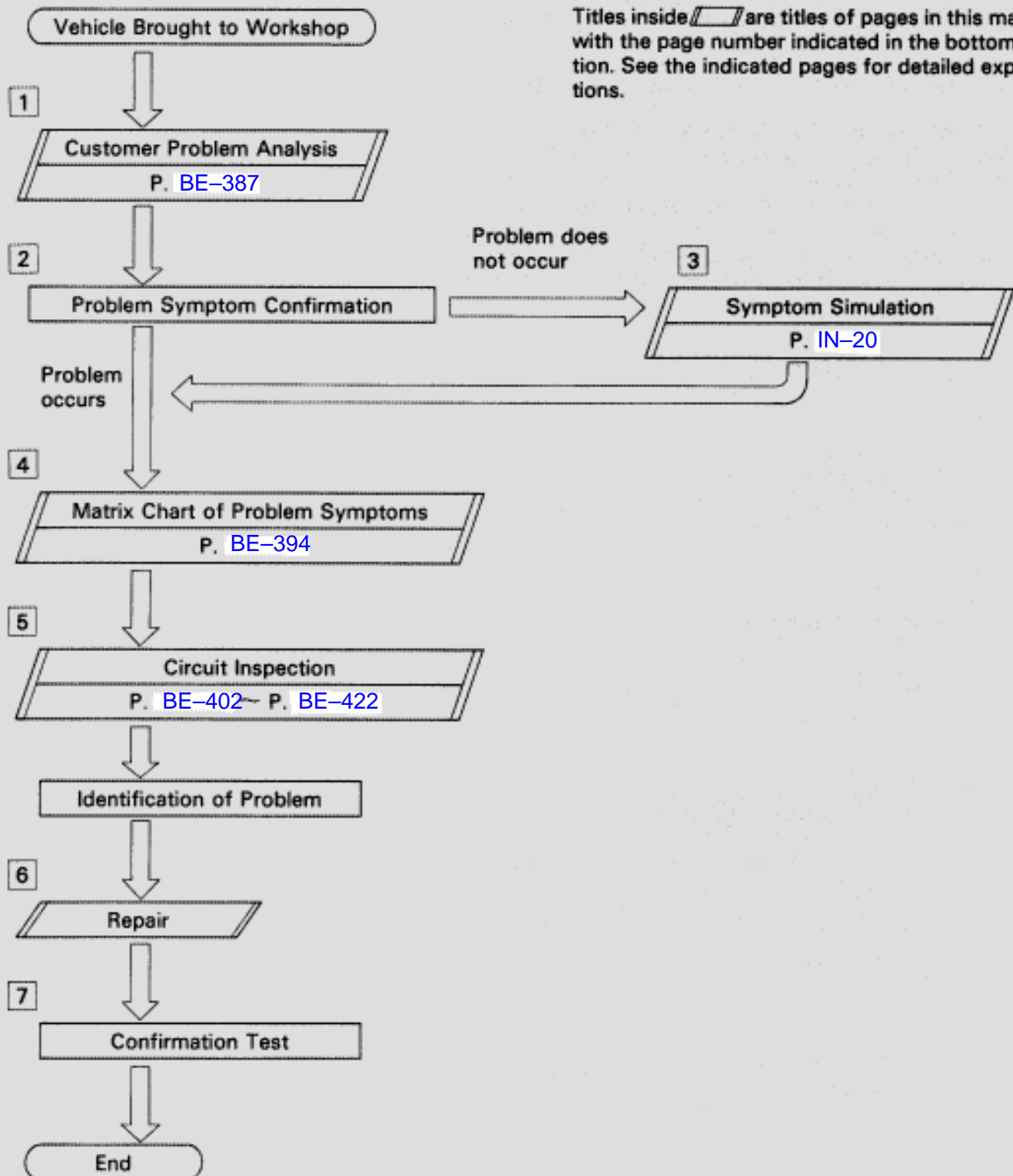
### 6 REPAIR

If the cause of the problem is found in 5, perform repairs.

### 7 CONFIRMATION TEST

After completing repairs, confirm not only that the problem is eliminated but also make sure the theft deterrent system is operating normally in accordance with the system inspection on page [BE-388](#).

Titles inside  are titles of pages in this manual, with the page number indicated in the bottom portion. See the indicated pages for detailed explanations.



## How to Proceed with Troubleshooting Using Theft Deterrent System (TDS) Checker

For the explanation for ① ~ ③ and ⑤ ~ ⑧, See the explanation for the same titles on page BE-384.

### ④ CIRCUIT INSPECTION USING A TDS CHECKER

After confirming the symptoms, connect the TDS checker and inspect all the systems which can be checked using the checker. If a malfunction is discovered during this inspection, proceed to Circuit inspection by Volt/Ohm Meter, and inspect the applicable circuit by volt/ohm meter to find out if the malfunction is in the sensors, actuator, W/H, connector or ECU. IF the malfunctioning circuit is not found, proceed to the Matrix Chart of Problem Symptoms and continue troubleshooting.

For instructions on how to connect the checker to the vehicle and how to use the checker, please refer to the instruction Manual for TDS checker.

