

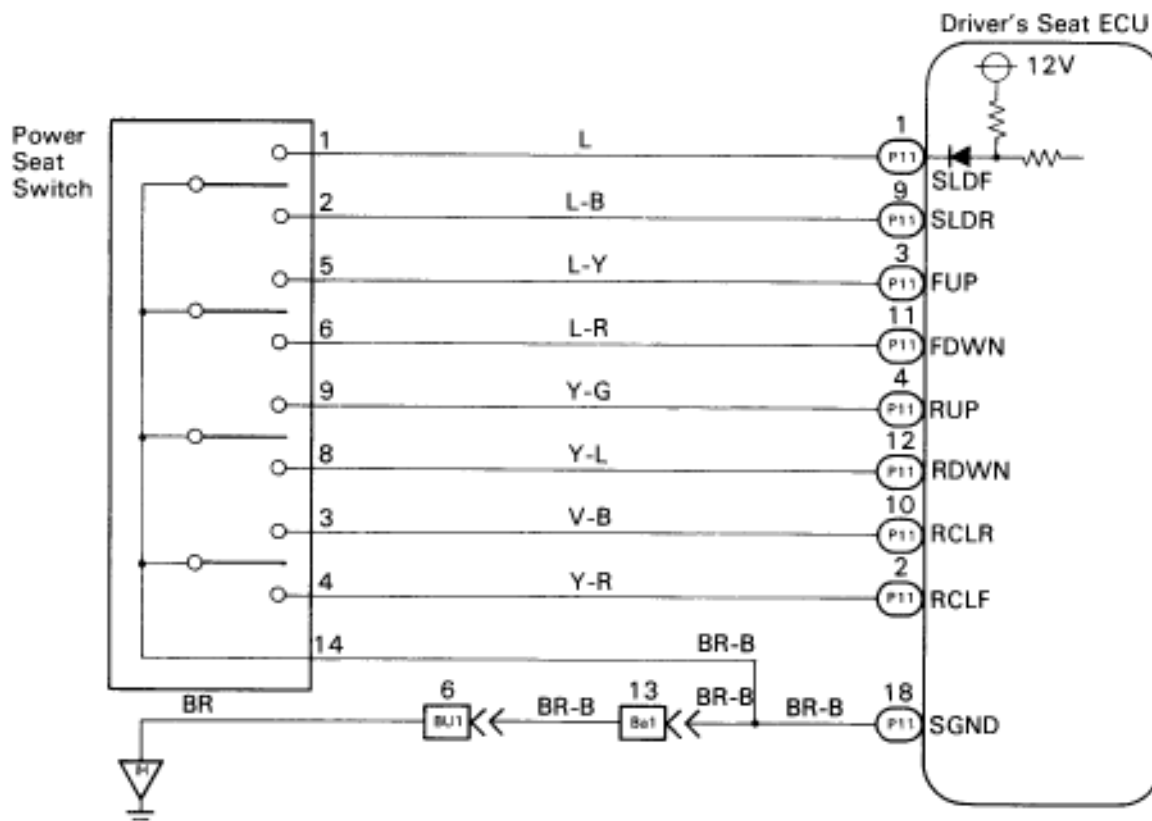
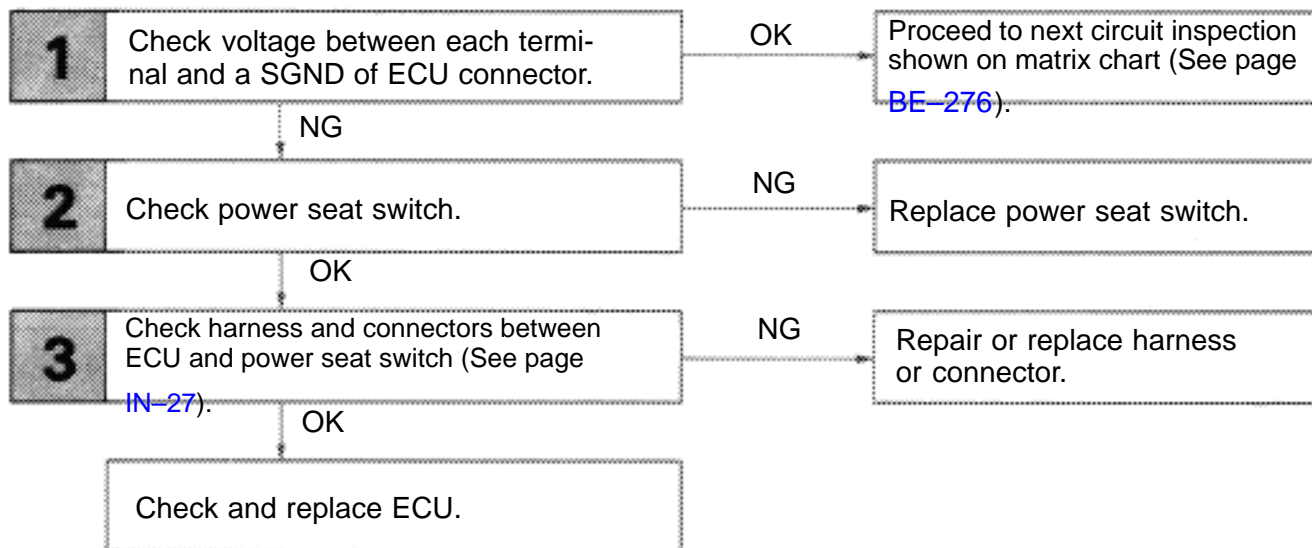
Power Seat Switch Circuit

— CIRCUIT DESCRIPTION —

When the power seat switch is operated, a signal is sent from the power seat switch to the ECU and the ECU sends a signal to the motor to make it operate (except for the lumbar support).

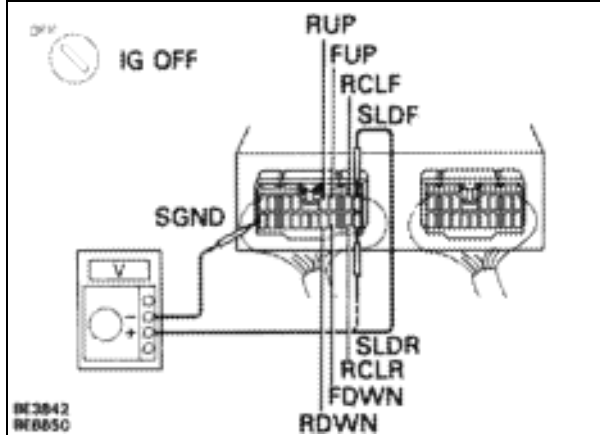
Even if a malfunction should occur with the position sensor and return operation is prohibited, manual operation will occur as normal.

— DIAGNOSTIC CHART —



INSPECTION PROCEDURE

1 Check voltage between each terminal and SGND ECU connector.



P Remove ECU with connectors still connected.

C Measure voltage between each terminal of the manual switch and SGND of ECU connector.

OK

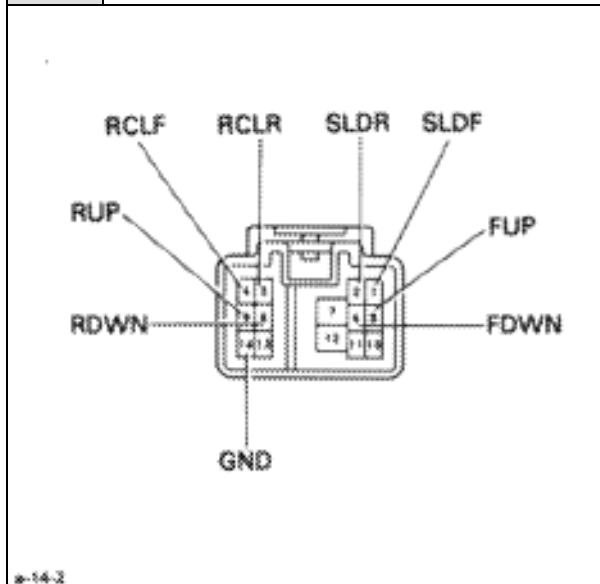
At each terminal	With SW ON	Below 1 V
	With SW OFF	10 – 14 V

NG

OK

Proceed to next circuit inspection shown on matrix chart (See page [BE-276](#)).

2 Check power seat switch.



P Disconnect power seat switch connector.

C Check continuity of each terminal.

		Terminal								Continuity	
Switch position		4	3	8	9	6	5	2	1	14	
Slide	Neutral										
	Front										
Front vertical	Up										
	Down										
Rear vertical	Up										
	Down										
Reclining	Forward reclining										
	Rear reclining										

OK

NG

Replace power seat switch.

3 Check for open and short in harness and connectors between ECU and power seat switch (See page [IN-27](#)).

OK

NG

Repair or replace harness or connector.

Check and replace ECU.