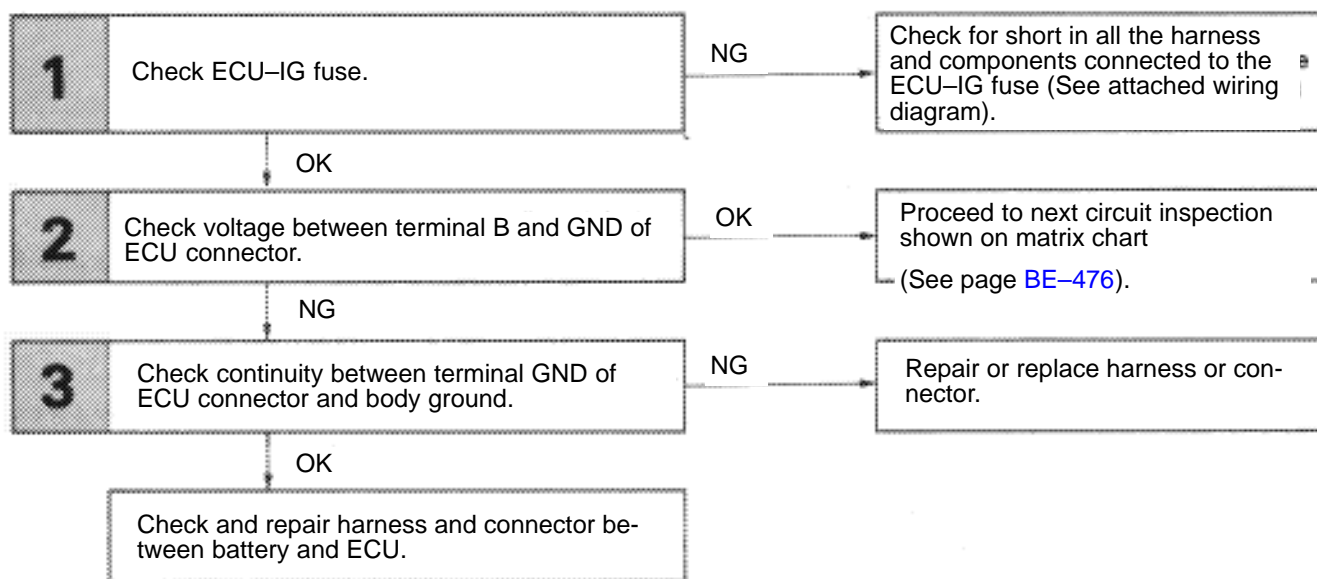


## ECU Power Source Circuit

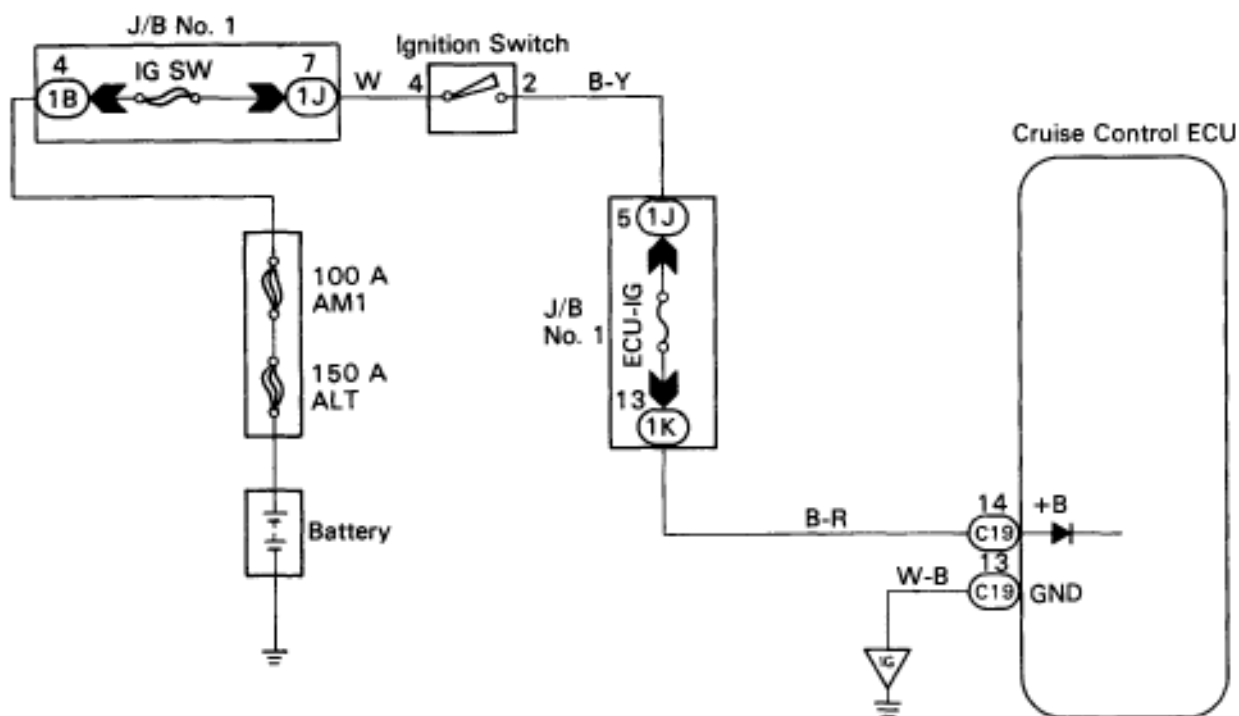
### — CIRCUIT DESCRIPTION —

The ECU power source supplies power to the actuator and sensors, etc. Terminal GND and the cruise control ECU case are grounded.

### — DIAGNOSTIC CHART —

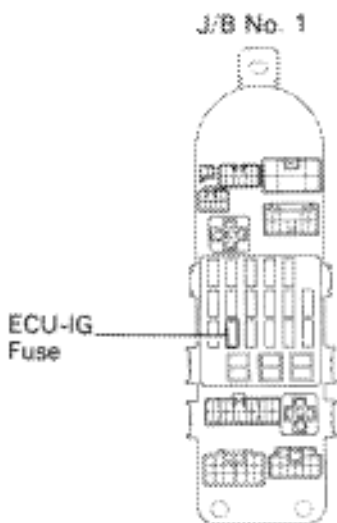


### WIRING DIAGRAM



# INSPECTION PROCEDURE

## 1 Check ECU-IG fuse.



BE5524

**P** Remove ECU-IG fuse from J/B No.1

**C** Check continuity of ECU-IG fuse.

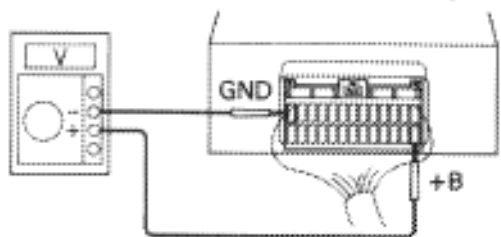
**OK** Continuity

OK

NG

Check for short in all the harness and components connected to the ECU-IG fuse (See attached wiring diagram).

## 2 Check voltage between terminals +B and GND of ECU connector.

BE384G  
BE5522

**P** Remove ECU with connectors still connected.

**C** (1) Turn ignition switch ON.  
(2) Measure voltage between terminals +B and GND of ECU connector.

**OK** Voltage: 10 – 14 V

NG

OK

Proceed to next circuit inspection shown on matrix chart (See page [BE-476](#)).

Go to step [3](#)

**Check continuity between terminal GND of ECU connector and body ground.**



**OK Resistance: 1  $\Omega$  or less**

**Repair or replace harness or connector.**

**Check and repair harness and connector between battery and ECU.**