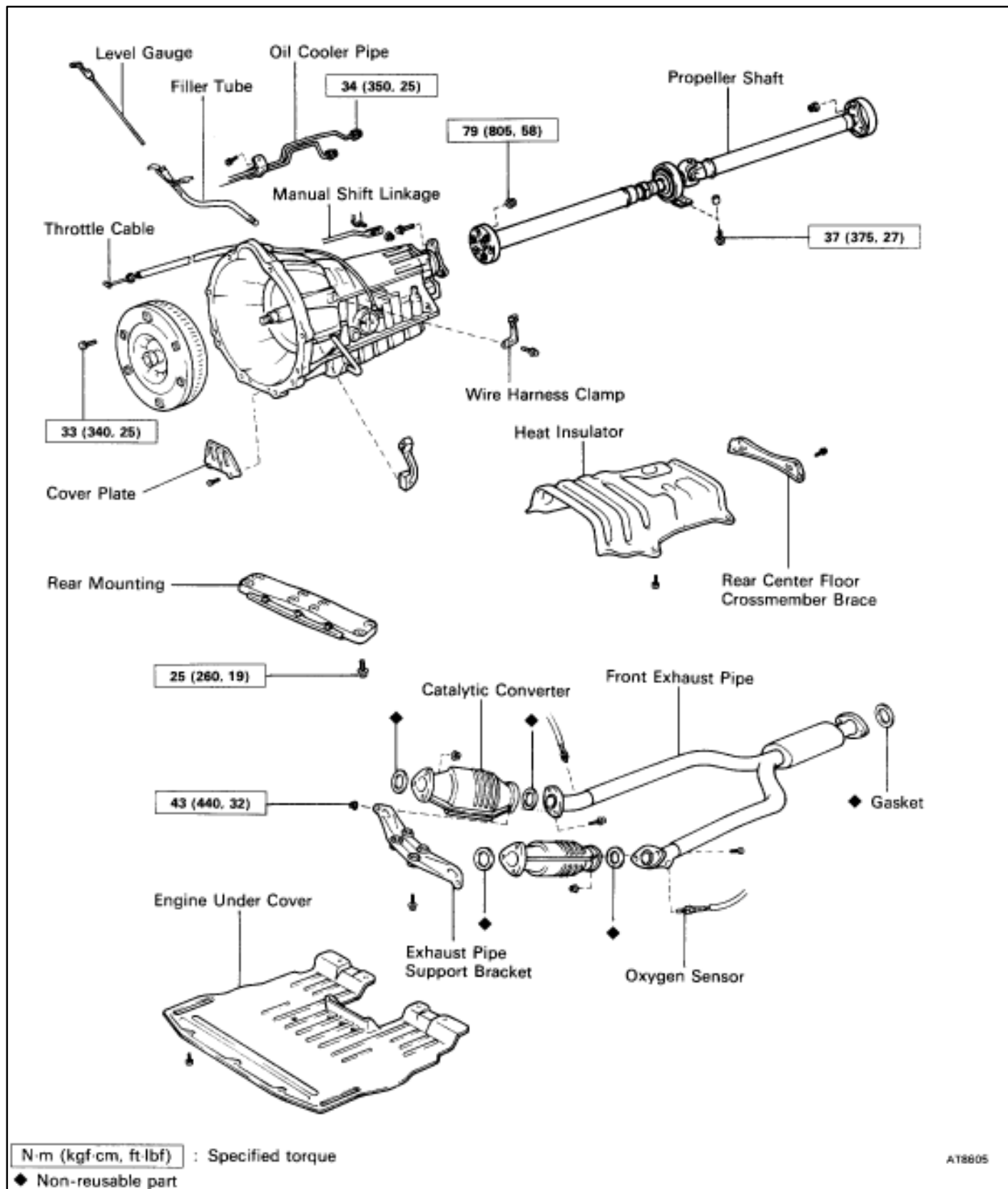


REMOVAL AND INSTALLATION OF TRANSMISSION

Remove and install the parts as shown.

NOTICE: Work must be started after approx. 20 seconds or longer from the time the ignition switch is turned to the "LOCK" position and the negative (–) terminal cable is disconnected from the battery.



NOTICE: Before removal of transmission, disconnect the throttle cable from the relative parts in the engine compartment in the following order.

- A: Throttle lever
- B: Throttle cable bracket
- C: Clamp
- D: Clamp
- E: Clamp

