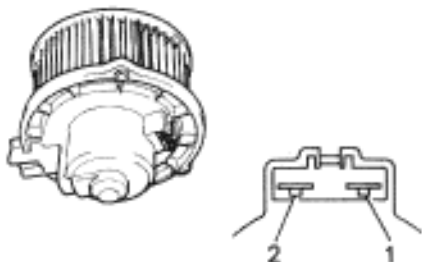
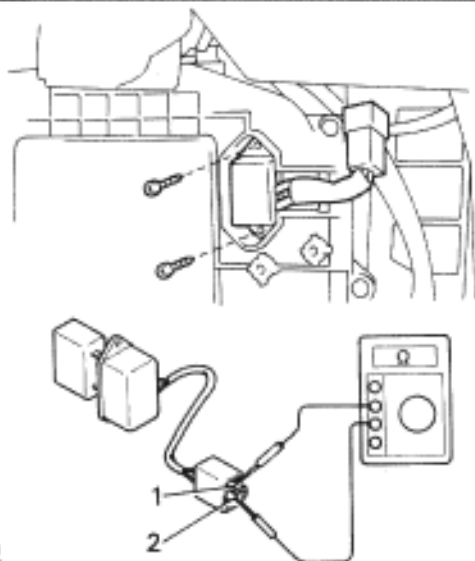




# INSPECTION PROCEDURE

**1****Check blower motor.**

AC2940

**P**3. Remove blower motor (See page [BO-131](#)).**C**Connect positive  $\oplus$  lead to terminal 2 of blower motor connector, negative  $\ominus$  lead to terminal 1**OK****Blower motor operates smoothly.****OK****NG****Replace blower resistor.****2****Check blower resistor.**N00661  
AC2938**P**

Disconnect blower resistor connector.

**C**

Measure resistance between terminals 1 and 2 of blower resistor.

**OK****Resistance 2.6 — 3.0  $\Omega$** **OK****NG****Replace blower resistor.****3****Check for open and short in harness and connector between battery and blower motor, blower motor and body ground (see page [IN-27](#)).****OK****NG****Repair or replace harness or connector.**

Proceed to next circuit inspection shown on matrix chart (see page [AC-36](#)).