

Circuit Inspection

Diag. Code (Normal)
Source Voltage Drop

CIRCUIT DESCRIPTION

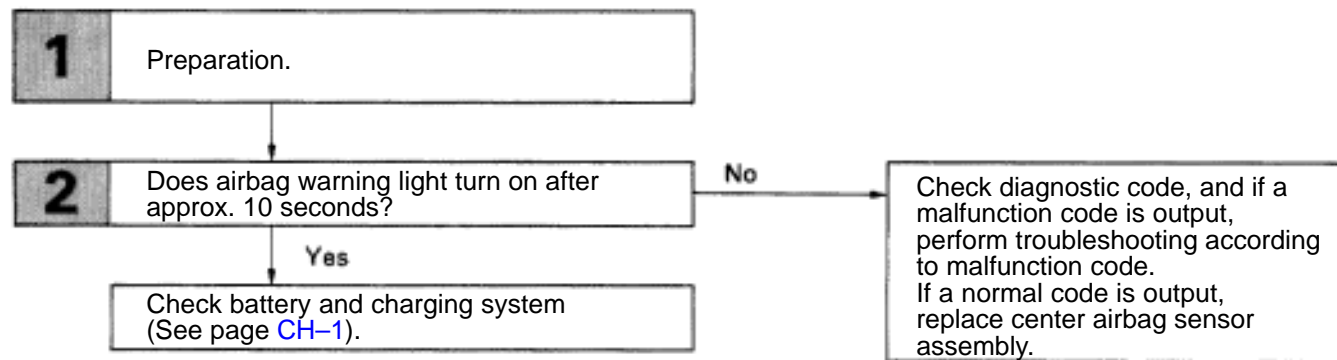
The airbag system is equipped with a voltage-increase circuit (DC-DC converter) in the center airbag sensor assembly in case the source voltage drops.

When the battery voltage drops, the voltage-increase circuit (DC-DC converter) functions to increase the voltage of the airbag system to normal voltage.

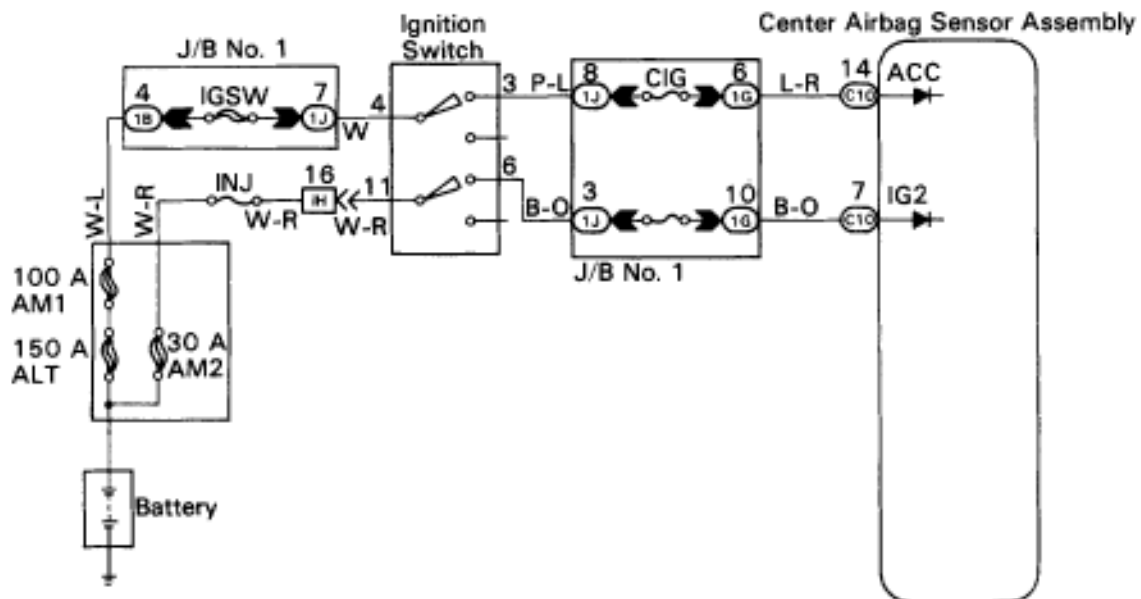
The diagnosis system malfunction display for this circuit is different to other circuits—when the airbag warning light remains lit up and the diagnostic code is a normal code, source voltage drop is indicated. Malfunction in this circuit is not recorded in the center airbag sensor assembly, and approx. 10 seconds after the source voltage returns to normal, the airbag warning light automatically goes off.

Code No.	Diagnosis
(Normal)	Source voltage drop.

DIAGNOSTIC CHART



WIRING DIAGRAM



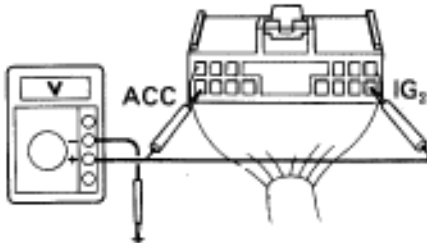
INSPECTION PROCEDURE

1

Preparation.



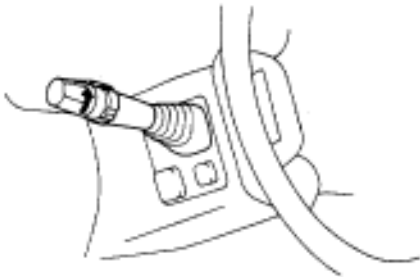
Center Airbag Sensor Assembly

AB0119
AB0308

- P**
- (1) Turn ignition switch LOCK.
 - (2) Disconnect center airbag sensor assembly connector.
 - (3) Turn ignition switch ON. But do not start engine.
 - (4) Measure voltage at IG₂ or ACC on connector wire harness side of center airbag assembly and operate electric system (defogger, wiper, headlight, heater, blower, etc.).
Voltage: 6 V – 11.5 V at IG₂ and ACC.
 - (5) Turn electric system switch OFF.
 - (6) Turn ignition switch LOCK.
 - (7) Remove voltmeter and connect center airbag sensor assembly.

2

Does airbag warning light turn off after approx. 10 seconds?

AB0119
AB0134

- P** Turn ignition switch ON.
- C** Operate electric system checked in [1] (4) and check that airbag warning light goes off after approx. 10 seconds.

YES

NO

Check diagnostic code, and if a malfunction code is output, perform troubleshooting according to malfunction code. If a normal code is output, replace center airbag sensor assembly.

Check battery and charging system
(See page CH-1)