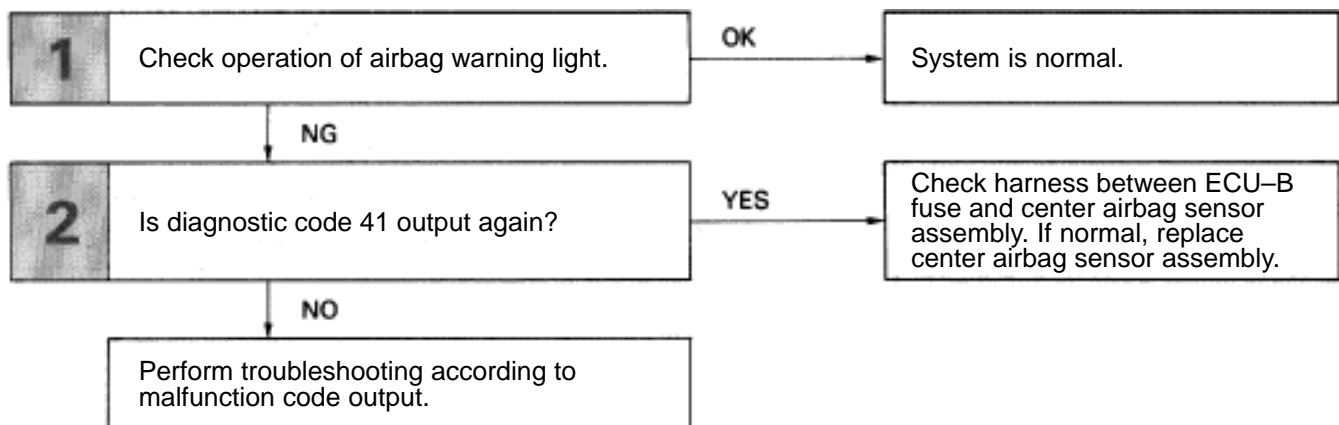
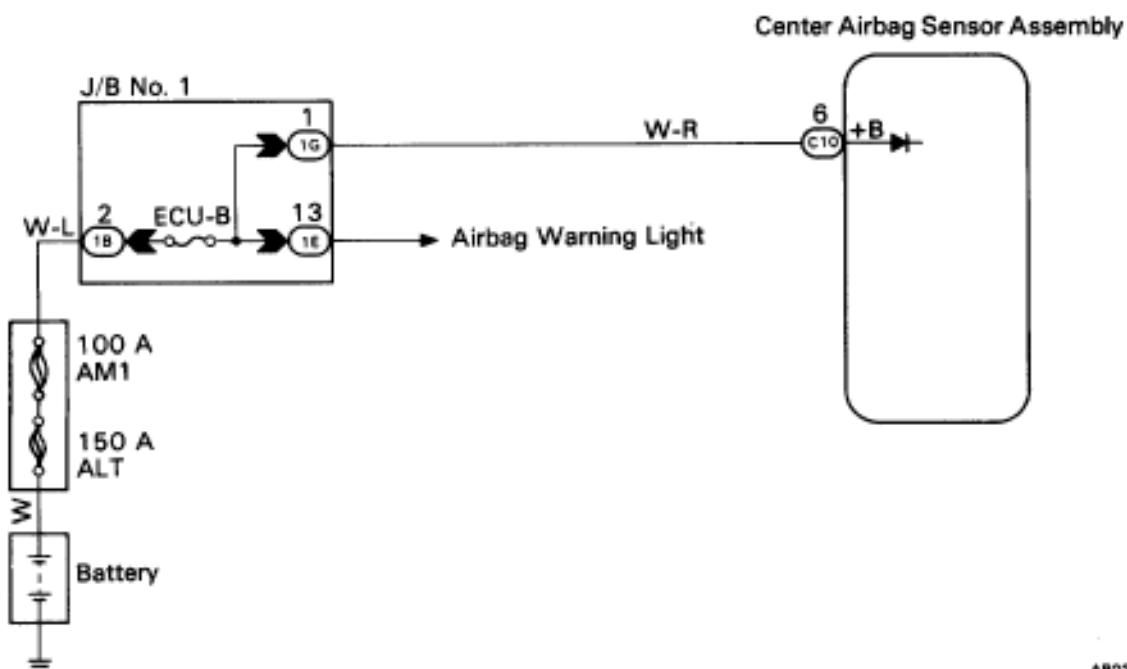


Diag. Code 41**Malfunction Stored in Memory****CIRCUIT DESCRIPTION**

If a malfunction occurs in the airbag system, malfunction codes 11 to 31 may be output, and when the battery is disconnected after the malfunction is repaired, malfunction codes 11 to 31 will be cleared, but code 41 will be output instead.

So long as the cancellation operation for a malfunction stored in memory (See page AB-32) is not performed, code 41 is stored in the center airbag sensor assembly and the airbag warning light remains lit up.

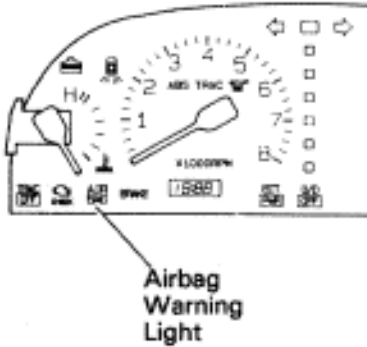
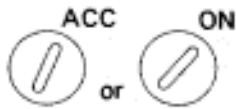
Code No.	Diagnosis
41	<ul style="list-style-type: none"> Malfunction recorded in memory. Center airbag sensor assembly malfunction.

DIAGNOSTIC CHART**WIRING DIAGRAM**

INSPECTION PROCEDURE

1

Check operation of airbag warning light.



AB0118 AB0119
AB0326

P

Clear malfunction code 41 stored in memory (see page [AB-32](#)).

C

- (1) Turn ignition switch LOCK, and wait at least 2 seconds.
- (2) Turn ignition switch ACC or ON, and wait at least 20 seconds.
- (3) Check operation of airbag warning light.

OK

Airbag warning light turns off.

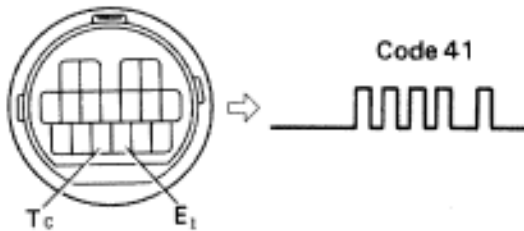
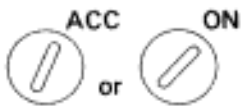
NG

OK

System is normal.

2

Is diagnostic code 41 output again?



AB0118 AB0119
S-17-1 FI1396

C

- (1) Turn ignition switch ACC or ON, and wait at least 20 seconds.
- (2) Using SST, connect terminals Tc and E₁ of TDCL.
SST 09843-18020
- (3) Check diagnostic code.

NO

YES

Check harness between ECU-B fuse and center airbag sensor assembly. If normal, replace center airbag sensor assembly.

Perform troubleshooting according to malfunction code output.