

Diag. Code 22**Airbag Warning Light System Malfunction****CIRCUIT DESCRIPTION**

The airbag warning light is located on the combination meter.

When the airbag system is normal, the airbag warning light lights up for approx. 6 seconds after the ignition switch is turned from LOCK position to ACC or ON position, and then turns off automatically. If there is a malfunction in the airbag system, the airbag warning light lights up to inform the driver of the abnormality.

When terminals Tc and E₁ of the TDCL are connected, the diagnostic code is displayed by the blinking of the airbag warning light.

The airbag warning light circuit is equipped with an electrical connection check mechanism which detects when the connector to the center airbag sensor assembly is not properly connected.

If the connector to the center airbag sensor assembly is not properly connected, the airbag warning light will not light up.

Diagnostic code 22 is recorded when a malfunction occurs in the airbag warning light system.

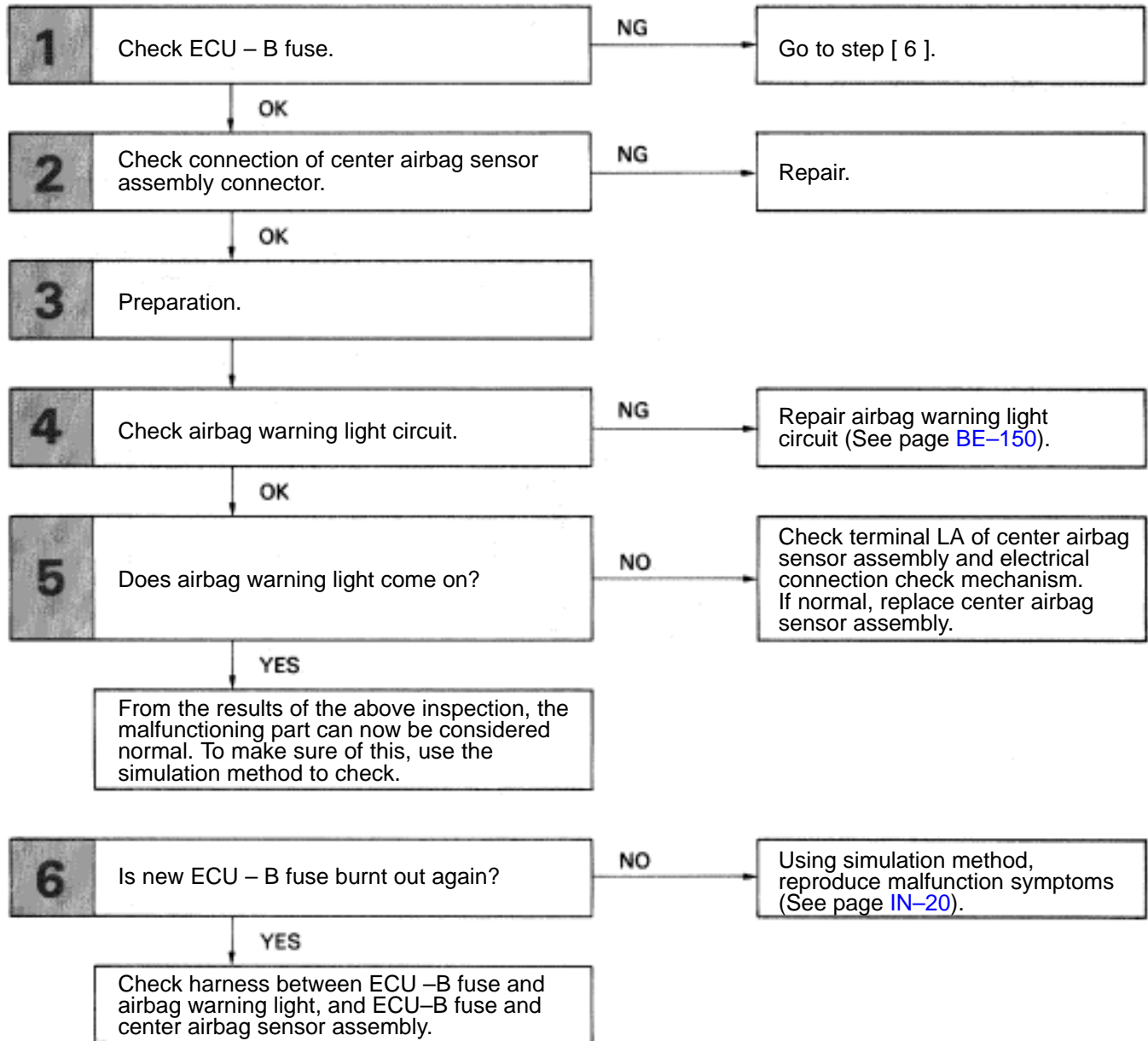
If an OPEN malfunction occurs in the airbag warning light system, the airbag warning light does not light up, so that until the malfunction is repaired, the diagnostic codes (including code 22) cannot be confirmed.

Code No.	Diagnosis
22	<ul style="list-style-type: none">• Open circuit in airbag warning light system.• Center airbag sensor assembly malfunction.

DIAGNOSTIC CHART

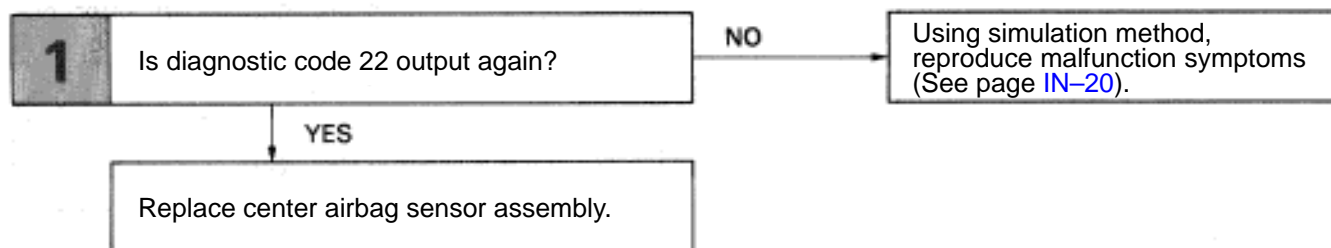
Troubleshooting for this system is different for when the airbag warning light does not light up and for when diagnostic code 22 is output. Confirm the problem symptoms first before selecting the appropriate troubleshooting procedure.

HINT: If airbag warning light does not light up, perform the following troubleshooting:

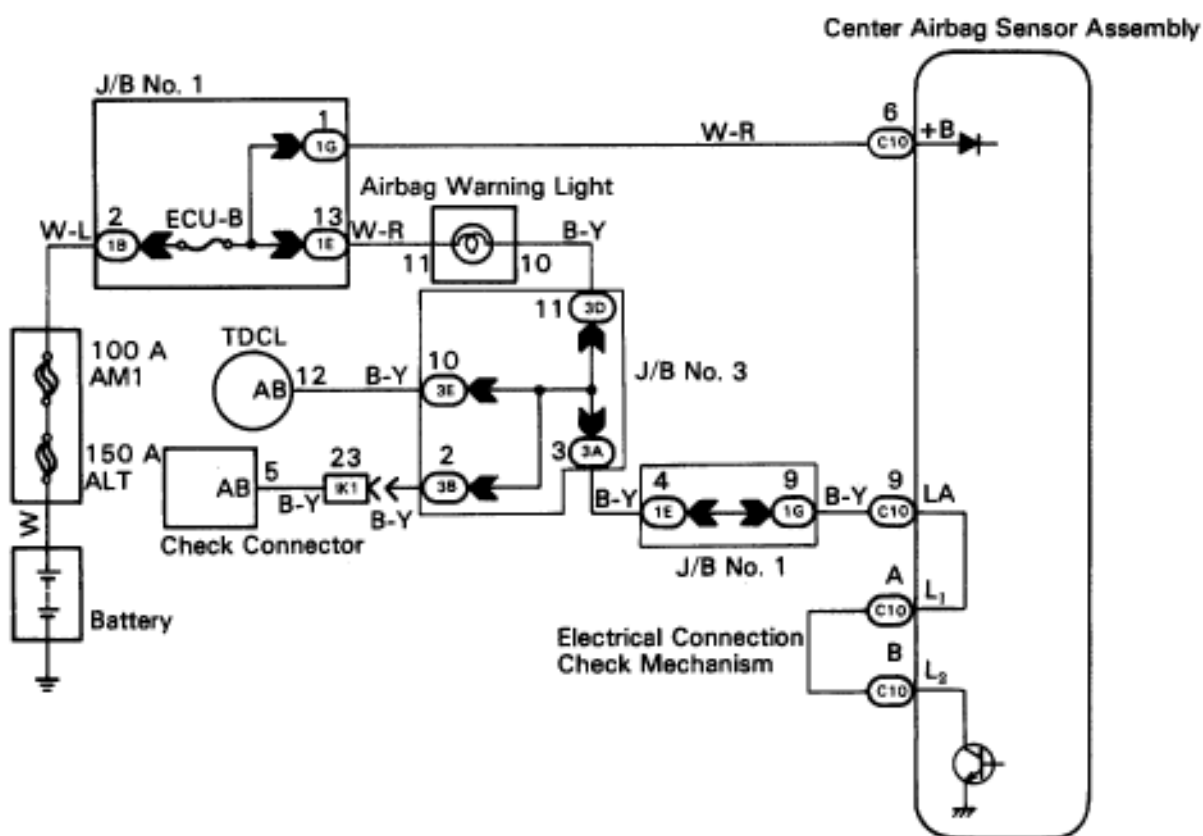


DIAGNOSTIC CHART

HINT: If diagnostic code 22 is output, perform the following troubleshooting:



WIRING DIAGRAM



INSPECTION PROCEDURE

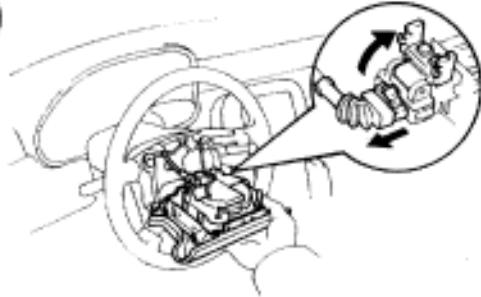
HINT: If airbag warning light does not light up, perform the following troubleshooting:

1**Check ECU-B fuse.****OK****NG**

Go to step [6].

2**Check connection of center airbag sensor assembly connector,****OK****NG**

Repair

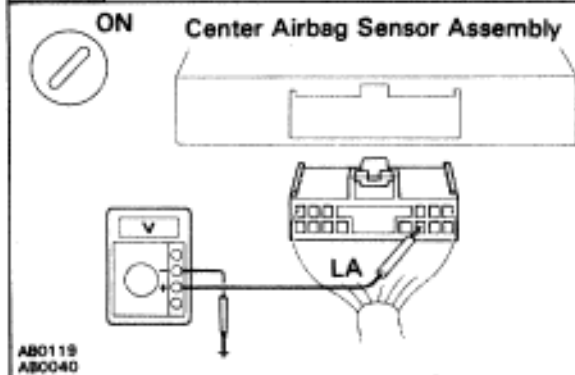
3**Preparation.****LOCK**AB0117
AB0340**P**

- (1) Disconnect battery negative (–) terminal cable, and wait at least 20 seconds.
- (2) Remove steering wheel pad
(See page [AB-14](#)).

Caution

When storing steering wheel pad, keep upper surface of the pad facing upward.



4**Check airbag warning light circuit.**

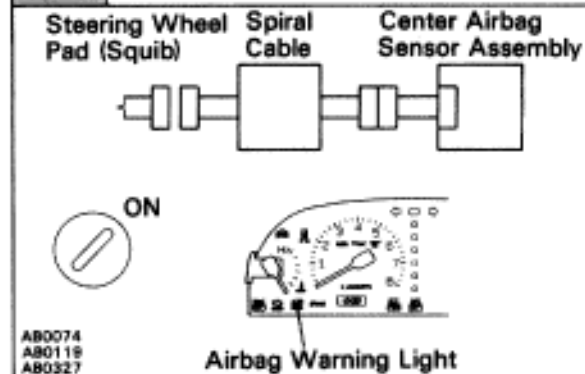
- P** (1) Disconnect center airbag sensor assembly.
 (2) Connect negative (–) terminal cable to battery.
 (3) Turn ignition switch ACC or ON.

C Measure voltage LA terminal of harness side connector of center airbag sensor assembly.

OK Voltage: 10 – 14 V

OK**NG**

Replace airbag warning light circuit
 (See page [BE-150](#)).

5**Does airbag warning light come on?**

- P** (1) Disconnect negative (–) terminal cable from battery.
 (2) Connect center airbag sensor assembly.
 (3) Connect negative (–) terminal cable to battery.
 (4) Turn ignition switch ACC or ON.

C Check operation of airbag warning light.

YES**NO**

Check terminal LA of center airbag sensor assembly and electrical connection check mechanism. If normal, replace center airbag sensor assembly.

From the results of the above inspection, the malfunctioning part can now be considered normal. To make sure of this, use the simulation method to check.

6**Is new ECU-B fuse burnt out again?****YES****NO**

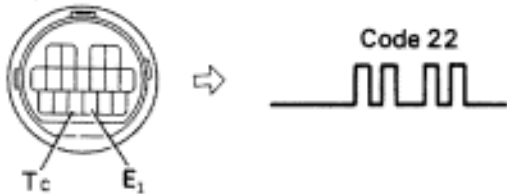
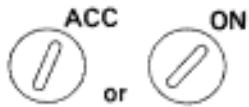
Using simulation method, reproduce malfunction symptoms (See page [IN-20](#)).

Check harness between ECU-B fuse and airbag warning light, and ECU-B fuse and center airbag sensor assembly,

HINT: If diagnostic code 22 is output, perform the following troubleshooting:

1

Is diagnostic code 22 output again?



AB0118 AB0119
S-17-1 F11302

P

Clear malfunction code 41 stored in memory (see page [AB-32](#)).

C

- (1) Turn ignition switch LOCK, and wait at least 2 seconds.
- (2) Turn ignition switch ACC or ON, and wait at least 20 seconds.
- (3) Using SST, connect terminals Tc and E₁ of TDCL.
SST 09843-18020
- (4) Check diagnostic code.

YES

NO

Using simulation method, reproduce malfunction symptoms (See page [IN-20](#)).

Replace center airbag sensor assembly.