

**Diag. Code 14****Open in Squib Circuit****CIRCUIT DESCRIPTION**

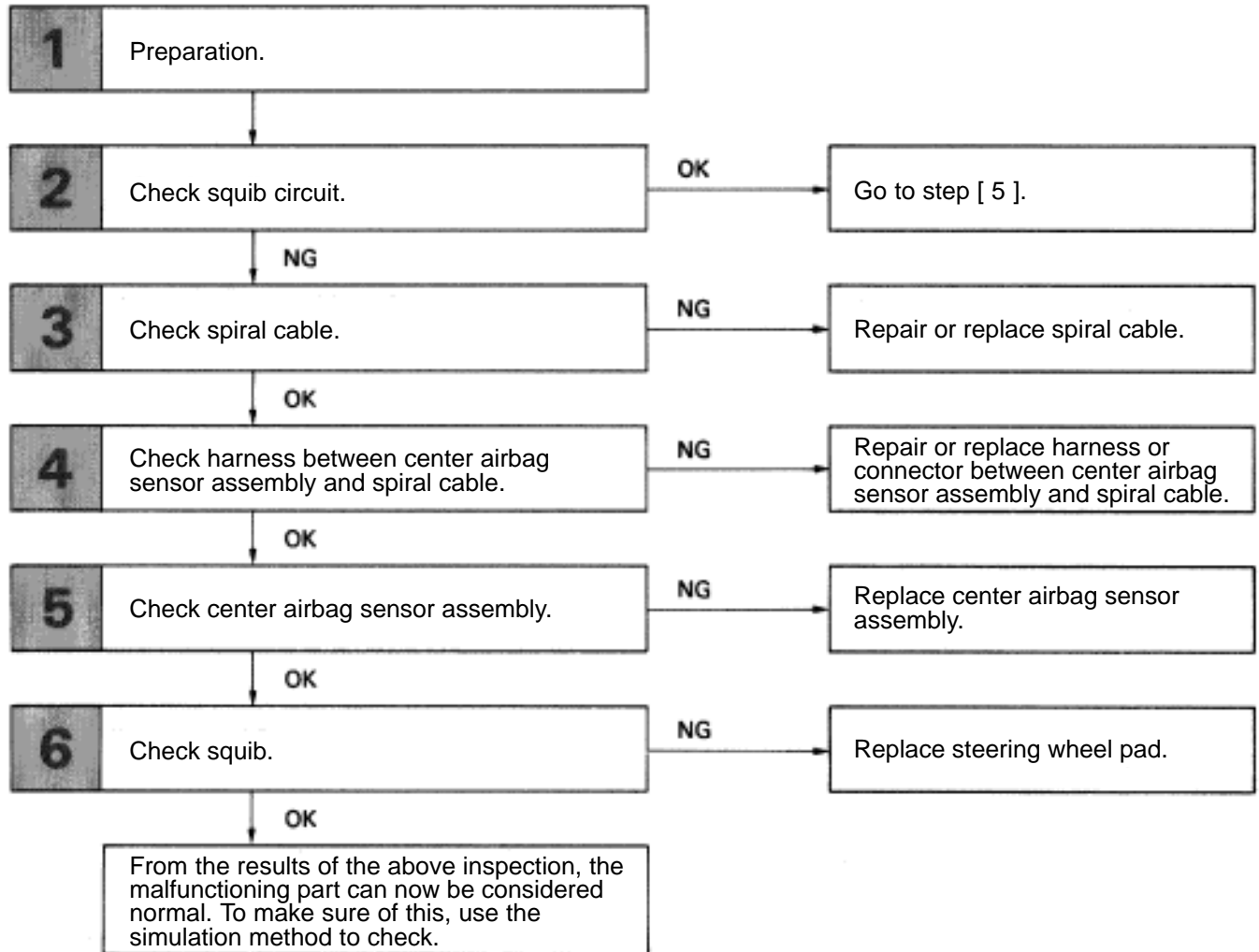
The squib circuit consists of the center airbag sensor assembly, spiral cable and the steering wheel pad (squib). It causes the airbag to deploy when the airbag deployment conditions are satisfied.

For details of the function of each component, see FUNCTION OF COMPONENTS on page [AB-5](#).

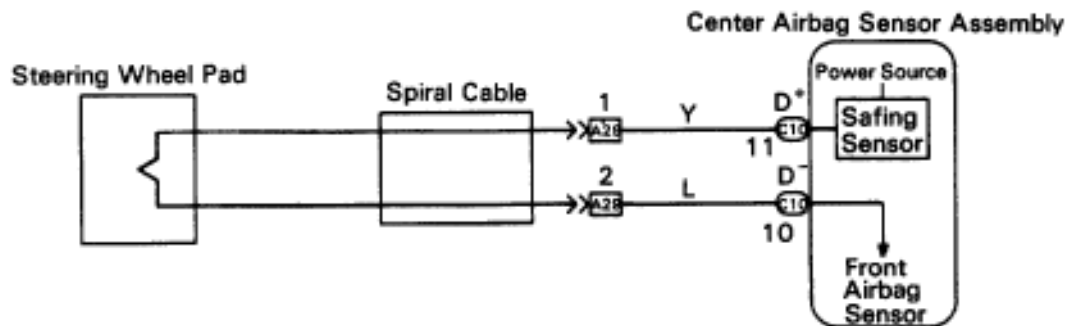
Diagnostic code 14 is recorded when an open is detected in the squib circuit.

Code No.	Diagnosis
14	<ul style="list-style-type: none"><li>• Open circuit in D<sup>+</sup> wire harness or D<sup>-</sup> wire harness of squib.</li><li>• Squib malfunction.</li><li>• Spiral cable malfunction.</li><li>• Center airbag sensor assembly malfunction.</li></ul>

## DIAGNOSTIC CHART



## WIRING DIAGRAM



AB0346

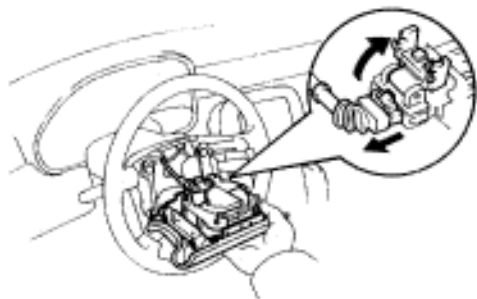
# INSPECTION PROCEDURE

1

## Preparation.



LOCK

AB0117  
AB0340

P

- (1) Disconnect battery negative (–) terminal cable, and wait at least 20 seconds.
- (2) Remove steering wheel pad  
(See page [AB-14](#)).

Caution

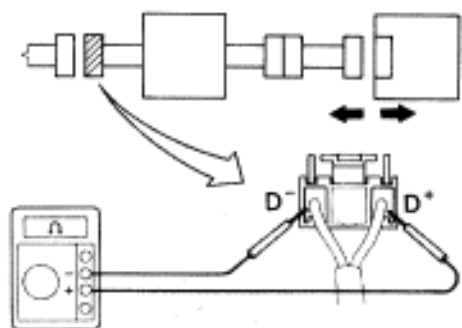
When storing steering wheel pad, keep upper surface of the pad facing upward.



2

## Check squib circuit.

Steering Wheel Pad (Squib)    Spiral Cable    Center Airbag Sensor Assembly

AB0072  
AB0068

P

Disconnect center airbag sensor assembly connector.

C

Measure resistance between D<sup>+</sup> and D<sup>–</sup> on spiral cable side of connector between spiral cable and steering wheel pad.

OK

Resistance: Below 1  $\Omega$

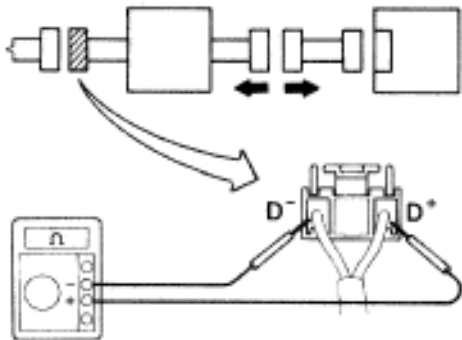
NG

OK

Go to step [ 5 ].

**3****Check spiral cable.**

Steering Wheel Pad (Squib)    Spiral Cable    Center Airbag Sensor Assembly



AB0071  
AB0068

**OK****P**

Disconnect connector between center airbag sensor assembly and spiral cable.

**C**

Measure resistance between D<sup>+</sup> and D<sup>-</sup> on spiral cable side of connector between spiral cable and steering wheel pad.

**OK**

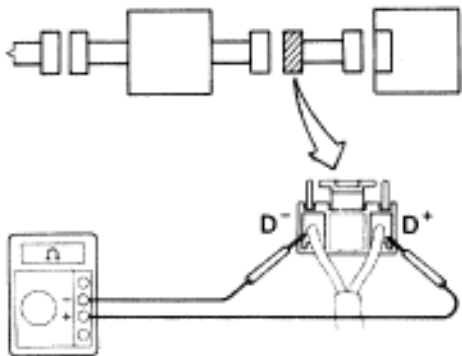
**Resistance: Below 1  $\Omega$**

**NG**

**Repair or replace spiral cable.**

**4****Check harness between center airbag sensor assembly and spiral cable.**

Steering Wheel Pad (Squib)    Spiral Cable    Center Airbag Sensor Assembly



AB0071  
AB0068

**OK****C**

Measure resistance between D<sup>+</sup> and D<sup>-</sup> on center airbag sensor assembly side of connector between center airbag sensor assembly and spiral cable.

**OK**

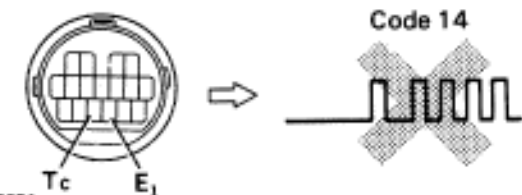
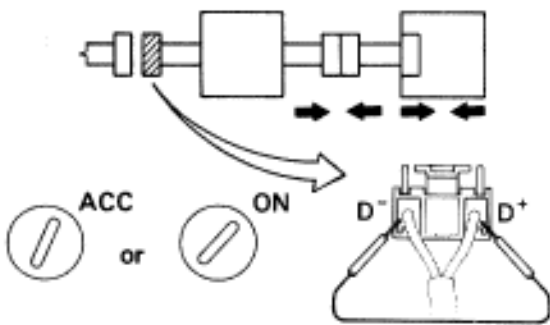
**Resistance: Below 1  $\Omega$**

**NG**

**Repair or replace harness or connector between center airbag sensor assembly and spiral cable.**

**5****Check center airbag sensor assembly.**

Steering Wheel Pad (Squib)    Spiral Cable    Center Airbag Sensor Assembly

AB0074  
AB0089  
AB0118 AB0119  
S-17-1 P11391**OK****P**

- (1) Connect connector to center airbag sensor connector.
- (2) Connect connector between center airbag sensor assembly and spiral cable.
- (3) Using a service wire, connect D<sup>+</sup> and D<sup>-</sup> on spiral cable side of connector between spiral cable and steering wheel pad.
- (4) Connect negative (-) terminal cable to battery, and wait at least 2 seconds.

**C**

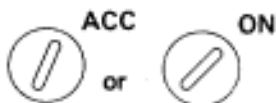
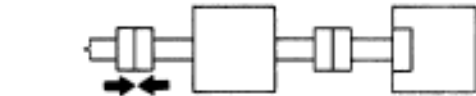
- (1) Turn ignition switch ACC or ON, and wait at least 20 seconds.
- (2) Using SST, connect terminals Tc and E<sub>1</sub> of TDCL.  
SST 09843-18020
- (3) Check diagnostic code.

**OK****Diagnostic code 14 is not output.****Hint**

Codes other than code 14 may be output at this time, but this is not relevant to this check.

**NG****Replace center airbag sensor assembly.****6****Check squib.**

Steering Wheel Pad (Squib)    Spiral Cable    Center Airbag Sensor Assembly



Code 14

AB0075  
AB0118 AB0119  
S-17-1 P11391**OK****P**

- (1) Turn ignition switch LOCK.
- (2) Disconnect battery negative (-) terminal cable, and wait at least 20 seconds.
- (3) Connect steering wheel pad (squib) connector.
- (4) Connect negative (-) terminal cable to battery and wait at least 2 seconds

**C**

- (1) Turn ignition switch ACC or ON, and wait at least 20 seconds.
- (2) Using SST, connect terminals Tc and E<sub>1</sub> of TDCL.  
SST 09843-18020
- (3) Check diagnostic code.

**OK****Diagnostic code 14 is not output.****Hint**

Codes other than code 14 may be output at this time, but this is not relevant to this check.

**NG****Replace steering wheel pad.**

From the results of the above inspection, the malfunctioning part can now be considered normal. To make sure of this, use the simulation method to check.

## MEMO