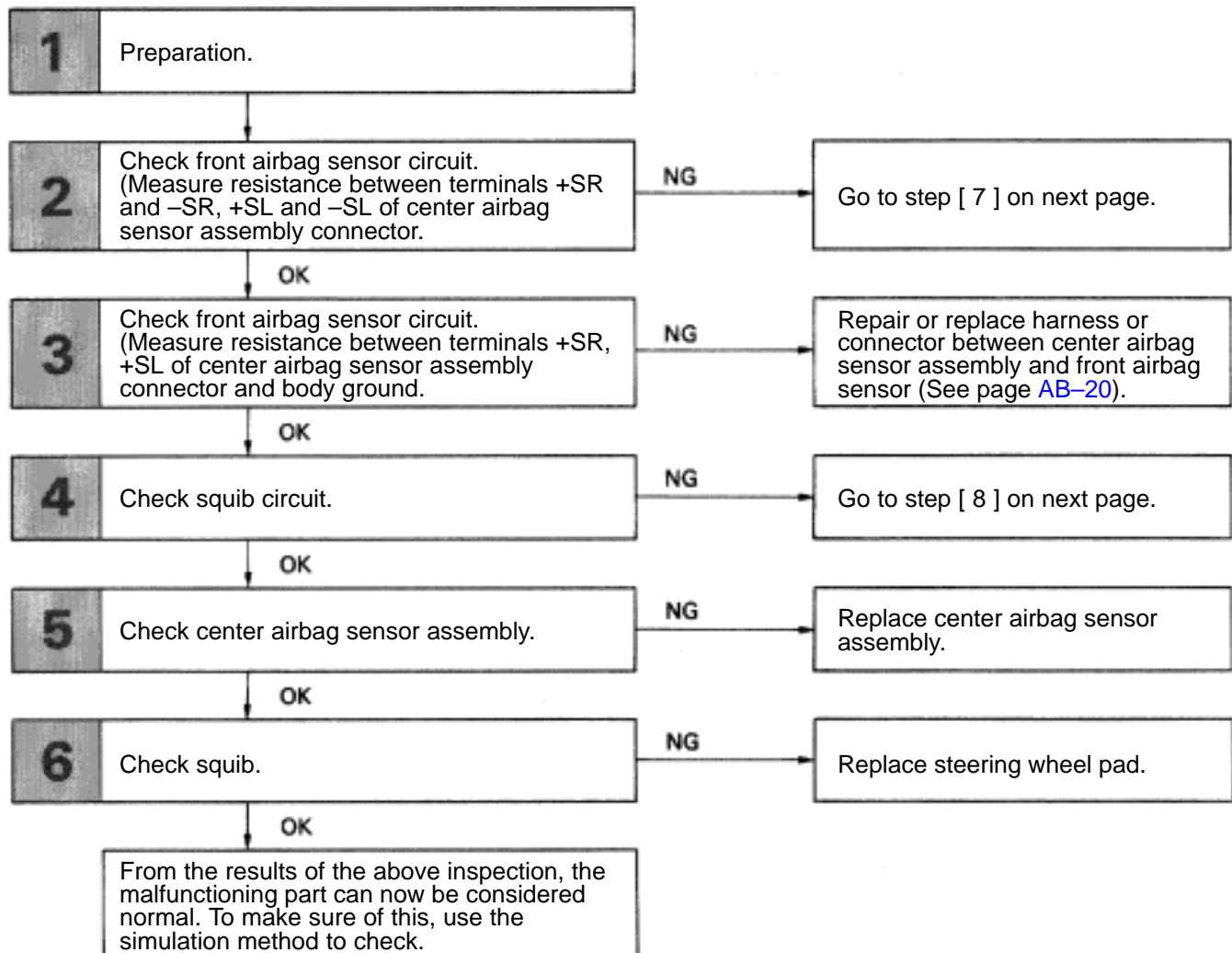


**Diag. Code 11****Short is Squib Circuit or Front Airbag Sensor Circuit (to Ground)****CIRCUIT DESCRIPTION**

The squib circuit consists of the center airbag sensor assembly, spiral cable and the steering wheel pad (squib). It causes the airbag to deploy when the airbag deployment conditions are satisfied. The front airbag sensor detects the deceleration force in a frontal collision and is located in the front fender on the left and right sides.

For details of the function of each component, see FUNCTION OF COMPONENTS on page AB-5. Diagnostic code 11 is recorded when occurrence of ground short is detected in the squib circuit or front airbag sensor circuit.

Code No.	Diagnosis
11	<ul style="list-style-type: none"> <li>• Short circuit in squib wire harness (to ground).</li> <li>• Squib malfunction.</li> <li>• Short circuit in front airbag sensor +S wire harness (to ground).</li> <li>• Front airbag sensor malfunction.</li> <li>• Short circuit between +S wire harness and –S wire harness of front airbag sensor.</li> <li>• Spiral cable malfunction.</li> <li>• Center airbag sensor assembly malfunction.</li> </ul>

**DIAGNOSTIC CHART**

## 7

8

AB0345

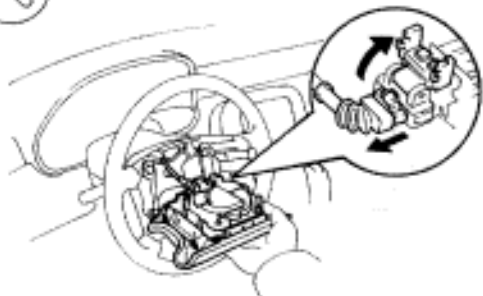
## INSPECTION PROCEDURE

1

### Preparation.



LOCK

AB0117  
AB0340

P

- (1) Disconnect battery negative (–) terminal cable, and wait at least 20 seconds.
- (2) Remove steering wheel pad (See page AB-16).

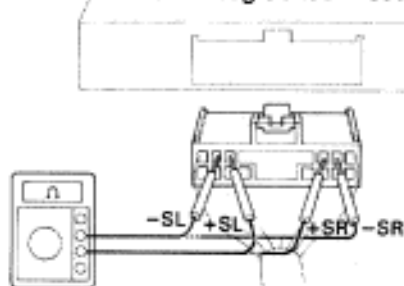
Caution

When storing steering wheel pad, keep upper surface of the pad facing upward.

2

### Check front airbag sensor circuit. (Measure resistance between terminals +SR and –SR, +SL and –SL of center airbag sensor assembly connector.)

Center Airbag Sensor Assembly



AB0032

P

Disconnect center airbag sensor assembly connector.

C

Measure resistance between terminals +SR and –SR, +SL and –SL of harness side connector of center airbag sensor assembly.

OK

Resistance: 755  $\Omega$  – 855  $\Omega$

OK

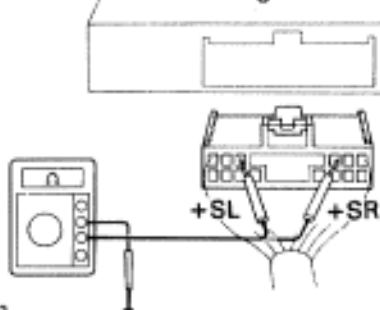
NG

Go to step [ 7 ].

3

### Check front airbag sensor circuit. (Measure resistance between terminals +SR and +SL of center airbag sensor assembly connector and body ground.)

Center Airbag Sensor Assembly



AB0033

C

Measure resistance between terminals +SR, +SL of harness side connector of center airbag sensor assembly and body ground.

OK

Resistance: 1 M  $\Omega$  or higher

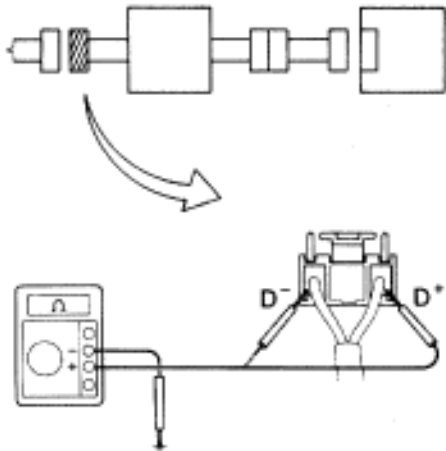
OK

NG

Repair or replace harness or connector between center airbag sensor assembly and front airbag sensor (See page AB-20).

**4****Check squib circuit.**

Steering Wheel Pad (Squib)    Spiral Cable    Center Airbag Sensor Assembly

AB0072  
AB0070

**C** Measure resistance between D<sup>+</sup>, D<sup>-</sup> on spiral cable side of connector between spiral cable and steering wheel pad and body ground.

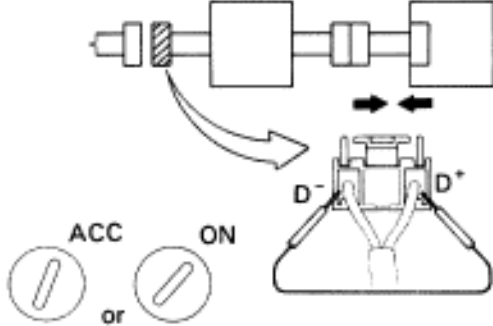
**OK** Resistance: 1 M  $\Omega$  or higher

**OK**

**NG** Go to step [ 8 ].

**5****Check center airbag sensor assembly.**

Steering Wheel Pad (Squib)    Spiral Cable    Center Airbag Sensor Assembly

ACC    ON  
or

Code 11

AB0074  
AB0069  
AB0118 AB0119  
S-17-1 AB0057

- P**
- (1) Connect connector to center airbag sensor assembly.
  - (2) Using a service wire, connect D<sup>+</sup>, D<sup>-</sup> on spiral cable side of connector between spiral cable and steering wheel pad.
  - (3) Connect negative (–) terminal cable to battery, and wait at least 2 seconds.

- C**
- (1) Turn ignition switch ACC or ON and wait at least 20 seconds.
  - (2) Using SST, connect terminals Tc and E<sub>1</sub> of TDCL.  
SST 09843–18020
  - (3) Check diagnostic code.

**OK** Diagnostic code 11 is not output.

**Hint** Codes other than code 11 may be output at this time, but this is not relevant.

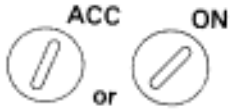
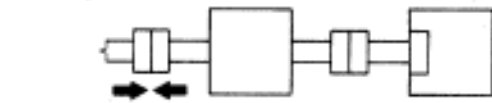
**OK**

**NG** Replace center airbag sensor assembly.

## 6

## Check squib.

Steering Wheel Pad (Squib)      Spiral Cable      Center Airbag Sensor Assembly



Code 11

AB0075  
AB0118 AB0119  
S-17-1 AB0067

OK

- P**
- (1) Turn ignition switch LOCK.
  - (2) Disconnect battery negative (–) terminal cable, and wait at least 20 seconds.
  - (3) Connect steering wheel pad (squib) connector.
  - (4) Connect negative (–) terminal cable to battery, and wait at least 2 seconds.

- C**
- (1) Turn ignition switch ACC or ON, and wait at least 20 seconds.
  - (2) Using SST, connect terminals Tc and E<sub>1</sub> of TDCL.  
SST 09843–18020
  - (3) Check diagnostic code.

**OK** Diagnostic code 11 is not output.

**Hint** Codes other than code 11 may be output at this time, but this is not relevant.

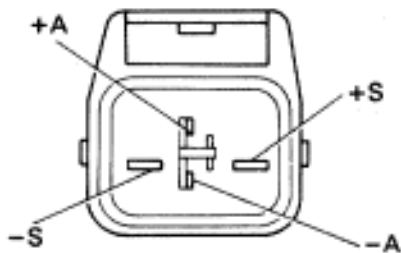
NG

Replace steering wheel pad.

From the results of the above inspection, the malfunctioning part can now be considered normal. To make sure of this, use the simulation method to check.

## 7

## Check front airbag sensor.



AB0034

OK

- P** Disconnect front airbag sensor connector.

- C** Measure resistance between each terminal of front airbag sensor.

OK

Terminal	Resistance
+S – +A	755 Ω – 885 Ω
+S – –S	1 MΩ or higher
–S – –A	Below 1 Ω

Notice

- Do not touch ohmmeter probes strongly against terminals of front airbag sensor.
- Make sure the front airbag sensor connector is properly connected.

NG

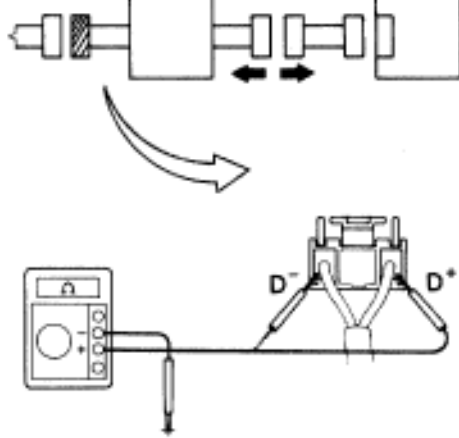
Replace front airbag sensor.

Repair or replace harness or connector between center airbag sensor assembly and front airbag sensor (See page [AB-20](#)).

## 8

## Check squib circuit.

Steering Wheel Pad (Squib)    Spiral Cable    Center Airbag Sensor Assembly



AB0071  
AB0070

OK

**P** Disconnect connector between center airbag sensor assembly and spiral cable.

**C** Measure resistance between D+, D– on spiral cable side of connector between spiral cable and steering wheel pad and body ground.

**OK** Resistance: 1 M  $\Omega$  or higher

NG

Repair or replace spiral cable.

Repair or replace harness or connector between center airbag sensor assembly and spiral cable,