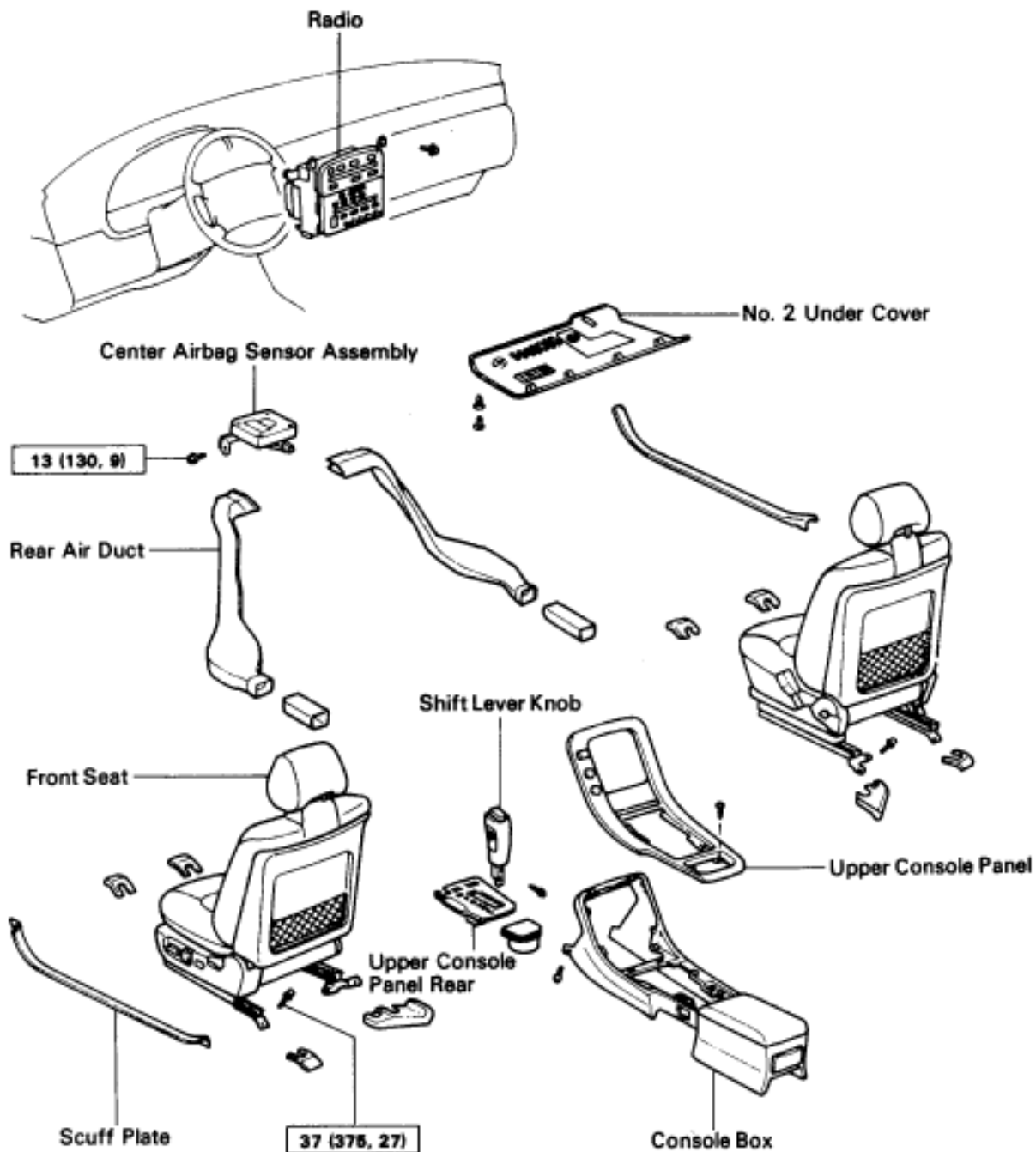


## Center Airbag Sensor Assembly

Remove and install the parts as shown.



N·m (kgf·cm, ft·lbf) : Specified torque

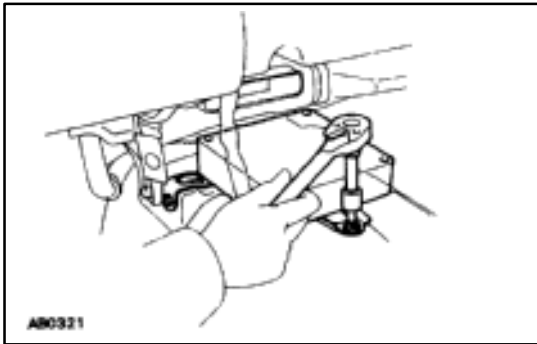
## (MAIN POINTS OF REMOVAL AND INSTALLATION)

**CAUTION:** Work must be started after approx. 20 seconds or longer from the time the ignition switch is turned to the LOCK position and the negative (–) terminal cable is disconnected from the battery (See page AB-2).

**NOTICE:**

- Do not open the cover or the case of the ECU and various computers unless absolutely necessary. (If the IC terminals are touched, the IC may be destroyed by static electricity.)
- Never use airbag parts from another vehicle. When replacing parts, replace with new parts.
- Never reuse the center airbag sensor assembly involved in a collision when the airbag has deployed.
- Never repair a sensor in order to reuse it.

## REMOVE AND INSTALL CENTER AIRBAG SENSOR ASSEMBLY



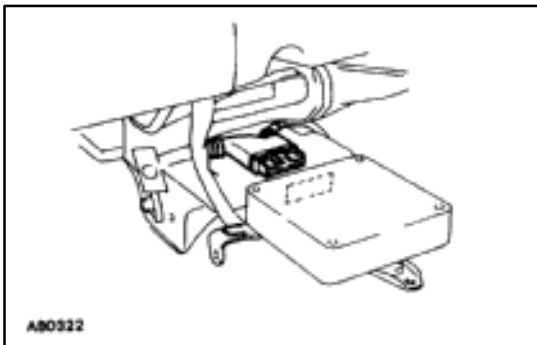
- (a) Using a torx wrench, loosen and tighten the three screws.

Torx wrench: T40 (Part No. 09042-00020 or locally manufactured tool)

Torque: 13 N·m (130 kgf·cm, 9 ft·lbf)

**NOTICE:**

- Make sure the sensor assembly is installed to the specified torque.
- If the sensor assembly has been dropped, or there are cracks, dents or other defects in the case, bracket or connector, replace the sensor assembly with a new one.
- When installing the sensor assembly, take care that the airbag wiring does not interfere with other parts and is not pinched between other parts.
- After installation, shake the sensor assembly to check that there is no looseness.



- (b) Disconnect the connector.