

ECM Power Source Circuit

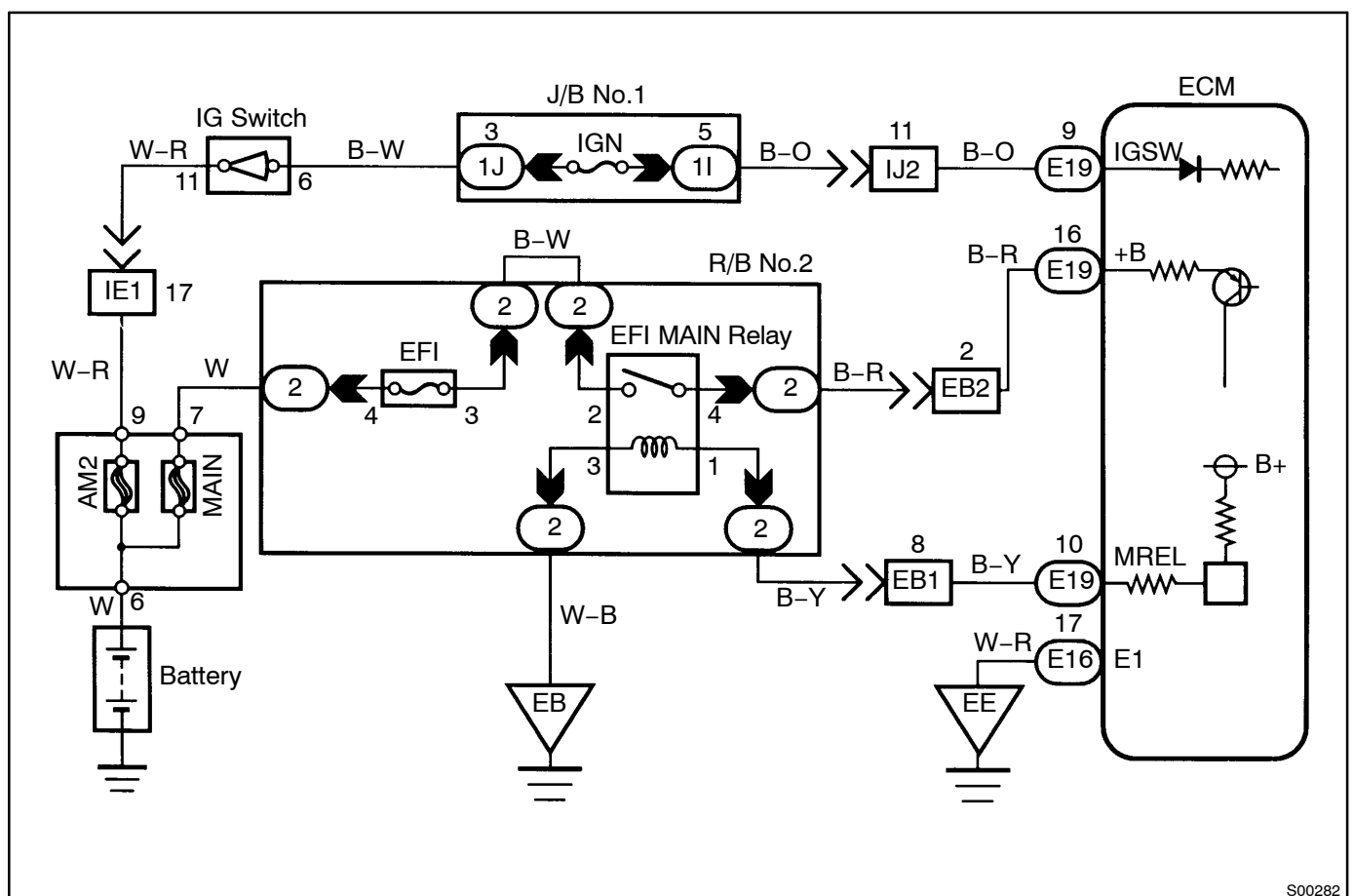
CIRCUIT DESCRIPTION

When the ignition switch is turned ON, battery positive voltage is applied to the terminal IGSW of the ECM and the EFI main relay (Making: EFI) control circuit in the ECM sends a signal to the terminal MREL of the ECM switching on the EFI main relay.

This signal causes current to flow to the coil, closing the contacts of the EFI main relay and supplying power to the terminals +B of the ECM.

If the ignition switch is turned off, the ECM continues to switch on the EFI main relay for a maximum of 2 seconds for the initial setting of the IAC valve.

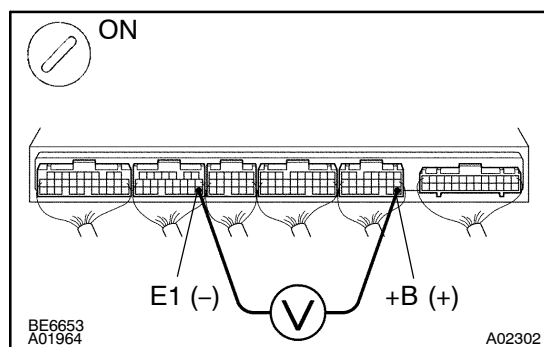
WIRING DIAGRAM



S00282

INSPECTION PROCEDURE

1 Check voltage between terminals + B and E1 of ECM connector.

**PREPARATION:**

- (a) Remove the instrument panel under cover.
- (b) Turn the ignition switch ON.

CHECK:

Measure voltage between terminals +B and E1 of the ECM connector.

OK:

Voltage: 9 ~ 14 V

OK

Proceed to next circuit inspection shown on Problem symptoms table (See page [DI-161](#)).

NG

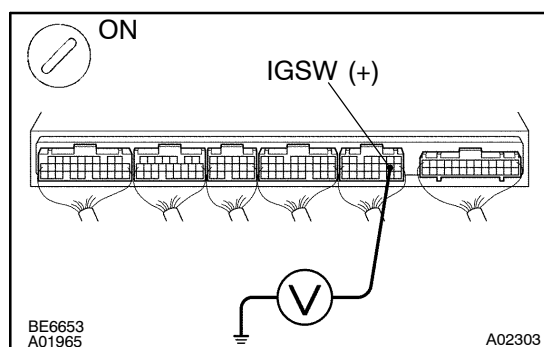
2 Check for open in harness and connector between terminal E1 of ECM and body ground (See page [IN-29](#)).

NG

Repair or replace harness or connector.

OK

3 Check voltage between terminal IGSW of ECM connector and body ground.

**PREPARATION:**

Turn the ignition switch ON.

CHECK:

Measure voltage between terminal IGSW of the ECM and body ground.

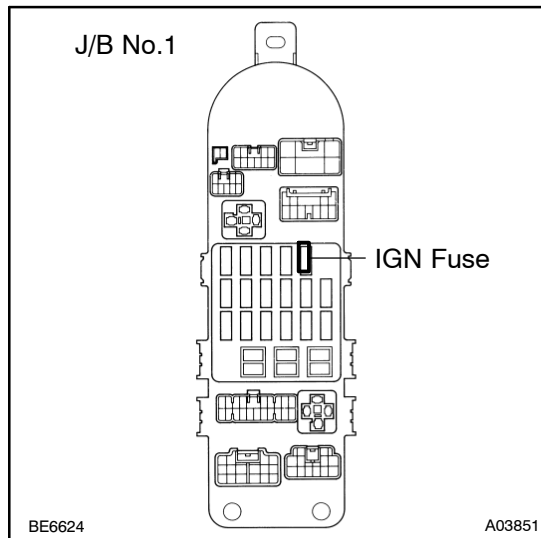
OK:

Voltage: 9 ~ 14 V

OK

Go to step 6.

NG

4 Check IGN fuse of J/B No.1.**PREPARATION:**

Remove the IGN fuse from the J/B No.1.

CHECK:

Check continuity of the IGN fuse.

OK:

Continuity

NG

Check for short in all harness and components connected to IGN fuse.

OK

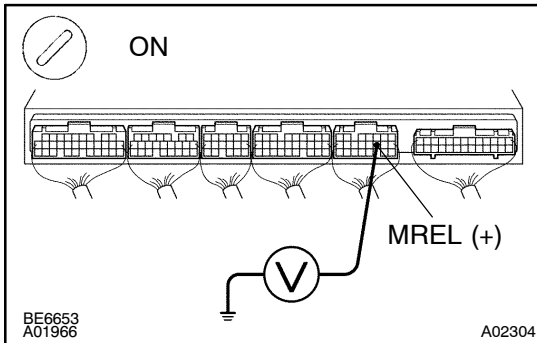
5 Check ignition switch (See page [BE-22](#)).

NG

Replace ignition switch.

OK

Check and repair harness and connector between battery and ignition switch, ignition switch and ECM (See page [IN-29](#)).

6 Check voltage between terminal MREL of ECM connector and body ground.**PREPARATION:**

Turn the ignition switch ON.

CHECK:

Measure voltage between terminal MREL of the ECM connector and body ground.

OK:

Voltage: 9 ~ 14 V

NG

Check and replace ECM (See page [IN-29](#)).

OK

7 Check EFI fuse of R/B No.2 (See page [DI-308](#)).

NG

Check for short in all harness and components connected to EFI fuse.

OK

8 Check EFI main relay (Marking: EFI) (See page [SF-63](#)).

NG

Replace EFI main relay (Marking: EFI).

OK

9 Check for open and short in harness and connector between terminal MREL of ECM and body ground (See page [IN-29](#)).

NG

Repair and replace harness or connector.

OK

Check and repair harness or connector between EFI fuse and battery.