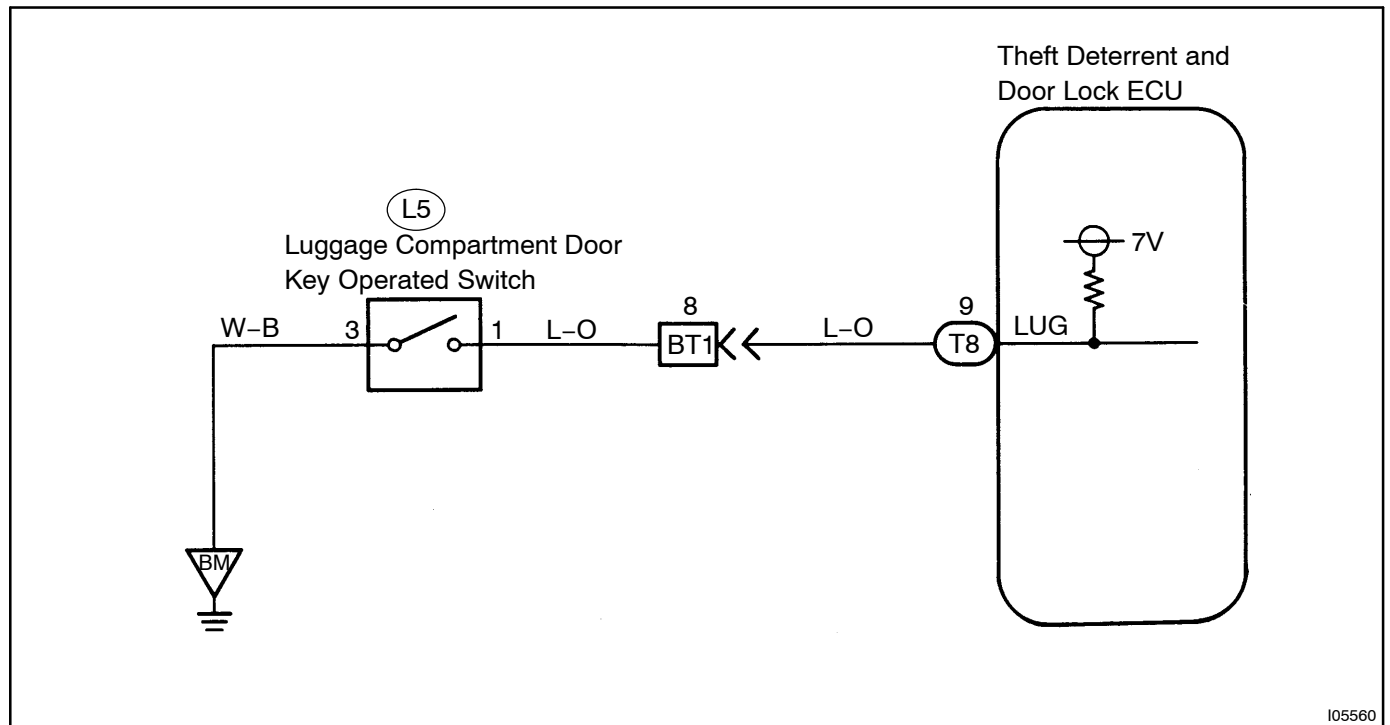


Luggage Compartment Door Key Operated Switch Circuit

CIRCUIT DESCRIPTION

The luggage compartment door key operated switch goes on when the luggage compartment door key cylinder is turned to the unlock side with the key.

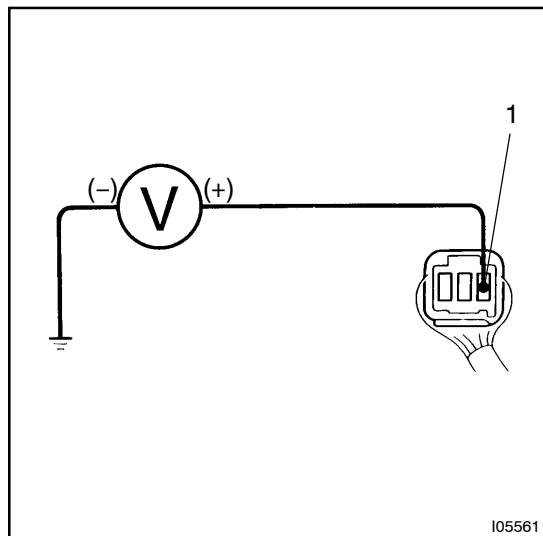
WIRING DIAGRAM



105560

INSPECTION PROCEDURE

- 1 Check voltage between terminal 1 of luggage compartment door key operated switch connector and body ground.**

**PREPARATION:**

- (a) Remove luggage compartment door trim.
(b) Turn ignition switch on.

CHECK:

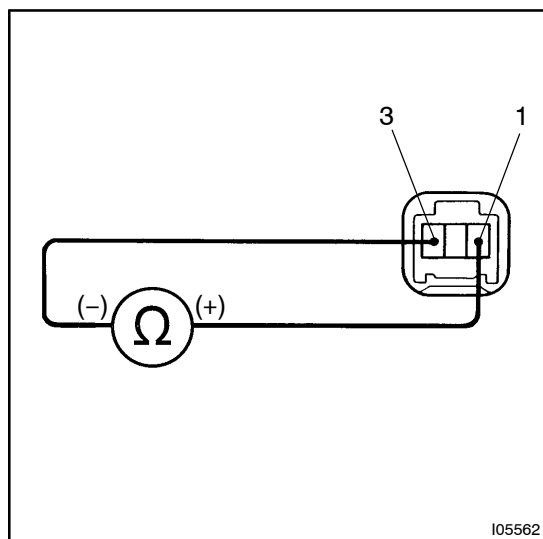
Measure voltage between terminal 1 of luggage compartment door key operated switch connector and body ground, when the key is turned to the unlock side and not turned.

OK:

Key operation	Voltage
Turned to the unlock side	Below 1 V
Not turned	10 – 14 V

OK**Check and replace ECU.****NG**

- 2 Check luggage compartment door key operated switch.**

**PREPARATION:**

Disconnect luggage compartment door key operated switch connector.

CHECK:

Check continuity between terminals 1 and 3, when the key is turned to the unlock side and not turned.

OK:

Key operation	Terminal No. to continuity
Turned to the unlock side	1 – 3
Not turned	

NG**Repair or replace luggage compartment door key operated switch.**

OK

3	Check harness and connector between ECU and key operated switch, key operated switch and body ground (See page IN-29).
---	---

NG

Repair or replace harness or connector.

OK

Check and replace ECU.